

For Research Use Only

# PDE2A Polyclonal antibody

Catalog Number: 55306-1-AP

Featured Product

11 Publications



## Basic Information

### Catalog Number:

55306-1-AP

### Size:

150ul, Concentration: 550 ug/ml by Nanodrop and 467 ug/ml by Bradford method using BSA as the standard;

### Source:

Rabbit

### Isotype:

IgG

### GenBank Accession Number:

NM\_002599

### GeneID (NCBI):

5138

### UNIPROT ID:

O00408

### Full Name:

phosphodiesterase 2A, cGMP-stimulated

### Calculated MW:

106 kDa

### Observed MW:

100-106 kDa

### Purification Method:

Antigen affinity purification

### Recommended Dilutions:

WB 1:500-1:2000

IP 0.5-4.0 ug for 1.0-3.0 mg of total protein lysate

IHC 1:20-1:200

## Applications

### Tested Applications:

WB, IP, IHC, ELISA

### Cited Applications:

WB, IHC, IF

### Species Specificity:

human, mouse, rat

### Cited Species:

human, mouse, rat

**Note-IHC: suggested antigen retrieval with TE buffer pH 9.0; (\*) Alternatively, antigen retrieval may be performed with citrate buffer pH 6.0**

### Positive Controls:

WB : mouse brain tissue, mouse heart tissue

IP : mouse brain tissue,

IHC : human kidney tissue, human liver cancer tissue

## Background Information

PDE2A, also named as cGSPDE and CGS-PDE, belongs to the cyclic nucleotide phosphodiesterase family and PDE2 subfamily. It is a cyclic nucleotide phosphodiesterase with a dual-specificity for the second messengers cAMP and cGMP, which are key regulators of many important physiological processes. This antibody is specific to PDE2A.

## Notable Publications

Author	Pubmed ID	Journal	Application
Miguel J Lobo	33087821	Commun Biol	WB, IF
Xiang Gui	36252813	Thromb Haemost	WB
Kun Liu	29720569	JCI Insight	WB

## Storage

### Storage:

Store at -20°C. Stable for one year after shipment.

### Storage Buffer:

PBS with 0.02% sodium azide and 50% glycerol pH 7.3.

Aliquoting is unnecessary for -20°C storage

\*\*\* 20ul sizes contain 0.1% BSA

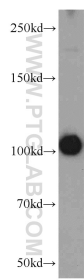
For technical support and original validation data for this product please contact:

T: 1 (888) 4PTGLAB (1-888-478-4522) (toll free in USA), or 1(312) 455-8498 (outside USA)

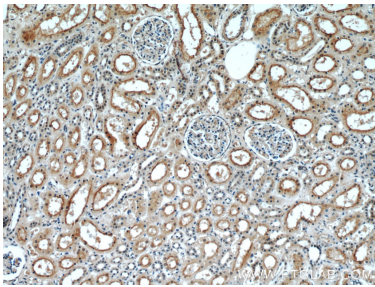
E: [proteintech@ptglab.com](mailto:proteintech@ptglab.com)  
W: [ptglab.com](http://ptglab.com)

This product is exclusively available under Proteintech Group brand and is not available to purchase from any other manufacturer.

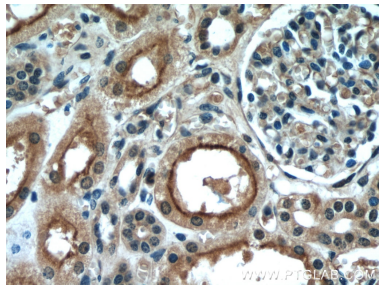
Selected Validation Data



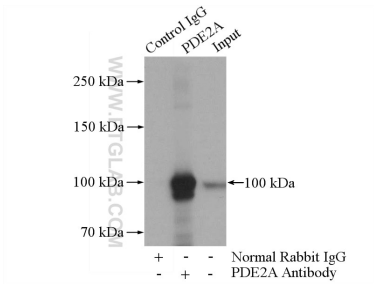
mouse brain tissue were subjected to SDS PAGE followed by western blot with 55306-1-AP (PDE2A antibody) at dilution of 1:1000 incubated at room temperature for 1.5 hours.



Immunohistochemical analysis of paraffin-embedded human kidney using 55306-1-AP (PDE2A antibody) at dilution of 1:50 (under 10x lens).



Immunohistochemical analysis of paraffin-embedded human kidney using 55306-1-AP (PDE2A antibody) at dilution of 1:50 (under 40x lens).



IP result of anti-PDE2A (IP:55306-1-AP, 4ug; Detection:55306-1-AP 1:500) with mouse brain tissue lysate 3440ug.