

For Research Use Only

PAMR1 Polyclonal antibody

Catalog Number: 55310-1-AP

3 Publications



Basic Information

Catalog Number:

55310-1-AP

Size:

150ul, Concentration: 400 ug/ml by Nanodrop and 240 ug/ml by Bradford method using BSA as the standard;

Source:

Rabbit

Isotype:

IgG

GenBank Accession Number:

NM_015430

GeneID (NCBI):

25891

UNIPROT ID:

Q6UXH9

Full Name:

regeneration associated muscle protease

Calculated MW:

82 kDa

Observed MW:

78-82 kDa, 67-70 kDa

Purification Method:

Antigen affinity purification

Recommended Dilutions:

WB 1:500-1:1000

IHC 1:20-1:200

Applications

Tested Applications:

WB, IHC, ELISA

Cited Applications:

WB, IHC

Species Specificity:

human, mouse, rat

Cited Species:

human, mouse

Positive Controls:

WB : mouse skeletal muscle tissue,

IHC : human skeletal muscle tissue,

Note-IHC: suggested antigen retrieval with TE buffer pH 9.0; (*) Alternatively, antigen retrieval may be performed with citrate buffer pH 6.0

Background Information

PAMR1, also named as RAMP, belongs to the peptidase S1 family. It may play a role in regeneration of skeletal muscle. This antibody is specific to PAMR1.

Notable Publications

| Author | Pubmed ID | Journal | Application |
|-------------------|-----------|------------------|-------------|
| Mark S Cembrowski | 30375971 | Elife | IHC |
| Rui Yang | 34671559 | Front Oncol | WB, IHC |
| Rui Hu | 38823657 | J Ethnopharmacol | WB |

Storage

Storage:

Store at -20°C.

Storage Buffer:

PBS with 0.02% sodium azide and 50% glycerol pH 7.3.

Aliquoting is unnecessary for -20°C storage

*** 20ul sizes contain 0.1% BSA

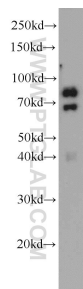
For technical support and original validation data for this product please contact:

T: 1 (888) 4PTGLAB (1-888-478-4522) (toll free in USA), or 1(312) 455-8498 (outside USA)

E: proteintech@ptglab.com
W: ptglab.com

This product is exclusively available under Proteintech Group brand and is not available to purchase from any other manufacturer.

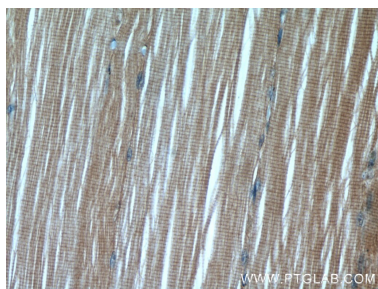
Selected Validation Data



mouse skeletal muscle tissue were subjected to SDS PAGE followed by western blot with 55310-1-AP (PAMR1 antibody) at dilution of 1:500 incubated at room temperature for 1.5 hours.



Immunohistochemical analysis of paraffin-embedded human skeletal muscle using 55310-1-AP (PAMR1 antibody) at dilution of 1:50 (under 10x lens).



Immunohistochemical analysis of paraffin-embedded human skeletal muscle using 55310-1-AP (PAMR1 antibody) at dilution of 1:50 (under 40x lens).