

For Research Use Only

SIDT1 Polyclonal antibody

Catalog Number: 55352-1-AP

1 Publications



Basic Information

Catalog Number:

55352-1-AP

Size:

150ul, Concentration: 1000 ug/ml by Nanodrop and 400 ug/ml by Bradford method using BSA as the standard;

Source:

Rabbit

Isotype:

IgG

GenBank Accession Number:

NM_017699

GeneID (NCBI):

54847

UNIPROT ID:

Q9NXL6

Full Name:

SID1 transmembrane family, member 1

Calculated MW:

94 kDa

Observed MW:

95-110 kDa

Purification Method:

Antigen affinity purification

Recommended Dilutions:

WB 1:1000-1:4000

IHC 1:50-1:500

IF/ICC 1:50-1:500

Applications

Tested Applications:

WB, IHC, IF/ICC, ELISA

Cited Applications:

WB, IHC

Species Specificity:

human, mouse

Cited Species:

human

Positive Controls:

WB: COLO 320 cells, HEK-293T cells, Jurkat cells, mouse colon tissue

IHC: human breast cancer tissue,

IF/ICC: HepG2 cells,

Note-IHC: suggested antigen retrieval with TE buffer pH 9.0; (*) Alternatively, antigen retrieval may be performed with citrate buffer pH 6.0

Background Information

SIDT1, also known as a human orthologue of SID-1, belongs to the SID family which is a highly conserved group of transmembrane channel-like proteins. As a transmembrane channel for intercellular communication, SIDT1 was found to facilitate small interfering RNA (siRNA) or miRNA uptake and also involved in cholesterol transport in human systems. SIDT1 mRNA and protein were mainly detected in the stomach and large intestine (including the cecum, colon and rectum) but not in the small intestine (especially the duodenum). Notably, SIDT1 was mainly located in gastric surface mucous cells (pit cells) but barely expressed in the parietal or chief cells. The SIDT1 gene encodes an 827 amino acid protein with a calculated molecular mass of 94 kDa. (PMID: 31632087, PMID: 32801357, PMID: 22174421)

Notable Publications

Author	Pubmed ID	Journal	Application
Ya Wang	31632087	Onco Targets Ther	WB,IHC

Storage

Storage:

Store at -20°C. Stable for one year after shipment.

Storage Buffer:

PBS with 0.02% sodium azide and 50% glycerol pH 7.3.

Aliquoting is unnecessary for -20°C storage

*** 20ul sizes contain 0.1% BSA

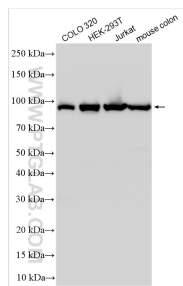
For technical support and original validation data for this product please contact:

T: 1 (888) 4PTGLAB (1-888-478-4522) (toll free in USA), or 1(312) 455-8498 (outside USA)

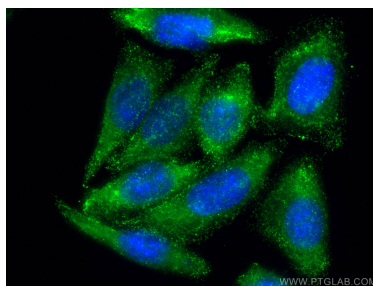
E: proteintech@ptglab.com
W: ptglab.com

This product is exclusively available under Proteintech Group brand and is not available to purchase from any other manufacturer.

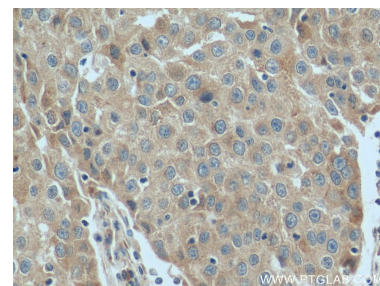
Selected Validation Data



Various lysates were subjected to SDS PAGE followed by western blot with 55352-1-AP (SIDT1 antibody) at dilution of 1:2000 incubated at room temperature for 1.5 hours.



Immunofluorescent analysis of (-20°C Methanol) fixed HepG2 cells using SIDT1 antibody (55352-1-AP) at dilution of 1:200 and CoraLite® 488-Conjugated AffiniPure Goat Anti-Rabbit IgG(H+L).



Immunohistochemical analysis of paraffin-embedded human breast cancer tissue slide using 55352-1-AP (SIDT1 antibody) at dilution of 1:200 (under 40x lens). Heat mediated antigen retrieval with Tris-EDTA buffer (pH 9.0).