

For Research Use Only

KLHL9 Polyclonal antibody

Catalog Number: 55394-1-AP



Basic Information

Catalog Number:

55394-1-AP

Size:

150ul , Concentration: 1000 ug/ml by Nanodrop and 360 ug/ml by Bradford method using BSA as the standard;

Source:

Rabbit

Isotype:

IgG

GenBank Accession Number:

NM_018847

GeneID (NCBI):

55958

UNIPROT ID:

Q9P2J3

Full Name:

kelch-like 9 (Drosophila)

Calculated MW:

69 kDa

Observed MW:

80 kDa

Purification Method:

Antigen affinity purification

Recommended Dilutions:

WB 1:200-1:1000

Applications

Tested Applications:

WB, ELISA

Species Specificity:

human

Positive Controls:

WB : HeLa cells,

Storage

Storage:

Store at -20°C.

Storage Buffer:

PBS with 0.02% sodium azide and 50% glycerol pH 7.3.

Aliquoting is unnecessary for -20°C storage

*** 20ul sizes contain 0.1% BSA

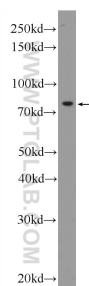
For technical support and original validation data for this product please contact:

T: 1 (888) 4PTGLAB (1-888-478-4522) (toll free in USA), or 1(312) 455-8498 (outside USA)

E: proteintech@ptglab.com
W: ptglab.com

This product is exclusively available under Proteintech Group brand and is not available to purchase from any other manufacturer.

Selected Validation Data



HeLa cells were subjected to SDS PAGE followed by western blot with 55394-1-AP (KLHL9 Antibody) at dilution of 1:300 incubated at room temperature for 1.5 hours.