

For Research Use Only

FAM13A Polyclonal antibody

Catalog Number: 55401-1-AP

Featured Product

7 Publications



Basic Information

Catalog Number:

55401-1-AP

Size:

150ul, Concentration: 1000 ug/ml by Nanodrop and 320 ug/ml by Bradford method using BSA as the standard;

Source:

Rabbit

Isotype:

IgG

GenBank Accession Number:

NM_014883

GeneID (NCBI):

10144

UNIPROT ID:

O94988

Full Name:

family with sequence similarity 13, member A

Calculated MW:

117 kDa

Observed MW:

65 kDa

Purification Method:

Antigen affinity purification

Recommended Dilutions:

WB 1:500-1:1000

IHC 1:20-1:200

IF/ICC 1:10-1:100

Applications

Tested Applications:

WB, IHC, IF/ICC, ELISA

Cited Applications:

WB, IHC, IF

Species Specificity:

human, mouse

Cited Species:

human, mouse

Note-IHC: suggested antigen retrieval with TE buffer pH 9.0; (*) Alternatively, antigen retrieval may be performed with citrate buffer pH 6.0

Positive Controls:

WB: mouse kidney tissue, mouse lung tissue, mouse ovary tissue, mouse pancreas tissue

IHC: human skeletal muscle tissue, human tonsil tissue

IF/ICC: HeLa cells,

Background Information

FAM13A, also named as FAM13A1 and KIAA0914, belongs to the FAM13 family. It is associated with chronic obstructive pulmonary disease.(PMID: 20173748) This antibody is specific to FAM13A. It can recognize all the isoforms of FAM13A.

Notable Publications

Author	Pubmed ID	Journal	Application
Rongpeng Li	26371245	J Immunol	WB
Enbo Wang	34821370	Mol Med Rep	WB
Qing Chen	34163376	Front Physiol	WB, IHC

Storage

Storage:

Store at -20°C. Stable for one year after shipment.

Storage Buffer:

PBS with 0.02% sodium azide and 50% glycerol pH 7.3.

Aliquoting is unnecessary for -20°C storage

*** 20ul sizes contain 0.1% BSA

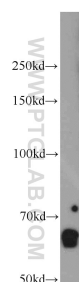
For technical support and original validation data for this product please contact:

T: 1 (888) 4PTGLAB (1-888-478-4522) (toll free in USA), or 1(312) 455-8498 (outside USA)

E: proteintech@ptglab.com
W: ptglab.com

This product is exclusively available under Proteintech Group brand and is not available to purchase from any other manufacturer.

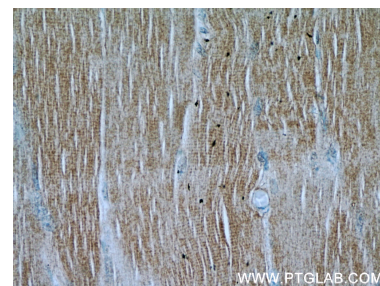
Selected Validation Data



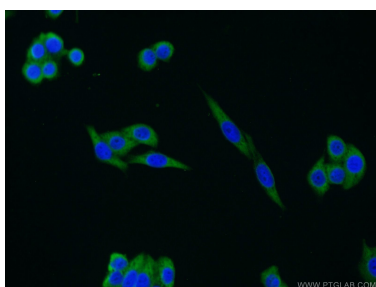
mouse kidney tissue were subjected to SDS PAGE followed by western blot with 55401-1-AP (FAM13A antibody) at dilution of 1:500 incubated at room temperature for 1.5 hours.



Immunohistochemical analysis of paraffin-embedded human skeletal muscle using 55401-1-AP (FAM13A antibody) at dilution of 1:50 (under 10x lens).



Immunohistochemical analysis of paraffin-embedded human skeletal muscle using 55401-1-AP (FAM13A antibody) at dilution of 1:50 (under 40x lens).



Immunofluorescent analysis of HeLa cells using 55401-1-AP (FAM13A antibody) at dilution of 1:25 and Alexa Fluor 488-conjugated Goat Anti-Rabbit IgG(H+L).