

For Research Use Only

KIF15 Polyclonal antibody

Catalog Number: 55407-1-AP

Featured Product

28 Publications



Basic Information

Catalog Number:

55407-1-AP

Size:

150ul, Concentration: 900 ug/ml by Nanodrop;

Source:

Rabbit

Isotype:

IgG

GenBank Accession Number:

NM_020242

GeneID (NCBI):

56992

UNIPROT ID:

Q9NS87

Full Name:

kinesin family member 15

Calculated MW:

160 kDa

Observed MW:

150-165 kDa

Purification Method:

Antigen affinity purification

Recommended Dilutions:

WB 1:2000-1:10000

IP 0.5-4.0 ug for 1.0-3.0 mg of total protein lysate

IHC 1:20-1:200

Applications

Tested Applications:

WB, IHC, FC (Intra), IP, ELISA

Cited Applications:

WB, IHC, IF

Species Specificity:

human, mouse

Cited Species:

human, mouse, rat, zebrafish

Note-IHC: suggested antigen retrieval with TE buffer pH 9.0; (*) Alternatively, antigen retrieval may be performed with citrate buffer pH 6.0

Positive Controls:

WB: Jurkat cells, mouse thymus tissue, HEK-293 cells, MDA-MB-453s cells

IP: mouse thymus tissue,

IHC: human testis tissue,

FC (Intra): HEK-293 cells,

Background Information

KIF15, also named as KLP2 and KNSL7, belongs to the kinesin-like protein family and KLP2 subfamily. It is a plus-end directed kinesin-like motor enzyme which involved in mitotic spindle assembly. Several isoforms of KIF15 exist due to the alternative splicing, with molecular weight between 130-160 kDa. Sometimes higher molecular weight around 200 kDa can also be observed, which may be a modified variant of KIF15. (14618103)

Notable Publications

Author	Pubmed ID	Journal	Application
Yanchao Ma	33011740	Cell Death Dis	IHC, WB, IF
Yuan Qiao	30439711	Cell Physiol Biochem	WB, IHC
Lin Gao	34804913	Front Oncol	WB, IHC

Storage

Storage:

Store at -20°C. Stable for one year after shipment.

Storage Buffer:

PBS with 0.02% sodium azide and 50% glycerol, pH7.3

Aliquoting is unnecessary for -20°C storage

*** 20ul sizes contain 0.1% BSA

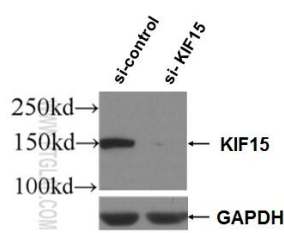
For technical support and original validation data for this product please contact:

T: 1 (888) 4PTGLAB (1-888-478-4522) (toll free in USA), or 1(312) 455-8498 (outside USA)

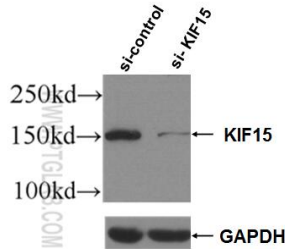
E: proteintech@ptglab.com
W: ptglab.com

This product is exclusively available under Proteintech Group brand and is not available to purchase from any other manufacturer.

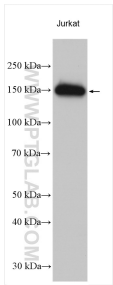
Selected Validation Data



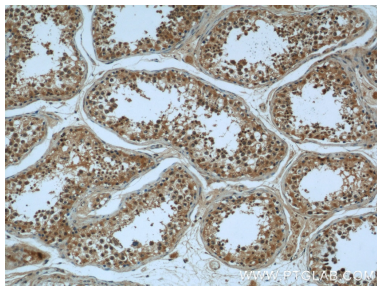
WB result of KIF15 antibody (55407-1-AP; 1:3000; incubated at room temperature for 1.5 hours) with sh-Control and sh-KIF15 transfected HEK-293 cells.



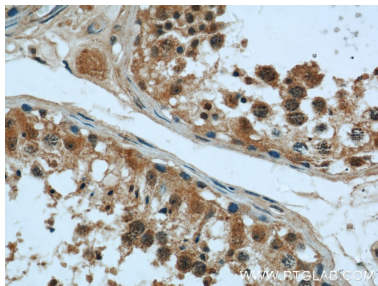
WB result of KIF15 antibody (55407-1-AP; 1:3000; incubated at room temperature for 1.5 hours) with sh-Control and sh-KIF15 transfected Jurkat cells.



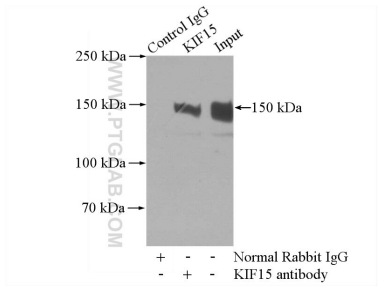
Jurkat cells were subjected to SDS PAGE followed by western blot with 55407-1-AP (KIF15 antibody) at dilution of 1:5000 incubated at room temperature for 1.5 hours.



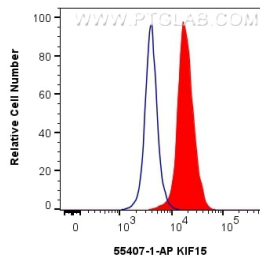
Immunohistochemical analysis of paraffin-embedded human testis using 55407-1-AP (KIF15 antibody) at dilution of 1:50 (under 10x lens).



Immunohistochemical analysis of paraffin-embedded human testis using 55407-1-AP (KIF15 antibody) at dilution of 1:50 (under 40x lens).



IP result of anti-KIF15 (IP:55407-1-AP, 4ug; Detection:55407-1-AP 1:500) with mouse thymus tissue lysate 2800ug.



1x10⁶ HEK-293 cells were intracellularly stained with 0.4 ug KIF15 Polyclonal antibody (55407-1-AP) and CoraLite®488-Conjugated AffiniPure Goat Anti-Rabbit IgG(H+L) (SA00013-2)(red), or 0.4 ug Rabbit IgG control Rabbit PolyAb (30000-O-AP) (blue). Cells were fixed with 4% PFA and permeabilized with Flow Cytometry Perm Buffer (PF00011-C).