

For Research Use Only

Loricrin Polyclonal antibody

Catalog Number: 55439-1-AP

27 Publications



Basic Information

Catalog Number:

55439-1-AP

Size:

150ul, Concentration: 800 ug/ml by Nanodrop;

Source:

Rabbit

Isotype:

IgG

GenBank Accession Number:

NM_000427

GeneID (NCBI):

4014

UNIPROT ID:

P23490

Full Name:

Loricrin

Calculated MW:

26 kDa

Observed MW:

26 kDa

Purification Method:

Antigen affinity purification

Recommended Dilutions:

WB 1:500-1:3000

IHC 1:200-1:800

IF/ICC 1:50-1:500

Applications

Tested Applications:

WB, IHC, IF/ICC, ELISA

Cited Applications:

WB, IHC, IF

Species Specificity:

human, mouse, rat

Cited Species:

human, mouse, rat

Note-IHC: suggested antigen retrieval with TE buffer pH 9.0; (*) Alternatively, antigen retrieval may be performed with citrate buffer pH 6.0

Positive Controls:

WB : A431 cells,

IHC : rat skin tissue, human paracancerous, human paracancerous tissue of skin, mouse skin tissue

IF/ICC : A431 cells,

Background Information

Loricrin, also named LOR and LRN, is a major component of the cornified cell envelope (CE) expressed late in epidermal differentiation in the granular layers of normal skin. This antibody is specific to Loricrin.

Notable Publications

Author	Pubmed ID	Journal	Application
Yushi Katsuyama	36047208	Biol Pharm Bull	WB
Miao Yu	36293320	Int J Mol Sci	IF
Jie Zhang	34646892	Burns Trauma	WB,IHC

Storage

Storage:

Store at -20°C. Stable for one year after shipment.

Storage Buffer:

PBS with 0.02% sodium azide and 50% glycerol pH 7.3.

Aliquoting is unnecessary for -20°C storage

*** 20ul sizes contain 0.1% BSA

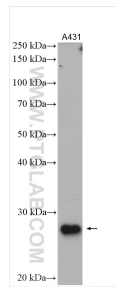
For technical support and original validation data for this product please contact:

T: 1 (888) 4PTGLAB (1-888-478-4522) (toll free in USA), or 1(312) 455-8498 (outside USA)

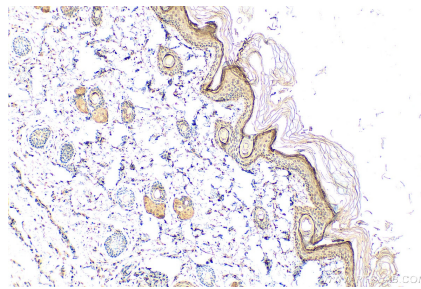
E: proteintech@ptglab.com
W: ptglab.com

This product is exclusively available under Proteintech Group brand and is not available to purchase from any other manufacturer.

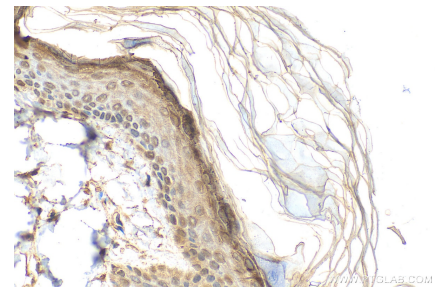
Selected Validation Data



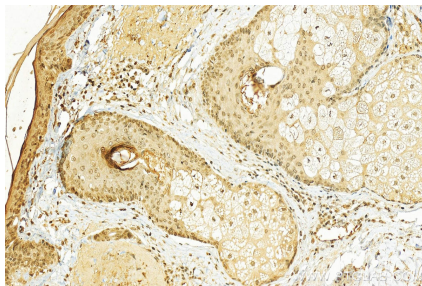
A431 cells were subjected to SDS PAGE followed by western blot with 55439-1-AP (Loricrin antibody) at dilution of 1:1500 incubated at room temperature for 1.5 hours.



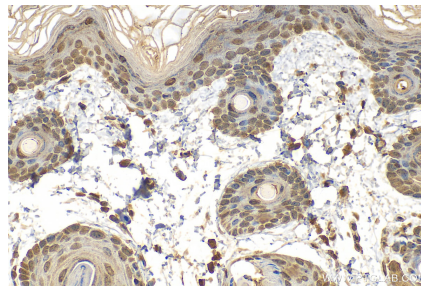
Immunohistochemical analysis of paraffin-embedded rat skin tissue slide using 55439-1-AP (Loricrin antibody) at dilution of 1:400 (under 10x lens). Heat mediated antigen retrieval with Tris-EDTA buffer (pH 9.0).



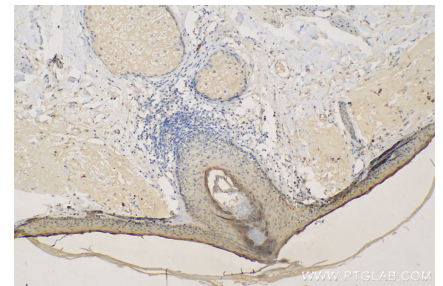
Immunohistochemical analysis of paraffin-embedded rat skin tissue slide using 55439-1-AP (Loricrin antibody) at dilution of 1:400 (under 40x lens). Heat mediated antigen retrieval with Tris-EDTA buffer (pH 9.0).



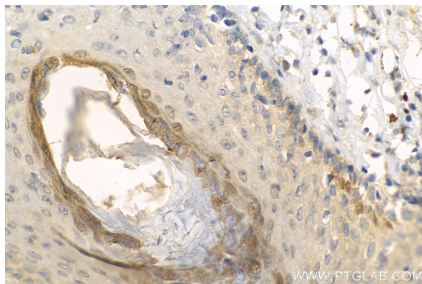
Immunohistochemical analysis of paraffin-embedded paracancerous slide using 55439-1-AP (Loricrin antibody) at dilution of 1:200 (under 20x lens). Heat mediated antigen retrieval with Tris-EDTA buffer (pH 9.0).



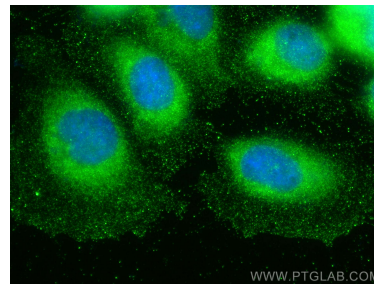
Immunohistochemical analysis of paraffin-embedded mouse skin tissue slide using 55439-1-AP (Loricrin antibody) at dilution of 1:200 (under 40x lens). Heat mediated antigen retrieval with Tris-EDTA buffer (pH 9.0).



Immunohistochemical analysis of paraffin-embedded human paracancerous tissue of skin slide using 55439-1-AP (Loricrin antibody) at dilution of 1:200 (under 10x lens). Heat mediated antigen retrieval with Tris-EDTA buffer (pH 9.0).



Immunohistochemical analysis of paraffin-embedded human paracancerous tissue of skin slide using 55439-1-AP (Loricrin antibody) at dilution of 1:200 (under 40x lens). Heat mediated antigen retrieval with Tris-EDTA buffer (pH 9.0).



Immunofluorescent analysis of (-20°C Methanol) fixed A431 cells using Loricrin antibody (55439-1-AP) at dilution of 1:200 and CoraLite®488-Conjugated AffiniPure Goat Anti-Rabbit IgG(H+L) (SA00013-2).