

For Research Use Only

CXCR1 Polyclonal antibody

Catalog Number: 55450-1-AP

Featured Product

8 Publications



Basic Information

Catalog Number:

55450-1-AP

Size:

150ul, Concentration: 900 ug/ml by Nanodrop and 380 ug/ml by Bradford method using BSA as the standard;

Source:

Rabbit

Isotype:

IgG

GenBank Accession Number:

NM_000634

GeneID (NCBI):

3577

UNIPROT ID:

P25024

Full Name:

interleukin 8 receptor, alpha

Calculated MW:

40 kDa

Observed MW:

50 kDa

Purification Method:

Antigen affinity purification

Recommended Dilutions:

WB 1:200-1:1000

IP 0.5-4.0 ug for 1.0-3.0 mg of total protein lysate

IF/ICC 1:200-1:800

Applications

Tested Applications:

WB, IF/ICC, IP, ELISA

Cited Applications:

WB, IF

Species Specificity:

human

Cited Species:

human, mouse

Positive Controls:

WB : Jurkat cells,

IP : Jurkat cells,

IF/ICC : Jurkat cells,

Background Information

CXCR1, also named CMKAR1, IL8RA, and CD181, belongs to the G-protein coupled receptor 1 family. It is a receptor to interleukin-8, a powerful neutrophil chemotactic factor. The binding of IL-8 to the receptor causes activation of neutrophils. CXCR1 binds to IL-8 with a high affinity and to MGSA (GRO) with a low affinity. This antibody is specific to CXCR1.

Notable Publications

Author	Pubmed ID	Journal	Application
Yuchen Ma	36327908	Mol Immunol	WB
Xiaolei Shi	36217946	J Agric Food Chem	WB
Wei qun Mao	30620384	Cancer	

Storage

Storage:

Store at -20°C. Stable for one year after shipment.

Storage Buffer:

PBS with 0.02% sodium azide and 50% glycerol pH 7.3.

Aliquoting is unnecessary for -20°C storage

*** 20ul sizes contain 0.1% BSA

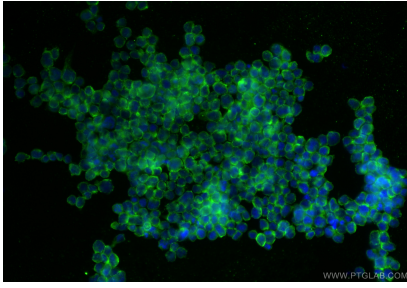
For technical support and original validation data for this product please contact:

T: 1 (888) 4PTGLAB (1-888-478-4522) (toll free in USA), or 1(312) 455-8498 (outside USA)

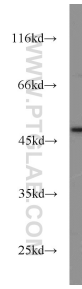
E: proteintech@ptglab.com
W: ptglab.com

This product is exclusively available under Proteintech Group brand and is not available to purchase from any other manufacturer.

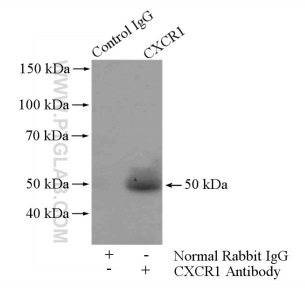
Selected Validation Data



Immunofluorescent analysis of (4% PFA) fixed Jurkat cells using CXCR1 antibody (55450-1-AP) at dilution of 1:400 and CoraLite®488-Conjugated Goat Anti-Rabbit IgG(H+L) (SA00013-2).



Jurkat cells were subjected to SDS PAGE followed by western blot with 55450-1-AP (CXR1 antibody) at dilution of 1:300 incubated at room temperature for 1.5 hours.



IP result of anti-CXR1 (IP:55450-1-AP, 4ug; Detection:55450-1-AP 1:500) with Jurkat cells lysate 4000ug.