

For Research Use Only

# MAML1 Polyclonal antibody

Catalog Number: 55493-1-AP

2 Publications



## Basic Information

Catalog Number:

55493-1-AP

Size:

150ul, Concentration: 1000 ug/ml by Nanodrop and 380 ug/ml by Bradford method using BSA as the standard;

Source:

Rabbit

Isotype:

IgG

GenBank Accession Number:

NM\_014757

GeneID (NCBI):

9794

UNIPROT ID:

Q92585

Full Name:

mastermind-like 1 (Drosophila)

Calculated MW:

108 kDa

Observed MW:

108-120 kDa

Purification Method:

Antigen affinity purification

Recommended Dilutions:

WB: 1:500-1:2000

## Applications

Tested Applications:

WB, ELISA

Cited Applications:

WB, ColP

Species Specificity:

human, mouse, rat

Cited Species:

human

Positive Controls:

WB: HeLa cells, mouse heart tissue, Jurkat cells

## Background Information

MAML1, also named as KIAA0200 and Mam-1, belongs to the mastermind family. It acts as a transcriptional coactivator for NOTCH proteins. MAML1 has been shown to amplify NOTCH-induced transcription of HES1. It enhances phosphorylation and proteolytic turnover of the NOTCH intracellular domain in the nucleus through interaction with CDK8. MAML1 binds to CREBBP/CBP which promotes nucleosome acetylation at NOTCH enhancers and activates transcription. Induces phosphorylation and localization of CREBBP to nuclear foci. It plays a role in hematopoietic development by regulating NOTCH-mediated lymphoid cell fate decisions. This antibody is specific to MAML1. The calculated molecular weight of MAML1 is 108 kDa, but modified MAML1 is about 120 kDa.

## Notable Publications

Author	Pubmed ID	Journal	Application
Yanzhu Shi	35844785	Int J Biol Sci	WB, ColP
Hairong Zhou	40202620	Discov Oncol	WB

## Storage

Storage:

Store at -20°C. Stable for one year after shipment.

Storage Buffer:

PBS with 0.02% sodium azide and 50% glycerol, pH7.3

Aliquoting is unnecessary for -20°C storage

\*\*\* 20ul sizes contain 0.1% BSA

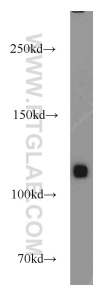
For technical support and original validation data for this product please contact:

T: 1 (888) 4PTGLAB (1-888-478-4522) (toll free in USA), or 1(312) 455-8498 (outside USA)

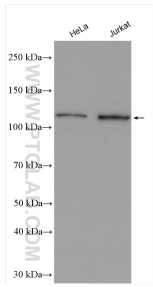
E: [proteintech@ptglab.com](mailto:proteintech@ptglab.com)  
W: [ptglab.com](http://ptglab.com)

This product is exclusively available under Proteintech Group brand and is not available to purchase from any other manufacturer.

# Selected Validation Data



mouse heart tissue were subjected to SDS PAGE followed by western blot with 55493-1-AP (MAML1 antibody) at dilution of 1:1000 incubated at room temperature for 1.5 hours.



Various lysates were subjected to SDS PAGE followed by western blot with 55493-1-AP (MAML1 antibody) at dilution of 1:1000 incubated at room temperature for 1.5 hours.