

For Research Use Only

S100A11 Monoclonal antibody

Catalog Number: 60024-1-Ig

Featured Product

5 Publications



Basic Information

Catalog Number: 60024-1-Ig	GenBank Accession Number: BC001410	Purification Method: Protein G purification
Size: 150ul, Concentration: 1600 µg/ml by Nanodrop and 1000 µg/ml by Bradford method using BSA as the standard;	GeneID (NCBI): 6282	CloneNo.: 1A3F1
Source: Mouse	Full Name: S100 calcium binding protein A11	Recommended Dilutions: WB 1:1000-1:3000 IHC 1:500-1:1000 IF 1:400-1:1600
Isotype: IgG1	Calculated MW: 105 aa, 12 kDa	
Immunogen Catalog Number: AG0343	Observed MW: 12 kDa	

Applications

Tested Applications: IF, IHC, WB, ELISA	Positive Controls: WB : T-47D cells, A431 cells, BxPC-3 cells, DU 145 cells
Cited Applications: IF, WB	IHC : human lung cancer tissue, human ovary tumor tissue, human thyroid cancer tissue
Species Specificity: human	IF : BxPC-3 cells,
Cited Species: human, mouse	
Note-IHC: suggested antigen retrieval with TE buffer pH 9.0; (*) Alternatively, antigen retrieval may be performed with citrate buffer pH 6.0	

Background Information

S100A11, also named as MLN 70, Calgizzarin and S100C, belongs to the S-100 family. It facilitates the differentiation and the cornification of keratinocytes. The naming of S100A11 systematically arises from its membership of the S100 protein family, named after their solubility in 100% saturated ammonium sulfate solution. First discovered in 1989, S100A11 has since been proposed to have direct biological functions in an assortment of physiological processes such as endo- and exocytosis, regulation of enzyme activity, cell growth and regulation, apoptosis and inflammation.

Notable Publications

Author	Pubmed ID	Journal	Application
Maria Fankhaenel	36631478	Nat Commun	IF
Zhong Xian	37062136	Phytomedicine	WB
Weeraphan Churat C	22967555	Talanta	WB

Storage

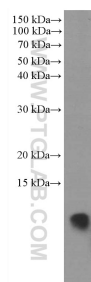
Storage:
Store at -20°C. Stable for one year after shipment.
Storage Buffer:
PBS with 0.02% sodium azide and 50% glycerol pH 7.3.
Aliquoting is unnecessary for -20°C storage

*** 20ul sizes contain 0.1% BSA

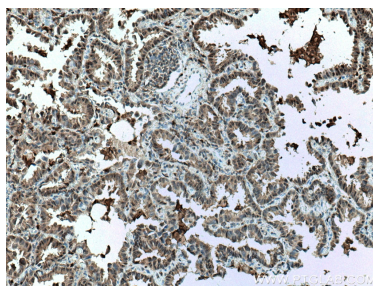
For technical support and original validation data for this product please contact:
T: 1 (888) 4PTGLAB (1-888-478-4522) (toll free in USA), or 1(312) 455-8498 (outside USA)
E: proteintech@ptglab.com
W: ptglab.com

This product is exclusively available under Proteintech Group brand and is not available to purchase from any other manufacturer.

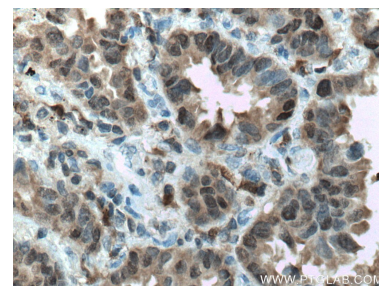
Selected Validation Data



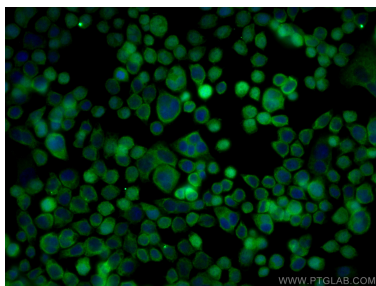
T-47D cells were subjected to SDS PAGE followed by western blot with 60024-1-Ig (S100A11 antibody) at dilution of 1:2000 incubated at room temperature for 1.5 hours.



Immunohistochemical analysis of paraffin-embedded human lung cancer tissue slide using 60024-1-Ig (S100A11 antibody) at dilution of 1:1000 (under 10x lens. Heat mediated antigen retrieval with Tris-EDTA buffer (pH 9.0)).



Immunohistochemical analysis of paraffin-embedded human lung cancer tissue slide using 60024-1-Ig (S100A11 antibody) at dilution of 1:1000 (under 40x lens. Heat mediated antigen retrieval with Tris-EDTA buffer (pH 9.0)).



Immunofluorescent analysis of (4% PFA) fixed BxPC-3 cells using S100A11 antibody (60024-1-Ig, Clone: 1A3F1) at dilution of 1:800 and CoraLite®488-Conjugated AffiniPure Goat Anti-Mouse IgG(H+L).