

For Research Use Only

# EEF1D Monoclonal antibody

Catalog Number: 60085-2-Ig

Featured Product

1 Publications



## Basic Information

### Catalog Number:

60085-2-Ig

### Size:

150ul, Concentration: 1700 ug/ml by Nanodrop and 1000 ug/ml by Bradford method using BSA as the standard;

### Source:

Mouse

### Isotype:

IgG1

### Immunogen Catalog Number:

AG0983

### GenBank Accession Number:

BC007847

### GeneID (NCBI):

1936

### UNIPROT ID:

P29692

### Full Name:

eukaryotic translation elongation factor 1 delta (guanine nucleotide exchange protein)

### Calculated MW:

31 kDa

### Observed MW:

35-40 kDa

### Purification Method:

Protein G purification

### CloneNo.:

3G4C4

### Recommended Dilutions:

WB: 1:500-1:2000

IP: 0.5-4.0 ug for 1.0-3.0 mg of total protein lysate

IHC: 1:20-1:200

## Applications

### Tested Applications:

WB, IHC, IP, ELISA

### Cited Applications:

WB, IF

### Species Specificity:

human, mouse, rat

### Cited Species:

human

**Note-IHC: suggested antigen retrieval with TE buffer pH 9.0; (\*) Alternatively, antigen retrieval may be performed with citrate buffer pH 6.0**

### Positive Controls:

**WB**: transfection MCF-7 cells, HeLa cells, Jurkat cells, MCF-7 cells, NIH/3T3 cells, RAW 264.7 cells

**IP**: MCF-7 cells,

**IHC**: human pancreas cancer tissue,

## Background Information

EEF1D, also named as EF1D and EF 1 delta, belongs to the EF-1-beta/EF-1-delta family. It is a subunit of the elongation factor-1 complex, which is responsible for the enzymatic delivery of aminoacyl tRNAs to the ribosome. EF-1-beta and EF-1-delta stimulate the exchange of GDP bound to EF-1-alpha to GTP. EEF1D is phosphorylated upon DNA damage, probably by ATM or ATR. The calculated molecular weight of EEF1D is a 31 kDa, but the modified protein is about 35-40 kDa. ( PMID: 21936567 )

## Notable Publications

| Author      | Pubmed ID | Journal | Application |
|-------------|-----------|---------|-------------|
| Qingxia Gao | 33087462  | J Virol | WB,IF       |

## Storage

### Storage:

Store at -20°C. Stable for one year after shipment.

### Storage Buffer:

PBS with 0.02% sodium azide and 50% glycerol, pH7.3

Aliquoting is unnecessary for -20°C storage

\*\*\* 20ul sizes contain 0.1% BSA

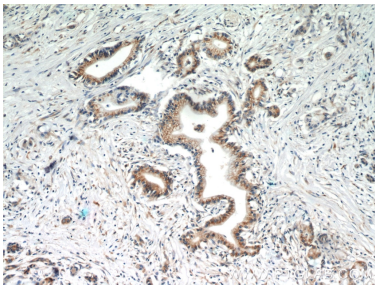
For technical support and original validation data for this product please contact:

T: 1 (888) 4PTGLAB (1-888-478-4522) (toll free in USA), or 1(312) 455-8498 (outside USA)

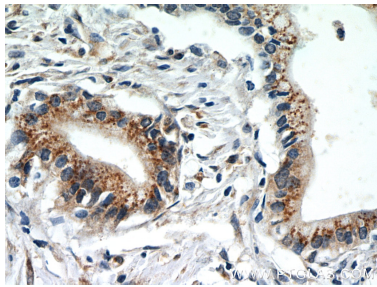
E: proteintech@ptglab.com  
W: ptglab.com

This product is exclusively available under Proteintech Group brand and is not available to purchase from any other manufacturer.

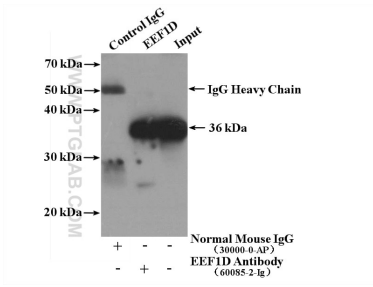
Selected Validation Data



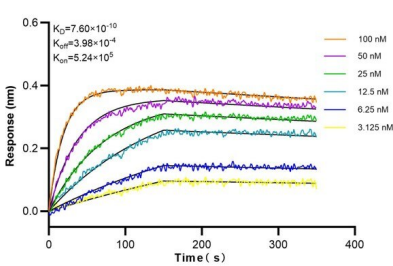
Immunohistochemical analysis of paraffin-embedded human pancreas cancer slide using 60085-2-Ig (EEF1D Antibody) at dilution of 1:50.



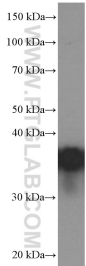
Immunohistochemical analysis of paraffin-embedded human pancreas cancer slide using 60085-2-Ig (EEF1D Antibody) at dilution of 1:50.



IP result of anti-EEF1D (IP:60085-2-Ig, 5ug; Detection:60085-2-Ig 1:1000) with MCF-7 cells lysate 3200ug.



Biolayer interferometry (BLI) kinetic assays of 60085-2-Ig against Human EEF1D were performed. The Affinity Constant is 0.76 nM.



MCF-7 cells were subjected to SDS PAGE followed by western blot with 60085-2-Ig (EEF1D Antibody) at dilution of 1:1000 incubated at room temperature for 1.5 hours.