

For Research Use Only

# CXCL16 Monoclonal antibody

Catalog Number: 60123-1-Ig

Featured Product

6 Publications



## Basic Information

Catalog Number:

60123-1-Ig

Size:

150ul, Concentration: 1289 ug/ml by Nanodrop and 1333 ug/ml by Bradford method using BSA as the standard;

Source:

Mouse

Isotype:

IgG2a

Immunogen Catalog Number:

AG4883

GenBank Accession Number:

BC017588

GeneID (NCBI):

58191

UNIPROT ID:

Q9H2A7

Full Name:

chemokine (C-X-C motif) ligand 16

Calculated MW:

273 aa, 30 kDa

Observed MW:

35 kDa

Purification Method:

Protein A purification

CloneNo.:

2H7B3

Recommended Dilutions:

WB 1:500-1:2000

## Applications

Tested Applications:

WB, ELISA

Cited Applications:

WB, IHC, IF

Species Specificity:

human

Cited Species:

human, mouse, rat

Positive Controls:

WB : HaCaT cells, SH-SY5Y cells, Calu-3 cells, A549 cells

## Background Information

CXCL16 is a recently discovered cytokine belonging to the CXC chemokine family, which is synthesised in plasmacytoid dendritic cell as a transmembrane molecule. It exists in a transmembrane and soluble form. The transmembrane form of CXCL16 functions as an adhesion molecule for CXCR6-expressing cells, whereas the soluble form of CXCL16 mediates infiltration of circulating cells into sites of injury. CXCL16, has been proposed as an important pathogenic mediator in inflammatory diseases, including rheumatoid arthritis, glomerulonephritis, or prostate cancer. CXCL16 has been implicated in some forms of renal disease such as lupus nephritis and antglomerular basement membrane nephritis. CXCL16 also plays a pivotal role in the pathogenesis of angiotensin II-induced renal injury and fibrosis through regulation of macrophage and T cell infiltration and bone marrow-derived fibroblast accumulation.

## Notable Publications

Author	Pubmed ID	Journal	Application
Miao Li	36181398	Cancer Commun (Lond)	IHC
Yuan Chen	32705248	Mol Med Rep	WB
Dan Li	35133017	FASEB J	WB

## Storage

Storage:

Store at -20°C. Stable for one year after shipment.

Storage Buffer:

PBS with 0.02% sodium azide and 50% glycerol pH 7.3.

Aliquoting is unnecessary for -20°C storage

\*\*\* 20ul sizes contain 0.1% BSA

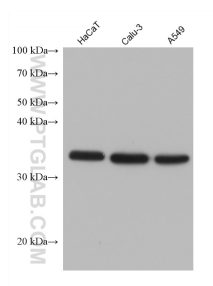
For technical support and original validation data for this product please contact:

T: 1 (888) 4PTGLAB (1-888-478-4522) (toll free in USA), or 1(312) 455-8498 (outside USA)

E: [proteintech@ptglab.com](mailto:proteintech@ptglab.com)  
W: [ptglab.com](http://ptglab.com)

This product is exclusively available under Proteintech Group brand and is not available to purchase from any other manufacturer.

## Selected Validation Data



Various lysates were subjected to SDS PAGE followed by western blot with 60123-1-Ig (CXCL16 antibody) at dilution of 1:1000 incubated at room temperature for 1.5 hours.