

For Research Use Only

# Gastroke 1 Monoclonal antibody

Catalog Number: 60130-1-Ig



## Basic Information

Catalog Number:	60130-1-Ig	GenBank Accession Number:	BC059778	Purification Method:	Protein A purification
Size:	150ul , Concentration: 1500 ug/ml by Nanodrop and 1500 ug/ml by Bradford method using BSA as the standard;	GeneID (NCBI):	56287	CloneNo.:	3C10E3
Source:	Mouse	UNIPROT ID:	Q9NS71	Recommended Dilutions:	WB 1:5000-1:50000 IHC 1:50-1:500 IF-P 1:200-1:800
Isotype:	IgG2a	Full Name:	gastroke 1		
Immunogen Catalog Number:	AG6091	Calculated MW:	22 kDa		
		Observed MW:	22 kDa		

## Applications

### Tested Applications:

WB, IHC, IF-P, ELISA

### Species Specificity:

human, rat, pig, mouse

**Note-IHC: suggested antigen retrieval with TE buffer pH 9.0; (\*) Alternatively, antigen retrieval may be performed with citrate buffer pH 6.0**

### Positive Controls:

WB : human stomach tissue, rat stomach tissue

IHC : human stomach tissue,

IF-P : human stomach tissue, mouse stomach tissue

## Background Information

Gastroke 1 (GKN1), a stomach-specific protein also known as 18 kDa antrum mucosa protein (AMP-18) or foveolin, belongs to the gastroke family of gastric mucus cell-secreted proteins. The human GKN1 gene has been localized in a region of chromosome 2p13 of about 6 kb and contains 6 exons. GKN1 is expressed only in normal human stomach, but is absent from gastric adenocarcinomas, gastro-esophageal adenocarcinoma cell lines, and other normal and tumor gastro-intestinal tissues. GKN1 may play an important role in normal gastric function and may be a gastric tumour suppressor.

## Storage

### Storage:

Store at -20°C. Stable for one year after shipment.

### Storage Buffer:

PBS with 0.02% sodium azide and 50% glycerol, pH7.3

Aliquoting is unnecessary for -20°C storage

\*\*\* 20ul sizes contain 0.1% BSA

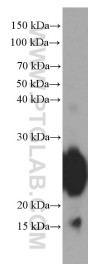
For technical support and original validation data for this product please contact:

T: 1 (888) 4PTGLAB (1-888-478-4522) (toll free in USA), or 1(312) 455-8498 (outside USA)

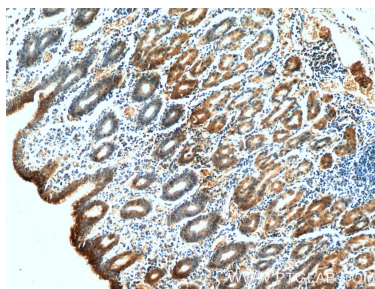
E: proteintech@ptglab.com  
W: ptglab.com

This product is exclusively available under Proteintech Group brand and is not available to purchase from any other manufacturer.

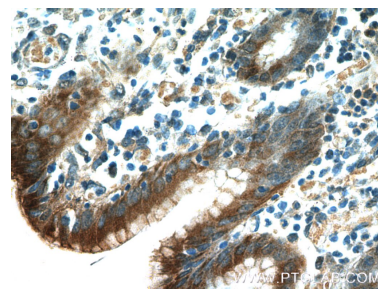
## Selected Validation Data



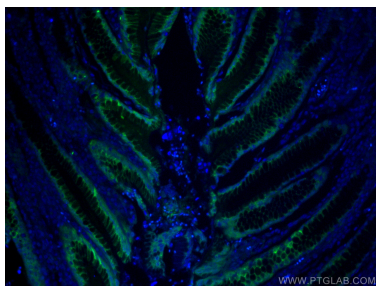
human stomach tissue were subjected to SDS PAGE followed by western blot with 60130-1-Ig (GKN1 Antibody) at dilution of 1:20000 incubated at room temperature for 1.5 hours.



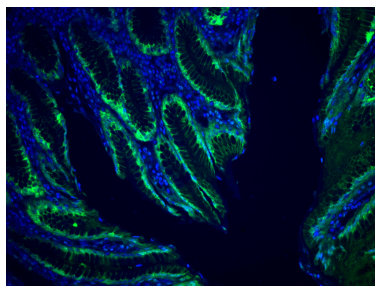
Immunohistochemical analysis of paraffin-embedded human stomach tissue slide using 60130-1-Ig (GKN1 Antibody) at dilution of 1:200 (under 10x lens).



Immunohistochemical analysis of paraffin-embedded human stomach tissue slide using 60130-1-Ig (GKN1 Antibody) at dilution of 1:200 (under 40x lens).



Immunofluorescent analysis of (4% PFA) fixed human stomach tissue using Gastrokeine 1 antibody (60130-1-Ig, Clone: 3C10E3 ) at dilution of 1:400 and CoraLite®488-Conjugated Goat Anti-Mouse IgG(H+L).



Immunofluorescent analysis of (4% PFA) fixed human stomach tissue using Gastrokeine 1 antibody (60130-1-Ig, Clone: 3C10E3 ) at dilution of 1:400 and CoraLite®488-Conjugated Goat Anti-Mouse IgG(H+L).