

For Research Use Only

GSTO1 Monoclonal antibody

Catalog Number: 60150-2-Ig **1 Publications**



Basic Information

Catalog Number: 60150-2-Ig	GenBank Accession Number: BC000127	Purification Method: Protein A purification
Size: 150ul , Concentration: 2400 ug/ml by Nanodrop and 1000 ug/ml by Bradford method using BSA as the standard;	GeneID (NCBI): 9446	CloneNo.: 5E1E10
Source: Mouse	UNIPROT ID: P78417	Recommended Dilutions: WB 1:5000-1:50000 IHC 1:50-1:500 IF/ICC 1:400-1:1600
Isotype: IgG1	Full Name: glutathione S-transferase omega 1	
Immunogen Catalog Number: AG7199	Calculated MW: 28 kDa	
	Observed MW: 27-30 kDa	

Applications

Tested Applications: WB, IHC, IF/ICC, ELISA	Positive Controls: WB : A549 cells, human heart tissue, U-937 cells, Raji cells, ROS1728 cells, NIH/3T3 cells, A431 cells, HeLa cells, Jurkat cells, K-562 cells IHC : human oesophagus cancer tissue, human liver tissue, human liver cancer tissue IF/ICC : PC-3 cells,
Cited Applications: WB	
Species Specificity: human, mouse, rat	
Cited Species: mouse	
Note-IHC: suggested antigen retrieval with TE buffer pH 9.0; (*) Alternatively, antigen retrieval may be performed with citrate buffer pH 6.0	

Background Information

Glutathione-S-transferase omega 1 (GSTO1) belongs to a new subfamily of GSTs and is the rate limiting enzyme for biotransformation of inorganic arsenic, environmental carcinogen. Expression of GSTO1-1 was abundant in a wide range of normal tissues, particularly liver, macrophages, glial cells, and endocrine cells.

Notable Publications

Author	Pubmed ID	Journal	Application
Huihui Wang	29108910	Toxicol Appl Pharmacol	WB

Storage

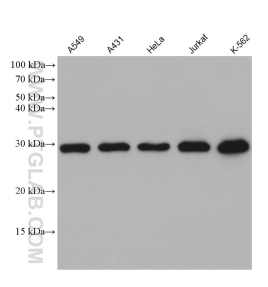
Storage:
Store at -20°C. Stable for one year after shipment.
Storage Buffer:
PBS with 0.02% sodium azide and 50% glycerol pH 7.3.
Aliquoting is unnecessary for -20°C storage

*** 20ul sizes contain 0.1% BSA

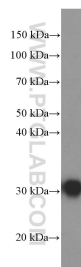
For technical support and original validation data for this product please contact:
T: 1 (888) 4PTGLAB (1-888-478-4522) (toll free in USA), or 1(312) 455-8498 (outside USA)
E: proteintech@ptglab.com
W: ptglab.com

This product is exclusively available under Proteintech Group brand and is not available to purchase from any other manufacturer.

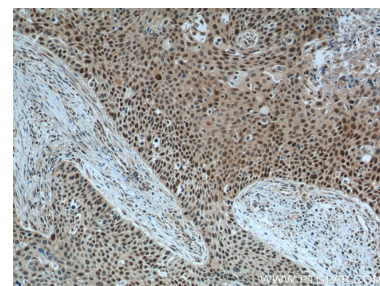
Selected Validation Data



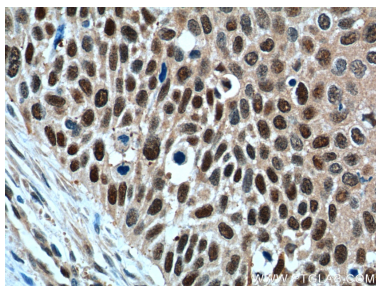
Various lysates were subjected to SDS PAGE followed by western blot with 60150-2-Ig (GSTO1 antibody) at dilution of 1:10000 incubated at room temperature for 1.5 hours.



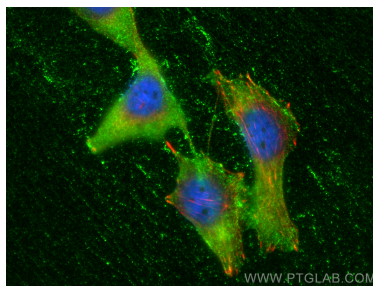
human heart tissue were subjected to SDS PAGE followed by western blot with 60150-2-Ig (GSTO1 Antibody) at dilution of 1:4000 incubated at room temperature for 1.5 hours.



Immunohistochemical analysis of paraffin-embedded human oesophagus cancer tissue slide using 60150-2-Ig (GSTO1 Antibody) at dilution of 1:400 (under 10x lens). Heat mediated antigen retrieval with Tris-EDTA buffer (pH 9.0).



Immunohistochemical analysis of paraffin-embedded human oesophagus cancer tissue slide using 60150-2-Ig (GSTO1 Antibody) at dilution of 1:400 (under 40x lens). Heat mediated antigen retrieval with Tris-EDTA buffer (pH 9.0).



Immunofluorescent analysis of (-20°C Ethanol) fixed PC-3 cells using GSTO1 antibody (60150-2-Ig, Clone: 5E1E10) at dilution of 1:800 and Coralite® 488-Conjugated Goat Anti-Mouse IgG(H+L), CL594-Phalloidin (red).