

For Research Use Only

BCL2 Monoclonal antibody

Catalog Number: 60178-1-Ig

Featured Product

347 Publications



Basic Information

Catalog Number:

60178-1-Ig

Size:

150ul, Concentration: 1500 ug/ml by 596 Nanodrop;

Source:

Mouse

Isotype:

IgG2b

Immunogen Catalog Number:

AG3508

GenBank Accession Number:

BC027258

GeneID (NCBI):

596

UNIPROT ID:

P10415

Full Name:

B-cell CLL/lymphoma 2

Calculated MW:

26 kDa

Observed MW:

26 kDa

Purification Method:

Protein A purification

CloneNo.:

4H8C6

Recommended Dilutions:

IP: 0.5-4.0 ug for 1.0-3.0 mg of total protein lysate

IHC: 1:6400-1:25600

IF-P: 1:50-1:500

IF/ICC: 1:200-1:800

Applications

Tested Applications:

IHC, IF/ICC, IF-P, IP, ELISA

Cited Applications:

IHC, IF, IP, CoIP

Species Specificity:

human, pig

Cited Species:

human, pig, rabbit, monkey, bovine, hamster

Note-IHC: suggested antigen retrieval with TE buffer pH 9.0; (*) Alternatively, antigen retrieval may be performed with citrate buffer pH 6.0

Positive Controls:

IP: U-937 cells,

IHC: human appendicitis tissue, human lymphoma tissue, human tonsillitis tissue, Jurkat cells

IF-P: human appendicitis tissue, human tonsillitis tissue

IF/ICC: MCF-7 cells,

Background Information

BCL2 belongs to the Bcl-2 family. It suppresses apoptosis in a variety of cell systems including factor-dependent lymphohematopoietic and neural cells. BCL2 regulates cell death by controlling the mitochondrial membrane permeability. It appears to function in a feedback loop system with caspases. BCL2 inhibits caspase activity either by preventing the release of cytochrome c from the mitochondria and/or by binding to the apoptosis-activating factor (APAF-1).

Notable Publications

Author	Pubmed ID	Journal	Application
Ji Xing	36230734	Cancers (Basel)	IF
Fei Yu	36175965	Chin Med	WB
Jinliang Liu	34630847	Oxid Med Cell Longev	WB

Storage

Storage:

Store at -20°C. Stable for one year after shipment.

Storage Buffer:

PBS with 0.02% sodium azide and 50% glycerol, pH7.3

Aliquoting is unnecessary for -20°C storage

*** 20ul sizes contain 0.1% BSA

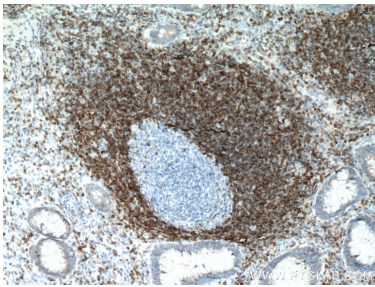
For technical support and original validation data for this product please contact:

T: 1 (888) 4PTGLAB (1-888-478-4522) (toll free in USA), or 1(312) 455-8498 (outside USA)

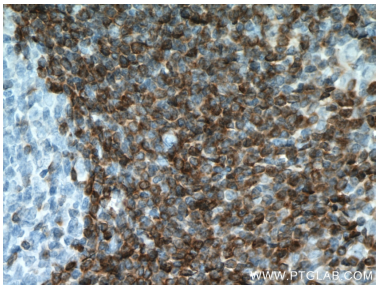
E: proteintech@ptglab.com
W: ptglab.com

This product is exclusively available under Proteintech Group brand and is not available to purchase from any other manufacturer.

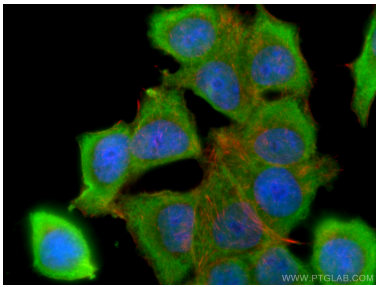
Selected Validation Data



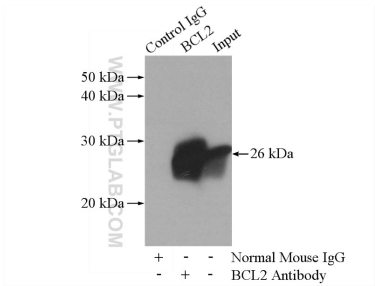
Immunohistochemical analysis of paraffin-embedded human appendicitis tissue slide using 60178-1-Ig (BCL2 antibody) at dilution of 1:12800 (under 10x lens. Heat mediated antigen retrieval with Tris-EDTA buffer (pH 9.0).



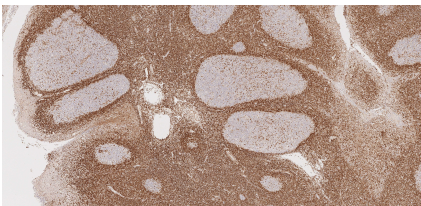
Immunohistochemical analysis of paraffin-embedded human appendicitis tissue slide using 60178-1-Ig (BCL2 antibody) at dilution of 1:12800 (under 40x lens. Heat mediated antigen retrieval with Tris-EDTA buffer (pH 9.0).



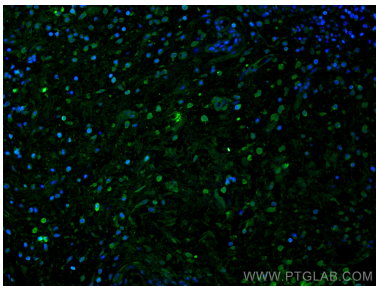
Immunofluorescent analysis of (-20°C Ethanol) fixed MCF-7 cells using BCL2 antibody (60178-1-Ig, Clone: 4H8C6) at dilution of 1:400 and CoraLite®488-Conjugated AffiniPure Goat Anti-Mouse IgG(H+L).



IP result of anti-BCL2 (IP:60178-1-Ig, 5ug; Detection:60178-1-Ig 1:1000) with U-937 cells lysate 4000ug.



Immunohistochemical analysis of paraffin-embedded human tonsillitis tissue slide using 60178-1-Ig (BCL2 antibody) at dilution of 1:10000 (under 10x lens). Heat mediated antigen retrieval with Tris-EDTA buffer (pH 9.0).



Immunofluorescent analysis of (4% PFA) fixed human appendicitis tissue using BCL2 antibody (60178-1-Ig, Clone: 4H8C6) at dilution of 1:200 and CoraLite®488-Conjugated AffiniPure Goat Anti-Mouse IgG(H+L).