

For Research Use Only

# WTAP Monoclonal antibody

Catalog Number: 60188-1-Ig

Featured Product

68 Publications



## Basic Information

### Catalog Number:

60188-1-Ig

### Size:

150ul, Concentration: 1000 µg/ml by Nanodrop;

### Source:

Mouse

### Isotype:

IgG1

### Immunogen Catalog Number:

AG0259

### GenBank Accession Number:

BC000383

### GeneID (NCBI):

9589

### UNIPROT ID:

Q15007

### Full Name:

Wilms tumor 1 associated protein

### Calculated MW:

45 kDa

### Observed MW:

50 kDa

### Purification Method:

Protein A purification

### CloneNo.:

4A10G9

### Recommended Dilutions:

WB 1:5000-1:50000

IP 0.5-4.0 µg for 1.0-3.0 mg of total protein lysate

IHC 1:500-1:2000

IF 1:50-1:500

## Applications

### Tested Applications:

IF, IHC, IP, WB, ELISA

### Cited Applications:

WB, RIP, IP, IHC, IF, FC

### Species Specificity:

human, mouse, rat

### Cited Species:

human, rat, mouse, drosophila

**Note-IHC: suggested antigen retrieval with TE buffer pH 9.0; (\*) Alternatively, antigen retrieval may be performed with citrate buffer pH 6.0**

### Positive Controls:

**WB:** MCF-7 cells, HeLa cells, HEK-293 cells, HepG2 cells, LNCaP cells, Jurkat cells, HSC-T6 cells, NIH/3T3 cells, 4T1 cells

**IP:** HeLa cells,

**IHC:** human colon tissue,

**IF:** HeLa cells,

## Background Information

WTAP, also named as KIAA0105 and hFL(2)D, is previously identified as a protein associated with Wilms' tumor-1 (WT-1) protein that is essential for the development of the genitourinary system. It is a Pre-mRNA-splicing regulator protein. It is a regulatory subunit of the WMM N6-methyltransferase complex which plays a role in the efficiency of mRNA splicing and processing and mRNA stability. It is required for accumulation of METTL3 and METTL14 to nuclear speckle. MW of WTAP is 45-50 kDa due to phosphorylation.

## Notable Publications

Author	Pubmed ID	Journal	Application
Fanpeng Zhao	34593014	Mol Neurodegener	WB
Jing Wang	32998774	J Ovarian Res	WB
Qian Luo	36175708	Med Oncol	IHC, WB

## Storage

### Storage:

Store at -20°C. Stable for one year after shipment.

### Storage Buffer:

PBS with 0.02% sodium azide and 50% glycerol pH 7.3.

Aliquoting is unnecessary for -20°C storage

\*\*\* 20ul sizes contain 0.1% BSA

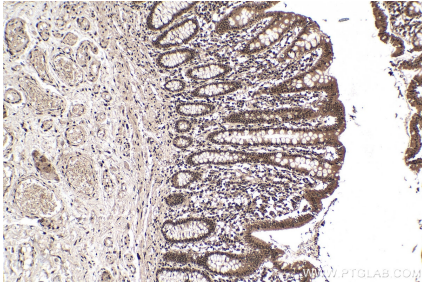
For technical support and original validation data for this product please contact:

T: 1 (888) 4PTGLAB (1-888-478-4522) (toll free in USA), or 1(312) 455-8498 (outside USA)

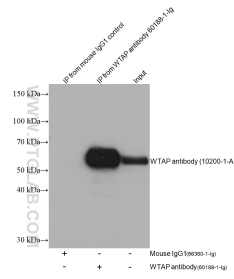
E: [proteintech@ptglab.com](mailto:proteintech@ptglab.com)  
W: [ptglab.com](http://ptglab.com)

This product is exclusively available under Proteintech Group brand and is not available to purchase from any other manufacturer.

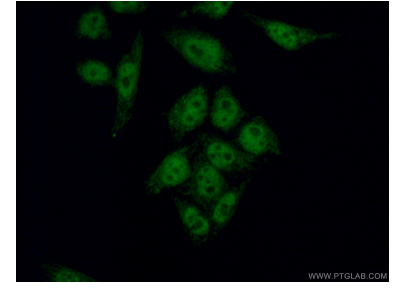
## Selected Validation Data



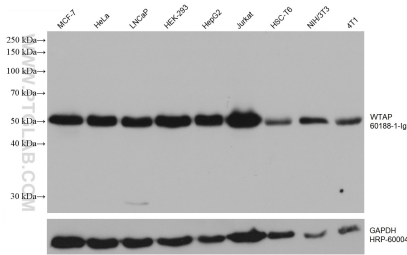
Immunohistochemical analysis of paraffin-embedded human colon tissue slide using 60188-1-Ig (WTAP antibody) at dilution of 1:1000 (under 10x lens). Heat mediated antigen retrieval with Tris-EDTA buffer (pH 9.0).



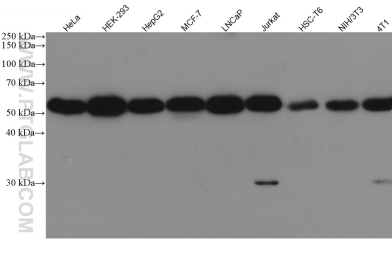
IP result of anti-WTAP (IP:60188-1-Ig, 4ug; Detection:10200-1-AP 1:8000) with HeLa cells lysate 2000 ug.



Immunofluorescent analysis of (4% PFA) fixed HeLa cells using 60188-1-Ig (WTAP antibody) at dilution of 1:50 and Alexa Fluor 488-conjugated AffiniPure Goat Anti-Mouse IgG(H+L).



Various lysates were subjected to SDS PAGE followed by western blot with 60188-1-Ig (WTAP antibody) at dilution of 1:20000 incubated at room temperature for 1.5 hours. The membrane was stripped and reblotted with HRP-conjugated GAPDH Monoclonal antibody (HRP-60004) as loading control.



Various lysates were subjected to SDS PAGE followed by western blot with 60188-1-Ig (WTAP antibody) at dilution of 1:20000 incubated at room temperature for 1.5 hours.