

For Research Use Only

MCRS1 Monoclonal antibody

Catalog Number: 60215-1-Ig



Basic Information

Catalog Number: 60215-1-Ig	GenBank Accession Number: BC011794	Purification Method: Protein A purification
Size: 150ul , Concentration: 2400 ug/ml by Nanodrop and 1500 ug/ml by Bradford method using BSA as the standard;	GeneID (NCBI): 10445	CloneNo.: 2H10E10
Source: Mouse	UNIPROT ID: Q96EZ8	Recommended Dilutions: WB 1:500-1:2000
Isotype: IgG2a	Full Name: microspherule protein 1	
Immunogen Catalog Number: AG1904	Calculated MW: 51 kDa	
	Observed MW: 55+110 kDa	

Applications

Tested Applications: WB, ELISA	Positive Controls: WB : ROS1728 cells, U2OS cells
Species Specificity: human, mouse, rat	

Background Information

MCRS1, also named INO80Q, MSP58 or p78, is a nucleolar protein expressed in the very early S phase. It modulates the transcription repressor activity of DAXX by recruiting it to the nucleolus. MCRS1 is also present on polyribosomes of synaptoneurosome as a novel RNA-binding protein to activate the rRNA transcription. The forkhead-associated domain of MCRS1 is involved in association with centrosomal protein Nde1, comprising a component of the centrosome and taking an essential role in viability. Its isoform MCRS2 might be a linker between telomere maintenance and cell-cycle regulation by interacting with LPT5/PinX1, a telomerase-inhibitory protein. MCRS1 is detected by Western blot as a highly modified protein at 78 kDa and minor bands at about 62 and 55 kDa.

Storage

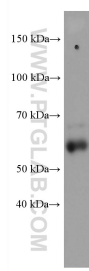
Storage:
Store at -20°C. Stable for one year after shipment.
Storage Buffer:
PBS with 0.02% sodium azide and 50% glycerol pH 7.3.
Aliquoting is unnecessary for -20°C storage

*** 20ul sizes contain 0.1% BSA

For technical support and original validation data for this product please contact:
T: 1 (888) 4PTGLAB (1-888-478-4522) (toll free in USA), or 1(312) 455-8498 (outside USA)
E: proteintech@ptglab.com
W: ptglab.com

This product is exclusively available under Proteintech Group brand and is not available to purchase from any other manufacturer.

Selected Validation Data



ROS1728 cells were subjected to SDS PAGE followed by western blot with 60215-1-Ig (MCRS1 antibody) at dilution of 1:1000 incubated at room temperature for 1.5 hours.