

For Research Use Only

SMMHC Monoclonal antibody

Catalog Number: 60222-1-Ig **5 Publications**



Basic Information

Catalog Number: 60222-1-Ig	GenBank Accession Number: BC101677	Purification Method: Protein A purification
Size: 150ul , Concentration: 1737 µg/ml by Nanodrop and 1000 µg/ml by Bradford method using BSA as the standard;	GeneID (NCBI): 4629	CloneNo.: 5C6D3
Source: Mouse	Full Name: myosin, heavy chain 11, smooth muscle	Recommended Dilutions: WB 1:2000-1:20000 IHC 1:500-1:2000 IF 1:50-1:500
Isotype: IgG1	Calculated MW: 1938 aa, 224 kDa	
Immunogen Catalog Number: AG13397	Observed MW: 220 kDa	

Applications

Tested Applications:

IF, IHC, WB, ELISA

Cited Applications:

IF, WB

Species Specificity:

human, mouse, rat, pig, rabbit

Cited Species:

human, rat, mouse

Note-IHC: suggested antigen retrieval with TE buffer pH 9.0; (*) Alternatively, antigen retrieval may be performed with citrate buffer pH 6.0

Positive Controls:

WB : rabbit stomach tissue, human ileum tissue, rat rectum tissue, HeLa cells, rabbit large intestine, pig stomach, pig rectum, rat colon, mouse colon

IHC : human breast hyperplasia tissue,

IF : HeLa cells,

Background Information

SMMHC (smooth muscle myosin heavy chain; MYH11) is a contractile protein of smooth muscle cells. It is specifically expressed in cells derived from smooth muscle lineages. SMMHC is used as vascular smooth muscle cell (vSMC) contractile marker. It is also an excellent marker for myoepithelial cells, with no or few cross-reaction with myofibroblasts, thus very useful in the evaluation of stromal invasion.

Notable Publications

Author	Pubmed ID	Journal	Application
Bao-Ying Luo	35643386	Biochim Biophys Acta Mol Basis Dis	IF
Hongliang Li	35299056	Atherosclerosis	WB,IF
Qiao Yu	33812737	Nutr Metab Cardiovasc Dis	WB

Storage

Storage:

Store at -20°C. Stable for one year after shipment.

Storage Buffer:

PBS with 0.02% sodium azide and 50% glycerol pH 7.3.

Aliquoting is unnecessary for -20°C storage

***** 20ul sizes contain 0.1% BSA**

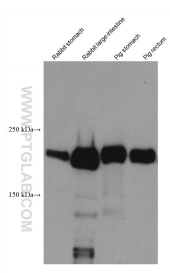
For technical support and original validation data for this product please contact:

T: 1 (888) 4PTGLAB (1-888-478-4522) (toll free in USA), or 1(312) 455-8498 (outside USA)

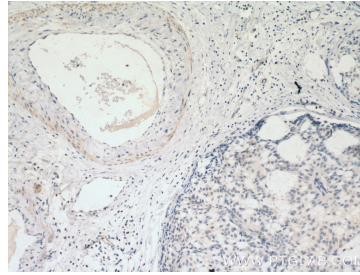
E: proteintech@ptglab.com
W: ptglab.com

This product is exclusively available under Proteintech Group brand and is not available to purchase from any other manufacturer.

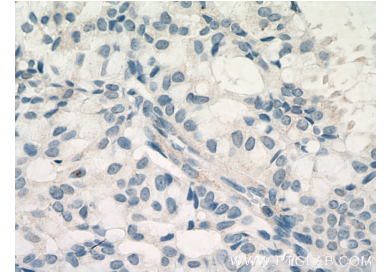
Selected Validation Data



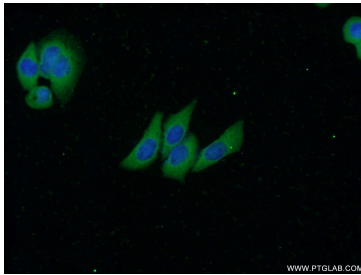
Various lysates were subjected to SDS PAGE followed by western blot with 60222-1-Ig (SMMHC antibody) at dilution of 1:5000 incubated at room temperature for 1.5 hours.



Immunohistochemical analysis of paraffin-embedded human breast hyperplasia tissue slide using 60222-1-Ig (SMMHC antibody) at dilution of 1:1000 (under 10x lens. Heat mediated antigen retrieval with Tris-EDTA buffer (pH 9.0).



Immunohistochemical analysis of paraffin-embedded human breast hyperplasia tissue slide using 60222-1-Ig (SMMHC antibody) at dilution of 1:1000 (under 40x lens. Heat mediated antigen retrieval with Tris-EDTA buffer (pH 9.0).



Immunofluorescent analysis of HeLa cells using 60222-1-Ig (SMMHC antibody) at dilution of 1:50 and Alexa Fluor 488-conjugated AffiniPure Goat Anti-Mouse IgG (H+L).