

For Research Use Only

Galectin-1 Monoclonal antibody

Catalog Number: 60223-1-Ig

Featured Product

5 Publications



Basic Information

Catalog Number:

60223-1-Ig

Size:

150ul, Concentration: 1900 ug/ml by Nanodrop and 1500 ug/ml by Bradford method using BSA as the standard;

Source:

Mouse

Isotype:

IgG1

Immunogen Catalog Number:

AG2432

GenBank Accession Number:

BC020675

GeneID (NCBI):

3956

UNIPROT ID:

P09382

Full Name:

lectin, galactoside-binding, soluble, 1

Calculated MW:

15 kDa

Observed MW:

13 kDa

Purification Method:

Protein A purification

CloneNo.:

3G10D2

Recommended Dilutions:

WB 1:5000-1:50000

IHC 1:2000-1:8000

IF-P 1:2000-1:8000

IF/ICC 1:400-1:1600

Applications

Tested Applications:

WB, IHC, IF/ICC, IF-P, ELISA

Cited Applications:

WB, IF

Species Specificity:

human

Cited Species:

human

Note-IHC: suggested antigen retrieval with TE buffer pH 9.0; (*) Alternatively, antigen retrieval may be performed with citrate buffer pH 6.0

Positive Controls:

WB: HCT 116 cells, human placenta tissue, human heart tissue, HepG2 cells, U2OS cells, A549 cells, HeLa cells, L02 cells

IHC: human colon cancer tissue, human pancreas cancer tissue

IF-P: human colon cancer tissue,

IF/ICC: U2OS cells, Saos-2 cells, human colon cancer tissue

Background Information

Galectins are a family of animal lectins defined by shared characteristic amino-acid sequences and affinity for β -galactose-containing oligosaccharides (PMID: 8063692). Galectin-1 contains one carbohydrate recognition domain (CRD) and occurs as a monomer as well as a non-covalent homodimer (PMID: 16840800). It is differentially expressed by various normal and pathological tissues. Galectin-1 is a multifunctional protein that is involved in cell adhesion, migration, proliferation, apoptosis, inflammation, tumour transformation and growth (PMID:15785741).

Notable Publications

Author	Pubmed ID	Journal	Application
Qi Zhang	36177897	Int J Oncol	IF
Marilyne Labrie	29038585	Sci Rep	IF
Maria Claudia Vladoiu	26543238	Oncotarget	WB

Storage

Storage:

Store at -20°C. Stable for one year after shipment.

Storage Buffer:

PBS with 0.02% sodium azide and 50% glycerol pH 7.3.

Aliquoting is unnecessary for -20°C storage

*** 20ul sizes contain 0.1% BSA

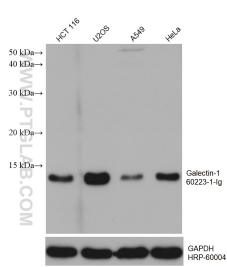
For technical support and original validation data for this product please contact:

T: 1 (888) 4PTGLAB (1-888-478-4522) (toll free in USA), or 1(312) 455-8498 (outside USA)

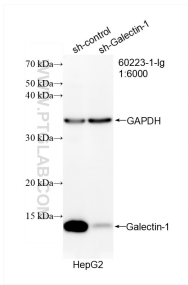
E: proteintech@ptglab.com
W: ptglab.com

This product is exclusively available under Proteintech Group brand and is not available to purchase from any other manufacturer.

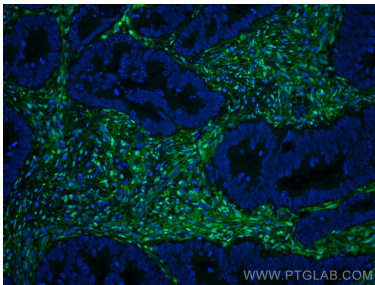
Selected Validation Data



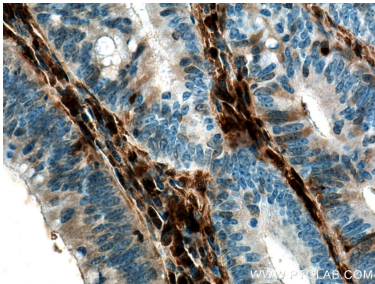
Various lysates were subjected to SDS PAGE followed by western blot with 60223-1-Ig (Galectin-1 antibody) at dilution of 1:15000 incubated at room temperature for 1.5 hours. The membrane was stripped and reblotted with HRP-conjugated GAPDH Monoclonal antibody (HRP-60004) as loading control.



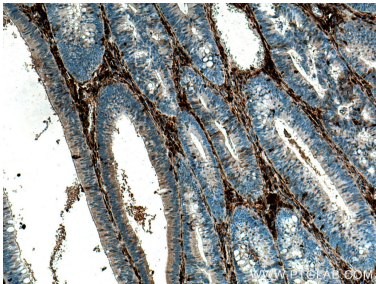
WB result of Galectin-1 antibody (60223-1-Ig; 1:6000; incubated at room temperature for 1.5 hours) with sh-Control and sh-Galectin-1 transfected HepG2 cells.



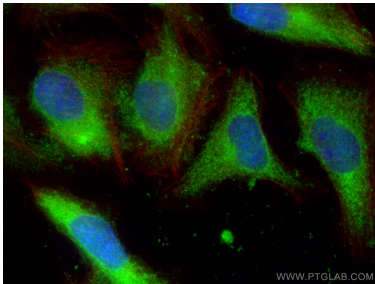
Immunofluorescent analysis of (4% PFA) fixed human colon cancer tissue using Galectin-1 antibody (60223-1-Ig, Clone: 3G10D2) at dilution of 1:4000 and CoraLite®488-Conjugated Goat Anti-Mouse IgG(H+L).



Immunohistochemical analysis of paraffin-embedded human colon cancer tissue slide using 60223-1-Ig (Galectin-1 antibody) at dilution of 1:4000 (under 40x lens). Heat mediated antigen retrieval with Tris-EDTA buffer (pH 9.0).



Immunohistochemical analysis of paraffin-embedded human colon cancer tissue slide using 60223-1-Ig (Galectin-1 antibody) at dilution of 1:4000 (under 10x lens). Heat mediated antigen retrieval with Tris-EDTA buffer (pH 9.0).



Immunofluorescent analysis of (-20°C Ethanol) fixed U2OS cells using Galectin-1 antibody (60223-1-Ig, Clone: 3G10D2) at dilution of 1:800 and CoraLite®488-Conjugated Goat Anti-Mouse IgG(H+L), CL594-Phalloidin (red).