

For Research Use Only

IFT88 Monoclonal antibody

Catalog Number: 60227-1-Ig

Featured Product

8 Publications



Basic Information

Catalog Number:

60227-1-Ig

Size:

150ul, Concentration: 1400 ug/ml by 8100

Nanodrop and 1000 ug/ml by Bradford method using BSA as the standard;

Source:

Mouse

Isotype:

IgG1

Immunogen Catalog Number:

AG4980

GenBank Accession Number:

BC030776

GeneID (NCBI):

8100

UNIPROT ID:

Q13099

Full Name:

intraflagellar transport 88 homolog (Chlamydomonas)

Calculated MW:

94 kDa

Observed MW:

88-95 kDa

Purification Method:

Protein G purification

CloneNo.:

4A4G5

Recommended Dilutions:

WB: 1:500-1:2000

IP: 0.5-4.0 ug for 1.0-3.0 mg of total protein lysate

IHC: 1:20-1:200

Applications

Tested Applications:

WB, IHC, IP, ELISA

Cited Applications:

WB, IF

Species Specificity:

human, mouse, rat

Cited Species:

human, mouse

Note-IHC: suggested antigen retrieval with TE buffer pH 9.0; (*) Alternatively, antigen retrieval may be performed with citrate buffer pH 6.0

Positive Controls:

WB: Human testis, tissue

IP: PC-3 cells,

IHC: human kidney tissue, human heart tissue, human pancreas tissue

Background Information

Intraflagellar transport (IFT), mediated by molecular motors and IFT particles, is an important transport process that occurs in the cilium and has been shown to be essential for the assembly and maintenance of cilia and flagella in many organisms. IFT88 (intraflagellar transport protein 88; also known as TG737 or TTC10) is a component of IFT particles and required for cilium biogenesis. Defects in IFT88/TG737 lead to polycystic kidney disease (11062270). IFT88 localizes to spindle poles during mitosis and is required for spindle orientation in mitosis (21441926). This antibody was raised against the C-terminal region of human IFT88 and can detect the endogenous level of IFT88.

Notable Publications

Author	Pubmed ID	Journal	Application
Ji Yeon Choi	34500843	Molecules	WB
Jiawei Li	34746145	Front Cell Dev Biol	WB
Caleb S Hayes	31188487	J Cell Physiol	WB

Storage

Storage:

Store at -20°C. Stable for one year after shipment.

Storage Buffer:

PBS with 0.02% sodium azide and 50% glycerol, pH7.3

Aliquoting is unnecessary for -20°C storage

*** 20ul sizes contain 0.1% BSA

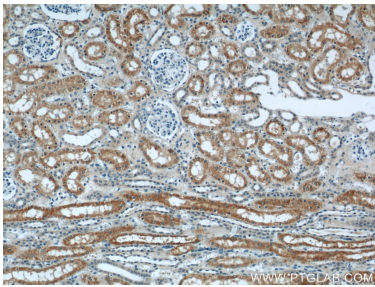
For technical support and original validation data for this product please contact:

T: 1 (888) 4PTGLAB (1-888-478-4522) (toll free in USA), or 1(312) 455-8498 (outside USA)

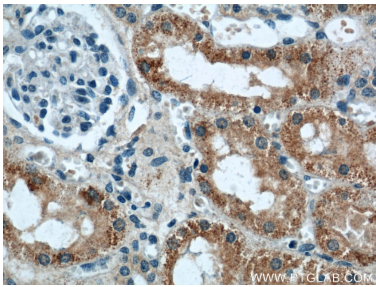
E: proteintech@ptglab.com
W: ptglab.com

This product is exclusively available under Proteintech Group brand and is not available to purchase from any other manufacturer.

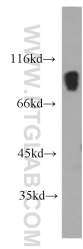
Selected Validation Data



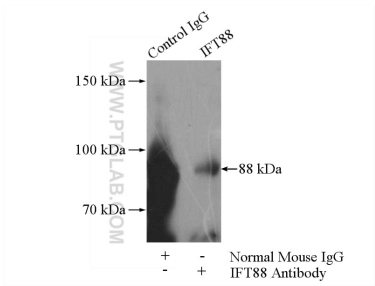
Immunohistochemical analysis of paraffin-embedded human kidney using 60227-1-Ig(IFT88 antibody) at dilution of 1:50 (under 10x lens).



Immunohistochemical analysis of paraffin-embedded human kidney using 60227-1-Ig(IFT88 antibody) at dilution of 1:50 (under 40x lens).



human testis tissue were subjected to SDS PAGE followed by western blot with 60227-1-Ig (IFT88 antibody) at dilution of 1:1000 incubated at room temperature for 1.5 hours.



IP result of anti-IFT88 (IP:60227-1-Ig, 5ug; Detection:60227-1-Ig 1:800) with PC-3 cells lysate 1040ug.