

For Research Use Only

Cytoglobin Monoclonal antibody

Catalog Number: 60228-1-Ig **2 Publications**



Basic Information

Catalog Number: 60228-1-Ig	GenBank Accession Number: BC029798	Purification Method: Protein A purification
Size: 150ul, Concentration: 1000 µg/ml by Bradford method using BSA as the standard;	GeneID (NCBI): 114757	CloneNo.: 4C7E11
Source: Mouse	Full Name: cytoglobin	Recommended Dilutions: WB 1:500-1:2000 IHC 1:200-1:800 IF 1:400-1:1600
Isotype: IgG1	Calculated MW: 190 aa, 21 kDa	
Immunogen Catalog Number: AG4161	Observed MW: 27-29 kDa	

Applications

Tested Applications: IF, IHC, WB, ELISA	Positive Controls: WB : Human heart, pig heart tissue, human heart tissue, Transfected HEK-293 cells, rabbit heart tissue IHC : human liver tissue, human heart tissue, human bladder tissue IF : HeLa cells,
Cited Applications: IF, WB	
Species Specificity: human, mouse, pig, rat	
Cited Species: human	
Note-IHC: suggested antigen retrieval with TE buffer pH 9.0; (*) Alternatively, antigen retrieval may be performed with citrate buffer pH 6.0	

Background Information

Cytoglobin is a ubiquitously expressed hexacoordinate hemoglobin that may facilitate diffusion of oxygen through tissues. The protein, with calculated MW of 21 kDa, runs as a 29 kDa one in canine retina, kidney, liver, lung, and heart. It may be caused by posttranslational modification of the protein. Various immuno-staining patterns were reported including nuclear, cytoplasm and extracellular location.

Notable Publications

Author	Pubmed ID	Journal	Application
Shazhou Ye	33611811	J Cell Mol Med	WB
Peng Zhou	35397613	Cell Death Dis	WB,IF

Storage

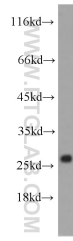
Storage:
Store at -20°C. Stable for one year after shipment.
Storage Buffer:
PBS with 0.02% sodium azide and 50% glycerol pH 7.3.
Aliquoting is unnecessary for -20°C storage

*** 20ul sizes contain 0.1% BSA

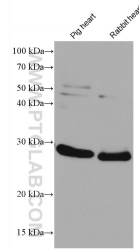
For technical support and original validation data for this product please contact:
T: 1 (888) 4PTGLAB (1-888-478-4522) (toll free in USA), or 1(312) 455-8498 (outside USA)
E: proteintech@ptglab.com
W: ptglab.com

This product is exclusively available under Proteintech Group brand and is not available to purchase from any other manufacturer.

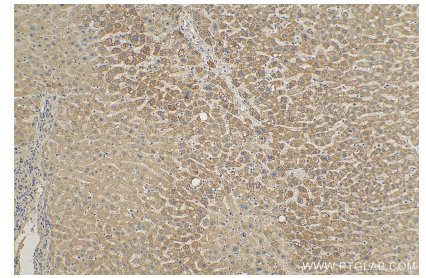
Selected Validation Data



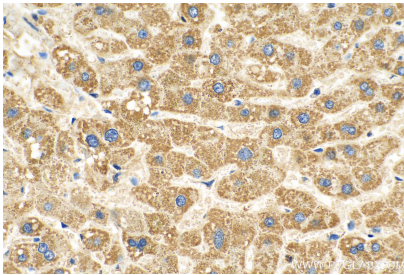
human heart tissue were subjected to SDS PAGE followed by western blot with 60228-1-Ig (Cytoglobin antibody) at dilution of 1:1000 incubated at room temperature for 1.5 hours.



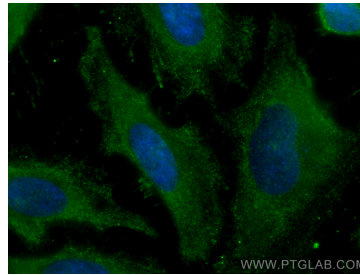
Various lysates were subjected to SDS PAGE followed by western blot with 60228-1-Ig (Cytoglobin antibody) at dilution of 1:10000 incubated at room temperature for 1.5 hours.



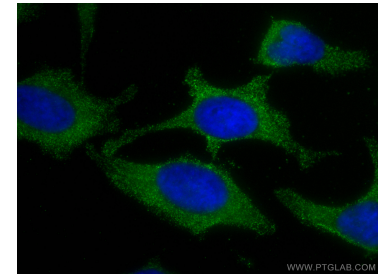
Immunohistochemical analysis of paraffin-embedded human liver tissue slide using 60228-1-Ig (Cytoglobin antibody) at dilution of 1:400 (under 10x lens). Heat mediated antigen retrieval with Tris-EDTA buffer (pH 9.0).



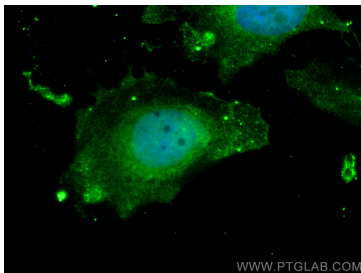
Immunohistochemical analysis of paraffin-embedded human liver tissue slide using 60228-1-Ig (Cytoglobin antibody) at dilution of 1:400 (under 40x lens). Heat mediated antigen retrieval with Tris-EDTA buffer (pH 9.0).



Immunofluorescent analysis of (-20°C Methanol) fixed HeLa cells using Cytoglobin antibody (60228-1-Ig, Clone: 4C7E11) at dilution of 1:800 and CoraLite®488-Conjugated AffiniPure Goat Anti-Mouse IgG(H+L).



Immunofluorescent analysis of (-20°C Methanol) fixed HeLa cells using Cytoglobin antibody (60228-1-Ig, Clone: 4C7E11) at dilution of 1:400 and CoraLite®488-Conjugated AffiniPure Goat Anti-Mouse IgG(H+L).



Immunofluorescent analysis of (4% PFA) fixed HeLa cells using Cytoglobin antibody (60228-1-Ig, Clone: 4C7E11) at dilution of 1:800 and CoraLite®488-Conjugated AffiniPure Goat Anti-Mouse IgG(H+L).