

For Research Use Only

# COTL1 Monoclonal antibody

Catalog Number: 60237-1-Ig

Featured Product



## Basic Information

Catalog Number:

60237-1-Ig

Size:

150ul, Concentration: 1800 ug/ml by Nanodrop and 873 ug/ml by Bradford method using BSA as the standard;

Source:

Mouse

Isotype:

IgG1

Immunogen Catalog Number:

AG1230

GenBank Accession Number:

BC010884

GeneID (NCBI):

23406

UNIPROT ID:

Q14019

Full Name:

coactosin-like 1 (Dictyostelium)

Calculated MW:

16 kDa

Observed MW:

14-16 kDa

Purification Method:

Protein G purification

CloneNo.:

4A3D9

Recommended Dilutions:

WB 1:2000-1:10000

IHC 1:500-1:2000

IF/ICC 1:200-1:800

## Applications

Tested Applications:

WB, IHC, IF/ICC, ELISA

Species Specificity:

human, mouse

**Note-IHC: suggested antigen retrieval with TE buffer pH 9.0; (\*) Alternatively, antigen retrieval may be performed with citrate buffer pH 6.0**

Positive Controls:

WB : A431 cells, fetal human brain tissue, human peripheral blood platelets, HeLa cells

IHC : human lung cancer tissue,

IF/ICC : HepG2 cells,

## Background Information

COTL1, also named as CLP, binds to F-actin in a calcium-independent manner. And it has no direct effect on actin depolymerization.

## Storage

Storage:

Store at -20°C. Stable for one year after shipment.

Storage Buffer:

PBS with 0.02% sodium azide and 50% glycerol pH 7.3.

Aliquoting is unnecessary for -20°C storage

\*\*\* 20ul sizes contain 0.1% BSA

For technical support and original validation data for this product please contact:

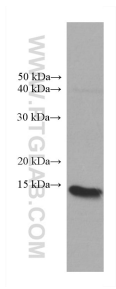
T: 1 (888) 4PTGLAB (1-888-478-4522) (toll free in USA), or 1(312) 455-8498 (outside USA)

E: [proteintech@ptglab.com](mailto:proteintech@ptglab.com)

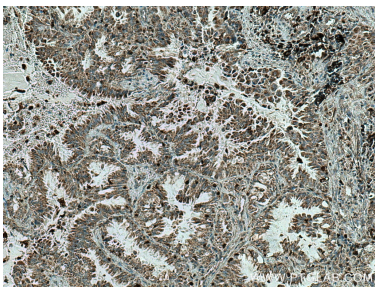
W: [ptglab.com](http://ptglab.com)

This product is exclusively available under Proteintech Group brand and is not available to purchase from any other manufacturer.

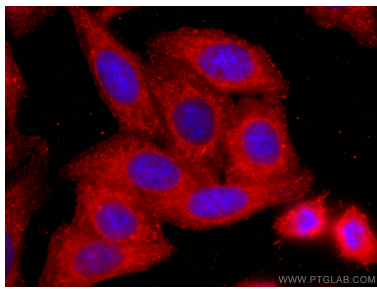
Selected Validation Data



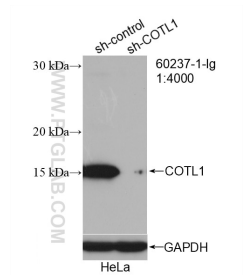
A431 cells were subjected to SDS PAGE followed by western blot with 60237-1-Ig (COTL1 antibody) at dilution of 1:5000 incubated at room temperature for 1.5 hours.



Immunohistochemical analysis of paraffin-embedded human lung cancer tissue slide using 60237-1-Ig (COTL1 antibody) at dilution of 1:1000 (under 10x lens). Heat mediated antigen retrieval with Tris-EDTA buffer (pH 9.0).



Immunofluorescent analysis of (-20°C Ethanol) fixed HepG2 cells using COTL1 antibody (60237-1-Ig, Clone: 4A3D9 ) at dilution of 1:400 and CoraLite®594-Conjugated Goat Anti-Mouse IgG(H+L).



WB result of COTL1 antibody (60237-1-Ig; 1:4000; incubated at room temperature for 1.5 hours) with sh-Control and sh-COTL1 transfected HeLa cells.