

For Research Use Only

Cytokeratin 15 Monoclonal antibody

Catalog Number: 60247-1-Ig **2 Publications**



Basic Information

Catalog Number: 60247-1-Ig	GenBank Accession Number: BC002641	Purification Method: Protein G purification
Size: 150ul , Concentration: 1629 ug/ml by Nanodrop and 1000 ug/ml by Bradford method using BSA as the standard;	GeneID (NCBI): 3866	CloneNo.: 6B4F8
Source: Mouse	UNIPROT ID: P19012	Recommended Dilutions: WB 1:500-1:2000 IHC 1:100-1:1000 IF/ICC 1:10-1:100
Isotype: IgG1	Full Name: keratin 15	
Immunogen Catalog Number: AG0185	Calculated MW: 49 kDa	
	Observed MW: 49 kDa	

Applications

Tested Applications: WB, IHC, IF/ICC, ELISA	Positive Controls: WB : A431 cells, IHC : human oesophagus cancer tissue, human skin cancer tissue IF/ICC : HeLa cells,
Cited Applications: IF	
Species Specificity: human, mouse	
Cited Species: mouse	
Note-IHC: suggested antigen retrieval with TE buffer pH 9.0; (*) Alternatively, antigen retrieval may be performed with citrate buffer pH 6.0	

Background Information

Keratins are a large family of proteins that form the intermediate filament cytoskeleton of epithelial cells. Keratin expression is highly regulated, tissue specific, and varies according to cell-state. Type I keratins consist of acidic, low molecular weight proteins with MW ranging from 40 kDa (KRT19) to 64 kDa (KRT9). Type 2 keratins consist of basic or neutral, high molecular weight proteins with MW from 52 kDa (KRT8) to 67 kDa (KRT18). Keratin 15 is a type I cytokeratin. It is found in some progenitor basal cells within complex epithelia.

Notable Publications

Author	Pubmed ID	Journal	Application
Jiali Li	36388171	Oxid Med Cell Longev	IF
Ning Li	39113800	Theranostics	IF

Storage

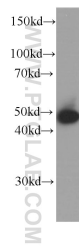
Storage:
Store at -20°C. Stable for one year after shipment.
Storage Buffer:
PBS with 0.02% sodium azide and 50% glycerol, pH7.3
Aliquoting is unnecessary for -20°C storage

*** 20ul sizes contain 0.1% BSA

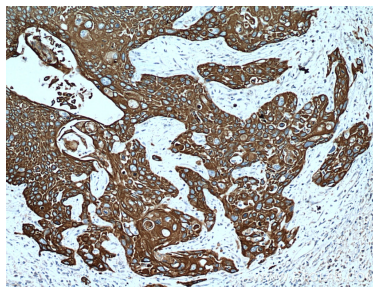
For technical support and original validation data for this product please contact:
T: 1 (888) 4PTGLAB (1-888-478-4522) (toll free in USA), or 1(312) 455-8498 (outside USA)
E: proteintech@ptglab.com
W: ptglab.com

This product is exclusively available under Proteintech Group brand and is not available to purchase from any other manufacturer.

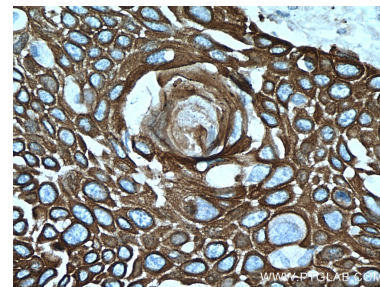
Selected Validation Data



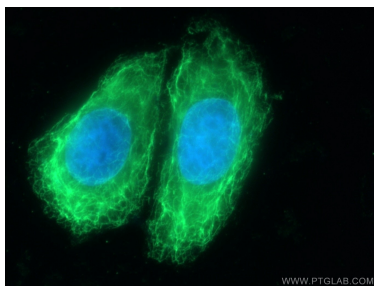
A431 cells were subjected to SDS PAGE followed by western blot with 60247-1-Ig (Cytokeratin 15 antibody) at dilution of 1:1000 incubated at room temperature for 1.5 hours.



Immunohistochemical analysis of paraffin-embedded human oesophagus cancer tissue slide using 60247-1-Ig (Cytokeratin 15 antibody at dilution of 1:500 (under 10x lens).



Immunohistochemical analysis of paraffin-embedded human oesophagus cancer tissue slide using 60247-1-Ig (Cytokeratin 15 antibody at dilution of 1:500 (under 40x lens).



Immunofluorescent analysis of (-20°C Ethanol) fixed HeLa cells using Cytokeratin 15 antibody (60247-1-Ig, Clone: 6B4F8) at dilution of 1:25 and CoraLite488-Conjugated AffiniPure Goat Anti-Mouse IgG(H+L).