

For Research Use Only

PGRMC2 Monoclonal antibody

Catalog Number: 60249-1-Ig

Featured Product

4 Publications



Basic Information

Catalog Number:

60249-1-Ig

Size:

150ul, Concentration: 1500 ug/ml by Bradford method using BSA as the standard;

Source:

Mouse

Isotype:

IgG2a

Immunogen Catalog Number:

AG20077

GenBank Accession Number:

BC016692

GeneID (NCBI):

10424

UNIPROT ID:

O15173

Full Name:

progesterone receptor membrane component 2

Calculated MW:

223 aa, 24 kDa

Observed MW:

24+28 kDa

Purification Method:

Protein A purification

CloneNo.:

5F10D7

Recommended Dilutions:

WB 1:2000-1:10000

IHC 1:50-1:500

IF-P 1:200-1:800

Applications

Tested Applications:

WB, IHC, IF-P, FC (Intra), ELISA

Cited Applications:

WB, IF

Species Specificity:

human, pig

Cited Species:

human, mouse

Note-IHC: suggested antigen retrieval with TE buffer pH 9.0; (*) Alternatively, antigen retrieval may be performed with citrate buffer pH 6.0

Positive Controls:

WB : A549 cells, LNCaP cells, HeLa cells, MCF-7 cells, MDA-MB-231 cells, HepG2 cells, pig liver tissue

IHC : human cervical cancer tissue,

IF-P : human cervical cancer tissue,

Background Information

Membrane-associated progesterone receptor component 2 (PGRMC2), also known as DG6 or PMBP, belongs to the cytochrome b5 family. This protein might play a role in cancer. The gene of PGRMC2 maps to chromosome 4q26, and encodes a 223-amino acid single-pass membrane protein with a cytochrome b5 heme-binding domain in its cytoplasmic domain. PGRMC2 has a calculated molecular weight of 24 kDa. The band of about 28 kDa detected by this monoclonal antibody is unknown but may represent phosphorylated form of PGRMC2 (PMID: 28104494).

Notable Publications

Author	Pubmed ID	Journal	Application
Xiaojuan Ye	26884854	Int J Clin Exp Pathol	WB
Nikita Sergejevs	39513424	J Cell Sci	WB
Xiaoyan Yang	39346797	Ibrain	WB,IF

Storage

Storage:

Store at -20°C. Stable for one year after shipment.

Storage Buffer:

PBS with 0.02% sodium azide and 50% glycerol pH 7.3.

Aliquoting is unnecessary for -20°C storage

*** 20ul sizes contain 0.1% BSA

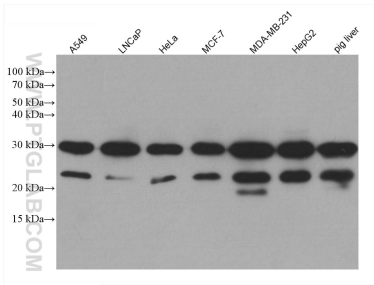
For technical support and original validation data for this product please contact:

T: 1 (888) 4PTGLAB (1-888-478-4522) (toll free in USA), or 1(312) 455-8498 (outside USA)

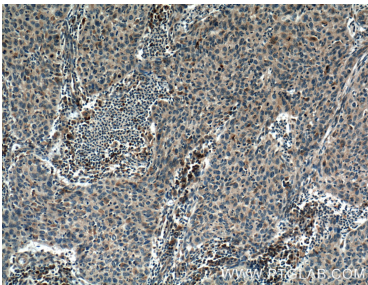
E: proteintech@ptglab.com
W: ptglab.com

This product is exclusively available under Proteintech Group brand and is not available to purchase from any other manufacturer.

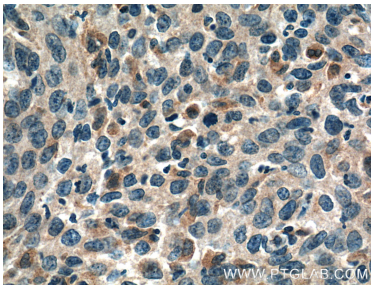
Selected Validation Data



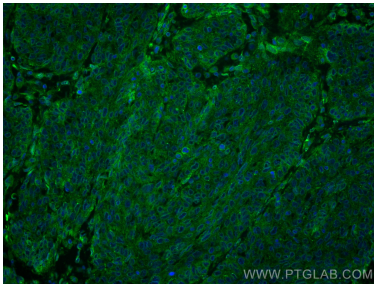
Various lysates were subjected to SDS PAGE followed by western blot with 60249-1-Ig (PGRMC2 antibody) at dilution of 1:5000 incubated at room temperature for 1.5 hours.



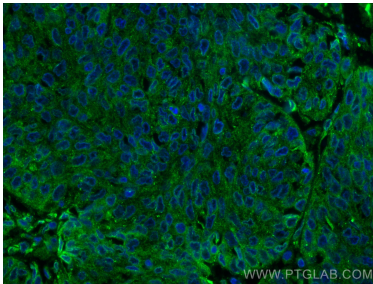
Immunohistochemical analysis of paraffin-embedded human cervical cancer tissue slide using 60249-1-Ig (PGRMC2 Antibody) at dilution of 1:400 (under 10x lens). Heat mediated antigen retrieval with Tris-EDTA buffer (pH 9.0).



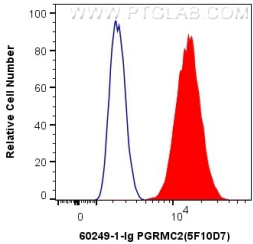
Immunohistochemical analysis of paraffin-embedded human cervical cancer tissue slide using 60249-1-Ig (PGRMC2 Antibody) at dilution of 1:400 (under 40x lens). Heat mediated antigen retrieval with Tris-EDTA buffer (pH 9.0).



Immunofluorescent analysis of (4% PFA) fixed human cervical cancer tissue using PGRMC2 antibody (60249-1-Ig, Clone: 5F10D7) at dilution of 1:400 and CoraLite®488-Conjugated Goat Anti-Mouse IgG(H+L).



Immunofluorescent analysis of (4% PFA) fixed human cervical cancer tissue using PGRMC2 antibody (60249-1-Ig, Clone: 5F10D7) at dilution of 1:400 and CoraLite®488-Conjugated Goat Anti-Mouse IgG(H+L).



1X10⁶ HepG2 cells were intracellularly stained with 0.4 ug Anti-Human PGRMC2 (60249-1-Ig, Clone:5F10D7) and CoraLite®488-Conjugated Goat Anti-Mouse IgG(H+L) at dilution 1:1000 (red), or 0.4 ug Mouse IgG2a Isotype Control (66360-2-Ig, Clone: K11A1B2A2) (blue). Cells were fixed with 4% PFA and permeabilized with Flow Cytometry Perm Buffer (PF00011-C).