

For Research Use Only

MAPK13 Monoclonal antibody

Catalog Number: 60252-1-Ig

Featured Product



Basic Information

Catalog Number:

60252-1-Ig

Size:

150ul, Concentration: 1300 ug/ml by 5603
Nanodrop and 1000 ug/ml by Bradford
method using BSA as the standard;

Source:

Mouse

Isotype:

IgG1

Immunogen Catalog Number:

AG21240

GenBank Accession Number:

BC000433

GeneID (NCBI):

5603

UNIPROT ID:

O15264

Full Name:

mitogen-activated protein kinase 13

Calculated MW:

38 kDa

Observed MW:

38-42 kDa

Purification Method:

Protein G purification

CloneNo.:

1B12A6

Recommended Dilutions:

WB 1:1000-1:6000

IHC 1:150-1:600

Applications

Tested Applications:

WB, IHC, ELISA

Species Specificity:

human

**Note-IHC: suggested antigen retrieval with
TE buffer pH 9.0; (*) Alternatively, antigen
retrieval may be performed with citrate
buffer pH 6.0**

Positive Controls:

WB : Ramos cells, HepG2 cells, Daudi cells, HEK-293
cells

IHC : human pancreas cancer tissue,

Background Information

MAPK13(Mitogen-activated protein kinase 13) is also named as PRKM13, SAPK4 and belongs to the protein kinase superfamily. MAPK13 is one of the four p38 MAPKs which play an important role in the cascades of cellular responses evoked by extracellular stimuli such as proinflammatory cytokines or physical stress leading to direct activation of transcription factors such as ELK1 and ATF2.

Storage

Storage:

Store at -20°C. Stable for one year after shipment.

Storage Buffer:

PBS with 0.02% sodium azide and 50% glycerol pH 7.3.

Aliquoting is unnecessary for -20°C storage

*** 20ul sizes contain 0.1% BSA

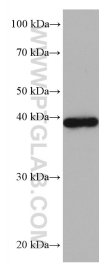
For technical support and original validation data for this product please contact:

T: 1 (888) 4PTGLAB (1-888-478-4522) (toll free
in USA), or 1(312) 455-8498 (outside USA)

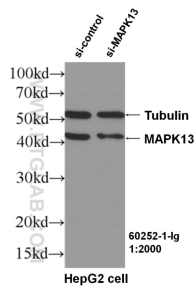
E: proteintech@ptglab.com
W: ptglab.com

This product is exclusively available under Proteintech
Group brand and is not available to purchase from any
other manufacturer.

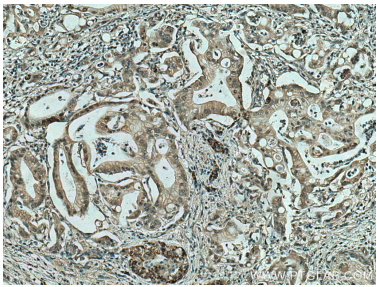
Selected Validation Data



Ramos cells were subjected to SDS PAGE followed by western blot with 60252-1-Ig (MAPK13 antibody) at dilution of 1:3000 incubated at room temperature for 1.5 hours.



WB result of MAPK13 antibody (60252-1-Ig, 1:2000) with si-Control and si-MAPK13 transfected HepG2 cells.



Immunohistochemical analysis of paraffin-embedded human pancreas cancer tissue slide using 60252-1-Ig (MAPK13 antibody) at dilution of 1:300 (under 10x lens). Heat mediated antigen retrieval with Tris-EDTA buffer (pH 9.0).