

For Research Use Only

IGBP1 Monoclonal antibody

Catalog Number: 60256-1-Ig



Basic Information

Catalog Number:	60256-1-Ig	GenBank Accession Number:	BC004137	Purification Method:	Protein G purification
Size:	150ul , Concentration: 1800 ug/ml by Nanodrop and 1100 ug/ml by Bradford method using BSA as the standard;	GeneID (NCBI):	3476	CloneNo.:	2D11A8
Source:	Mouse	UNIPROT ID:	P78318	Recommended Dilutions:	WB 1:500-1:2000 IHC 1:50-1:500
Isotype:	IgG1	Full Name:	immunoglobulin (CD79A) binding protein 1		
Immunogen Catalog Number:	AG6782	Calculated MW:	39 kDa		
		Observed MW:	40 kDa		

Applications

Tested Applications:	WB, IHC, ELISA	Positive Controls:	
Species Specificity:	human, mouse	WB :	K-562 cells,
		IHC :	human heart tissue, human skeletal muscle tissue
Note-IHC: suggested antigen retrieval with TE buffer pH 9.0; (*) Alternatively, antigen retrieval may be performed with citrate buffer pH 6.0			

Background Information

Immunoglobulin-binding protein 1 (IGBP1), also known as ALPHA-4, was originally identified as a signal transduction molecule coprecipitating with MB1 (CD79a) protein of the B-cell antigen receptor (BCR) complex. IGBP1 has been characterized as an essential regulator of the catalytic activity of protein phosphatase 2A (PP2A), which is a ubiquitous phosphatase with broad substrate specificity and diverse cellular functions.

Storage

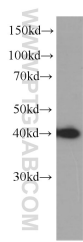
Storage:
Store at -20°C. Stable for one year after shipment.
Storage Buffer:
PBS with 0.02% sodium azide and 50% glycerol pH 7.3.
Aliquoting is unnecessary for -20°C storage

*** 20ul sizes contain 0.1% BSA

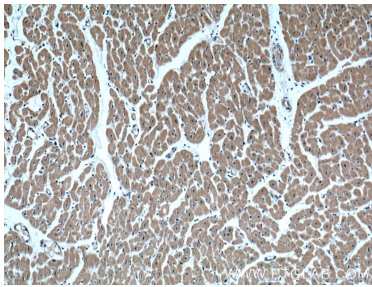
For technical support and original validation data for this product please contact:
T: 1 (888) 4PTGLAB (1-888-478-4522) (toll free in USA), or 1(312) 455-8498 (outside USA)
E: proteintech@ptglab.com
W: ptglab.com

This product is exclusively available under Proteintech Group brand and is not available to purchase from any other manufacturer.

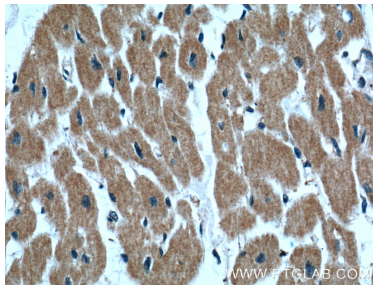
Selected Validation Data



K-562 cells were subjected to SDS PAGE followed by western blot with 60256-1-Ig (IGBP1 antibody) at dilution of 1:1000 incubated at room temperature for 1.5 hours.



Immunohistochemical analysis of paraffin-embedded human heart tissue slide using 60256-1-Ig (IGBP1 Antibody) at dilution of 1:200 (under 10x lens).



Immunohistochemical analysis of paraffin-embedded human heart tissue slide using 60256-1-Ig (IGBP1 Antibody) at dilution of 1:200 (under 40x lens).