

For Research Use Only

IL-1R2 Monoclonal antibody

Catalog Number: 60262-1-Ig

Featured Product

6 Publications



Basic Information

Catalog Number:

60262-1-Ig

Size:

150ul, Concentration: 3200 ug/ml by Nanodrop and 2000 ug/ml by Bradford method using BSA as the standard;

Source:

Mouse

Isotype:

IgG2a

Immunogen Catalog Number:

AG4495

GenBank Accession Number:

BC039031

GeneID (NCBI):

7850

UNIPROT ID:

P27930

Full Name:

interleukin 1 receptor, type II

Calculated MW:

398 aa, 45 kDa

Observed MW:

45 kDa

Purification Method:

Protein A purification

CloneNo.:

3H4H4

Recommended Dilutions:

WB 1:500-1:2000

IF/ICC 1:20-1:200

Applications

Tested Applications:

WB, IF/ICC, ELISA

Cited Applications:

WB, IF

Species Specificity:

human, mouse

Cited Species:

human, mouse, rat

Positive Controls:

WB : HeLa cells,

IF/ICC : HeLa cells,

Background Information

Interleukin-1 receptor type 2 (IL1R2, also known as CD121b) is a cytokine receptor that belongs to the interleukin 1 receptor family. It exists in both a membrane bound and soluble form. IL1R2 binds interleukin alpha (IL1A), interleukin beta (IL1B), and interleukin 1 receptor, type I (IL1R1/IL1RA), and acts as a decoy receptor that inhibits the activity of its ligands. IL1R2 serves as a negative regulator of IL-1 signaling, thereby suppressing inflammatory response.

Notable Publications

Author	Pubmed ID	Journal	Application
Yilin Liu	38899740	Biomacromolecules	WB
Chengcheng Wang	38883575	J Pancreatol	WB
Cheng Gao	38184609	Nat Commun	WB

Storage

Storage:

Store at -20°C. Stable for one year after shipment.

Storage Buffer:

PBS with 0.02% sodium azide and 50% glycerol pH 7.3.

Aliquoting is unnecessary for -20°C storage

*** 20ul sizes contain 0.1% BSA

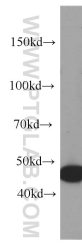
For technical support and original validation data for this product please contact:

T: 1 (888) 4PTGLAB (1-888-478-4522) (toll free in USA), or 1(312) 455-8498 (outside USA)

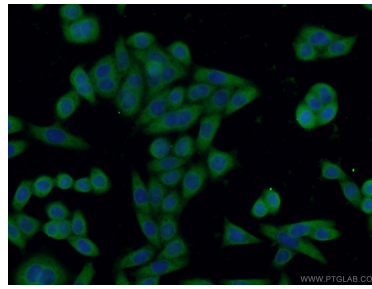
E: proteintech@ptglab.com
W: ptglab.com

This product is exclusively available under Proteintech Group brand and is not available to purchase from any other manufacturer.

Selected Validation Data



HeLa cells were subjected to SDS PAGE followed by western blot with 60262-1-Ig (IL1R2 antibody) at dilution of 1:1000 incubated at room temperature for 1.5 hours.



Immunofluorescent analysis of HeLa cells using 60262-1-Ig (IL1R2 antibody) at dilution of 1:50 and Alexa Fluor 488-conjugated AffiniPure Goat Anti-Mouse IgG (H+L).