

For Research Use Only

MEST Monoclonal antibody

Catalog Number: 60263-1-Ig



Basic Information

| | | |
|--|---|---|
| Catalog Number: 60263-1-Ig | GenBank Accession Number: BC011908 | Purification Method: Protein A purification |
| Size: 150ul , Concentration: 3000 ug/ml by Nanodrop and 2000 ug/ml by Bradford method using BSA as the standard; | GeneID (NCBI): 4232 | CloneNo.: 1A4A1 |
| Source: Mouse | UNIPROT ID: Q5EB52 | Recommended Dilutions: WB 1:500-1:2000 IHC 1:50-1:500 IF/ICC 1:50-1:500 |
| Isotype: IgG2a | Full Name: mesoderm specific transcript homolog (mouse) | |
| Immunogen Catalog Number: AG11929 | Calculated MW: 38 kDa | |
| | Observed MW: 34 kDa | |

Applications

| | |
|--|--|
| Tested Applications: WB, IHC, IF/ICC, ELISA | Positive Controls: |
| Species Specificity: human | WB : PC-3 cells, |
| Note-IHC: suggested antigen retrieval with TE buffer pH 9.0; (*) Alternatively, antigen retrieval may be performed with citrate buffer pH 6.0 | IHC : human prostate cancer tissue, |
| | IF/ICC : BxPC-3 cells, |

Background Information

MEST(Mesoderm-specific transcript homolog protein) is also named as PEG1 and belongs to the AB hydrolase superfamily. The gene is a imprinting gene, which is associated with growth of mesodermal origin cells(PMID:20339302) and plays important roles in embryo development(PMID:21375506). It is also a novel regulator of Wnt/CTNNB signalling during adipogenic differentiation(PMID:21375506). It has 3 isoforms produced by alternative splicing and the full length protein has a glycosylation site.

Storage

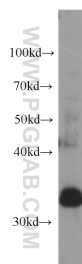
Storage:
Store at -20°C. Stable for one year after shipment.
Storage Buffer:
PBS with 0.02% sodium azide and 50% glycerol pH 7.3.
Aliquoting is unnecessary for -20°C storage

*** 20ul sizes contain 0.1% BSA

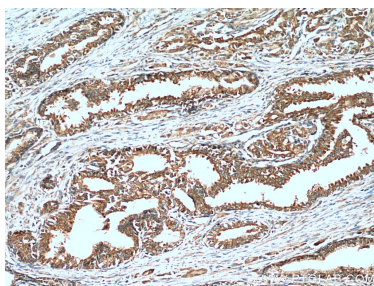
For technical support and original validation data for this product please contact:
T: 1 (888) 4PTGLAB (1-888-478-4522) (toll free in USA), or 1(312) 455-8498 (outside USA)
E: proteintech@ptglab.com
W: ptglab.com

This product is exclusively available under Proteintech Group brand and is not available to purchase from any other manufacturer.

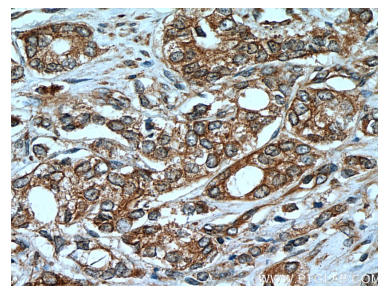
Selected Validation Data



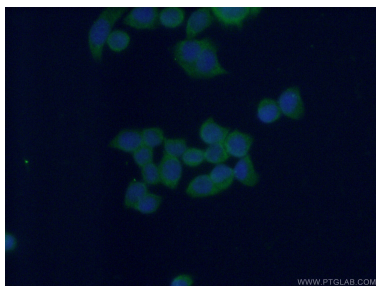
PC-3 cells were subjected to SDS PAGE followed by western blot with 60263-1-Ig (MEST antibody) at dilution of 1:1000 incubated at room temperature for 1.5 hours.



Immunohistochemical analysis of paraffin-embedded human prostate cancer tissue slide using 60263-1-Ig (MEST Antibody) at dilution of 1:400 (under 10x lens).



Immunohistochemical analysis of paraffin-embedded human prostate cancer tissue slide using 60263-1-Ig (MEST Antibody) at dilution of 1:400 (under 40x lens).



Immunofluorescent analysis of (-20°C Ethanol) fixed BxPC-3 cells using 60263-1-Ig(MEST antibody) at dilution of 1:100 and Alexa Fluor 488-conjugated AffiniPure Goat Anti-Mouse IgG(H+L).