

For Research Use Only

# CCT3 Monoclonal antibody

Catalog Number: 60264-1-Ig **1 Publications**



## Basic Information

<b>Catalog Number:</b> 60264-1-Ig	<b>GenBank Accession Number:</b> BC006501	<b>Purification Method:</b> Protein A purification
<b>Size:</b> 150ul , Concentration: 1800 ug/ml by Nanodrop and 847 ug/ml by Bradford method using BSA as the standard;	<b>GeneID (NCBI):</b> 7203	<b>CloneNo.:</b> 5F5A6
<b>Source:</b> Mouse	<b>UNIPROT ID:</b> P49368	<b>Recommended Dilutions:</b> WB 1:500-1:2000 IF/ICC 1:400-1:1600
<b>Isotype:</b> IgG2b	<b>Full Name:</b> chaperonin containing TCP1, subunit 3 (gamma)	
<b>Immunogen Catalog Number:</b> AG0843	<b>Calculated MW:</b> 60 kDa	
	<b>Observed MW:</b> 56-60 kDa	

## Applications

<b>Tested Applications:</b> WB, IF/ICC, ELISA	<b>Positive Controls:</b>
<b>Cited Applications:</b> WB, IF, ColP	<b>WB :</b> COLO 320 cells,
<b>Species Specificity:</b> human, mouse	<b>IF/ICC :</b> HepG2 cells,
<b>Cited Species:</b> human, mouse	

## Notable Publications

Author	Pubmed ID	Journal	Application
Joshua Linnert	37427378	Front Cell Dev Biol	WB,IF,ColP

## Storage

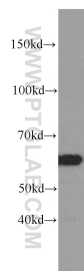
**Storage:**  
Store at -20°C. Stable for one year after shipment.  
**Storage Buffer:**  
PBS with 0.02% sodium azide and 50% glycerol pH 7.3.  
**Aliquoting is unnecessary for -20°C storage**

\*\*\* 20ul sizes contain 0.1% BSA

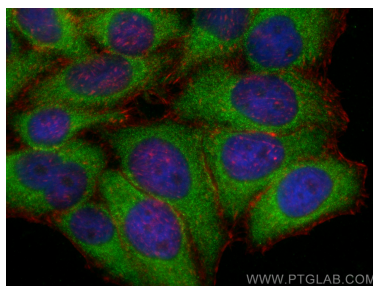
For technical support and original validation data for this product please contact:  
T: 1 (888) 4PTGLAB (1-888-478-4522) (toll free in USA), or 1(312) 455-8498 (outside USA)  
E: [proteintech@ptglab.com](mailto:proteintech@ptglab.com)  
W: [ptglab.com](http://ptglab.com)

This product is exclusively available under Proteintech Group brand and is not available to purchase from any other manufacturer.

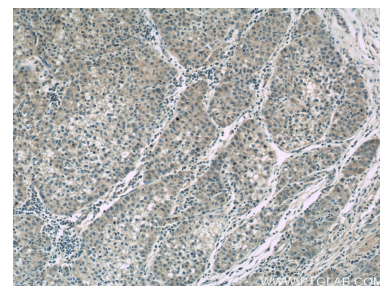
## Selected Validation Data



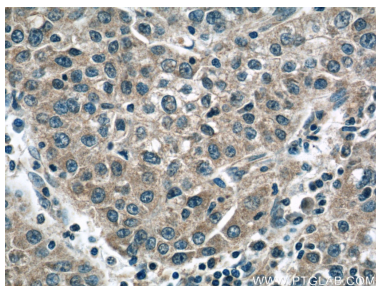
COLO 320 cells were subjected to SDS PAGE followed by western blot with 60264-1-Ig (CCT3 antibody) at dilution of 1:1000 incubated at room temperature for 1.5 hours.



Immunofluorescent analysis of (-20°C Ethanol) fixed HepG2 cells using CCT3 antibody (60264-1-Ig, Clone: 5F5A6 ) at dilution of 1:800 and CoraLite®488-Conjugated AffiniPure Goat Anti-Mouse IgG(H+L), CL594-Phalloidin (red).



Immunohistochemical analysis of paraffin-embedded human liver cancer tissue slide using 60264-1-Ig (CCT3 Antibody) at dilution of 1:50.



Immunohistochemical analysis of paraffin-embedded human liver cancer tissue slide using 60264-1-Ig (CCT3 Antibody) at dilution of 1:50.