

For Research Use Only

Thyroglobulin Monoclonal antibody

Catalog Number: 60272-1-Ig **4 Publications**



Basic Information

Catalog Number: 60272-1-Ig	GenBank Accession Number: BC140933	Purification Method: Protein A purification
Size: 150ul , Concentration: 2900 ug/ml by Nanodrop and 1627 ug/ml by Bradford method using BSA as the standard;	GeneID (NCBI): 7038	CloneNo.: 4D3C5
Source: Mouse	UNIPROT ID: P01266	Recommended Dilutions: IHC 1:50-1:500 IF-P 1:200-1:800
Isotype: IgG2a	Full Name: thyroglobulin	
Immunogen Catalog Number: AG18070	Calculated MW: 2768 aa, 305 kDa	

Applications

Tested Applications: IHC, IF-P, ELISA	Positive Controls:
Cited Applications: IHC, IF	IHC : human thyroid tissue, human thyroid cancer tissue
Species Specificity: human	IF-P : human thyroid cancer tissue,
Cited Species: human, mouse	
Note-IHC: suggested antigen retrieval with TE buffer pH 9.0; (*) Alternatively, antigen retrieval may be performed with citrate buffer pH 6.0	

Background Information

Thyroglobulin (Tg) is a glycoprotein homodimer produced predominantly by the thyroid gland. It acts as a substrate for the synthesis of thyroxine and triiodothyronine as well as the storage of the inactive forms of thyroid hormone and iodine. Thyroglobulin is secreted from the endoplasmic reticulum to its site of iodination, and subsequent thyroxine biosynthesis, in the follicular lumen. Mutations in this gene cause thyroid dysmorphogenesis, manifested as goiter, and are associated with moderate to severe congenital hypothyroidism. Polymorphisms in this gene are associated with susceptibility to autoimmune thyroid diseases (AITD) such as Graves disease and Hashimoto thyroiditis.

Notable Publications

Author	Pubmed ID	Journal	Application
Hui Xiao	34925365	Front Immunol	IF
Xuemin Wang	33892730	Cancer Cell Int	IHC
Lingyang Meng	39468764	J Clin Endocrinol Metab	IF

Storage

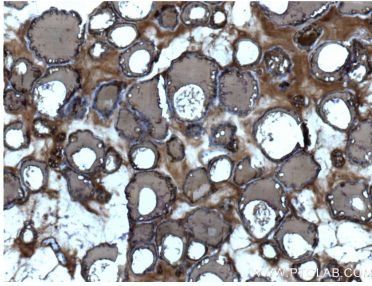
Storage:
Store at -20°C. Stable for one year after shipment.
Storage Buffer:
PBS with 0.02% sodium azide and 50% glycerol pH 7.3.
Aliquoting is unnecessary for -20°C storage

*** 20ul sizes contain 0.1% BSA

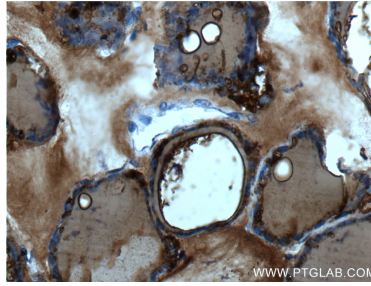
For technical support and original validation data for this product please contact:
T: 1 (888) 4PTGLAB (1-888-478-4522) (toll free in USA), or 1(312) 455-8498 (outside USA)
E: proteintech@ptglab.com
W: ptglab.com

This product is exclusively available under Proteintech Group brand and is not available to purchase from any other manufacturer.

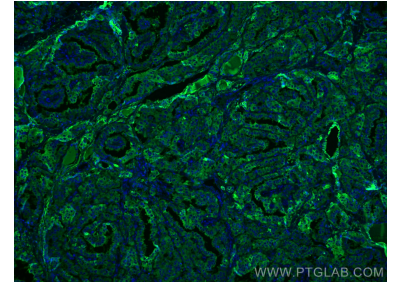
Selected Validation Data



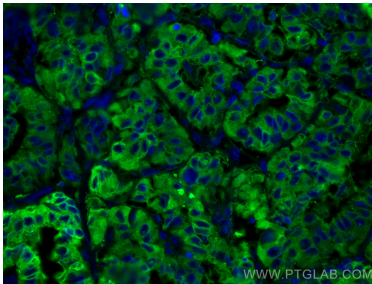
Immunohistochemical analysis of paraffin-embedded human thyroid tissue slide using 60272-1-Ig (Thyroglobulin antibody at dilution of 1:200 (under 10x lens).



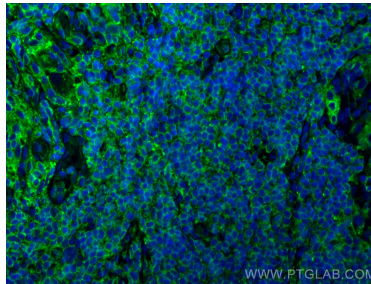
Immunohistochemical analysis of paraffin-embedded human thyroid tissue slide using 60272-1-Ig (Thyroglobulin antibody at dilution of 1:200 (under 40x lens).



Immunofluorescent analysis of (4% PFA) fixed human thyroid cancer tissue using Thyroglobulin antibody (60272-1-Ig, Clone: 4D3C5) at dilution of 1:400 and CoraLite®488-Conjugated Goat Anti-Mouse IgG(H+L).



Immunofluorescent analysis of (4% PFA) fixed human thyroid cancer tissue using Thyroglobulin antibody (60272-1-Ig, Clone: 4D3C5) at dilution of 1:400 and CoraLite®488-Conjugated Goat Anti-Mouse IgG(H+L).



Immunofluorescent analysis of (4% PFA) fixed paraffin-embedded human thyroid cancer tissue using Thyroglobulin antibody (60272-1-Ig, Clone: 4D3C5) at dilution of 1:400 and Multi-rAb CoraLite® Plus 488-Goat Anti-Mouse Recombinant Secondary Antibody (H+L) (RGAM002). Heat mediated antigen retrieval with Tris-EDTA buffer (pH 9.0).