

For Research Use Only

# CRYBB1 Monoclonal antibody

Catalog Number: 60273-1-Ig



## Basic Information

Catalog Number:

60273-1-Ig

Size:

150ul , Concentration: 600 ug/ml by Nanodrop and 580 ug/ml by Bradford method using BSA as the standard;

Source:

Mouse

Isotype:

IgG1

Immunogen Catalog Number:

AG4722

GenBank Accession Number:

BC036790

GeneID (NCBI):

1414

UNIPROT ID:

P53674

Full Name:

crystallin, beta B1

Calculated MW:

252 aa, 28 kDa

Observed MW:

30 kDa

Purification Method:

Protein A purification

CloneNo.:

6F12B12

Recommended Dilutions:

WB 1:500-1:2000

IF/ICC 1:300-1:1200

## Applications

Tested Applications:

WB, IF/ICC, ELISA

Species Specificity:

human, mouse, rat

Positive Controls:

WB : C6 cells, mouse eye tissue

IF/ICC : hTERT-RPE1 cells,

## Background Information

Mutation in CRYBB1 is associated with congenital Cataract-Microcornea Syndrome.

## Storage

Storage:

Store at -20°C. Stable for one year after shipment.

Storage Buffer:

PBS with 0.02% sodium azide and 50% glycerol pH 7.3.

Aliquoting is unnecessary for -20°C storage

\*\*\* 20ul sizes contain 0.1% BSA

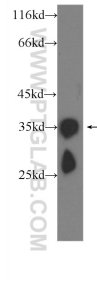
For technical support and original validation data for this product please contact:

T: 1 (888) 4PTGLAB (1-888-478-4522) (toll free in USA), or 1(312) 455-8498 (outside USA)

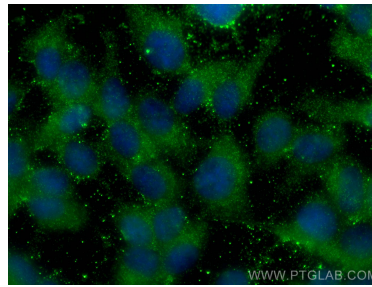
E: [proteintech@ptglab.com](mailto:proteintech@ptglab.com)  
W: [ptglab.com](http://ptglab.com)

This product is exclusively available under Proteintech Group brand and is not available to purchase from any other manufacturer.

## Selected Validation Data



C6 cells were subjected to SDS PAGE followed by western blot with 60273-1-Ig (CRYBB1 Antibody) at dilution of 1:1000 incubated at room temperature for 1.5 hours.



Immunofluorescent analysis of (-20°C Methanol) fixed hTERT-RPE1 cells using CRYBB1 antibody (60273-1-Ig, Clone: 6F12B12 ) at dilution of 1:600 and CoraLite®488-Conjugated Goat Anti-Mouse IgG(H+L).