

For Research Use Only

Chk1 Monoclonal antibody

Catalog Number: 60277-1-Ig **5 Publications**



Basic Information

Catalog Number: 60277-1-Ig	GenBank Accession Number: BC004202	Purification Method: Protein A purification
Size: 150ul, Concentration: 2100 µg/ml by Nanodrop and 1200 µg/ml by Bradford method using BSA as the standard;	GeneID (NCBI): 1111	CloneNo.: 3A3A5
Source: Mouse	Full Name: CHK1 checkpoint homolog (S. pombe)	Recommended Dilutions: WB 1:1000-1:3000 IHC 1:250-1:1000
Isotype: IgG2b	Calculated MW: 54 kDa	
Immunogen Catalog Number: AG0409	Observed MW: 50 kDa	

Applications

Tested Applications:
IHC, WB, ELISA

Cited Applications:
WB

Species Specificity:
human, mouse, rat

Cited Species:
human, mouse

Note-IHC: suggested antigen retrieval with TE buffer pH 9.0; (*) Alternatively, antigen retrieval may be performed with citrate buffer pH 6.0

Positive Controls:

WB : HeLa cells, NIH/3T3 cells, HEK-293 cells, Jurkat cells, K-562 cells

IHC : human breast cancer tissue,

Background Information

CHEK1(Checkpoint kinase-1) is also named as CHK1 and belongs to the protein kinase superfamily. It is implicated in a circuit in which it activates checkpoints, DNA repair and proliferating cell nuclear antigen and FANCD2 monoubiquitylation(PMID:21389083). CHEK1 protects vertebrate cells against spontaneous chromosome missegregation and is required to sustain anaphase delay when spindle function is disrupted by taxol(PMID:17276342). It has 3 isoforms produced by alternative splicing with the molecular mass of 54 kDa, 44 kDa and 50 kDa.

Notable Publications

Author	Pubmed ID	Journal	Application
Ping Li	34285189	Cell Death Discov	WB
Xinxin Zuo	33398173	Nat Struct Mol Biol	WB
Dandan Lin	37992763	Antiviral Res	WB

Storage

Storage:

Store at -20°C. Stable for one year after shipment.

Storage Buffer:

PBS with 0.02% sodium azide and 50% glycerol pH 7.3.

Aliquoting is unnecessary for -20°C storage

*** 20ul sizes contain 0.1% BSA

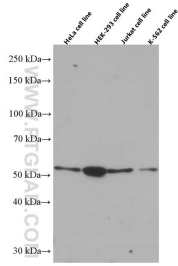
For technical support and original validation data for this product please contact:

T: 1 (888) 4PTGLAB (1-888-478-4522) (toll free in USA), or 1(312) 455-8498 (outside USA)

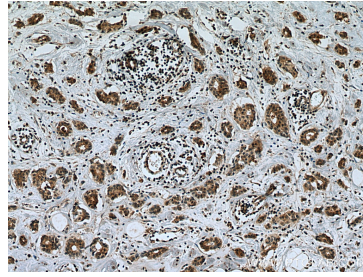
E: proteintech@ptglab.com
W: ptglab.com

This product is exclusively available under Proteintech Group brand and is not available to purchase from any other manufacturer.

Selected Validation Data



Various lysates were subjected to SDS PAGE followed by western blot with 60277-1-Ig (Chk1 antibody) at dilution of 1:3000 incubated at room temperature for 1.5 hours.



Immunohistochemical analysis of paraffin-embedded human breast cancer tissue slide using 60277-1-Ig (Chk1 antibody) at dilution of 1:500 (under 10x lens). Heat mediated antigen retrieval with Tris-EDTA buffer (pH 9.0).