

For Research Use Only

ATP5C1 Monoclonal antibody

Catalog Number: 60284-1-Ig **4 Publications**



Basic Information

Catalog Number: 60284-1-Ig	GenBank Accession Number: BC000931	Purification Method: Protein A purification
Size: 150ul , Concentration: 1200 ug/ml by Nanodrop and 767 ug/ml by Bradford method using BSA as the standard;	GeneID (NCBI): 509	CloneNo.: 1B5A2
Source: Mouse	UNIPROT ID: P36542	Recommended Dilutions: WB 1:500-1:2000 IHC 1:100-1:400 IF/ICC 1:50-1:500
Isotype: IgG2a	Full Name: ATP synthase, H ⁺ transporting, mitochondrial F1 complex, gamma polypeptide 1	
Immunogen Catalog Number: AG1343	Calculated MW: 33 kDa	
	Observed MW: 33 kDa	

Applications

Tested Applications: WB, IHC, IF/ICC, FC (Intra), ELISA	Positive Controls: WB : human heart tissue, fetal human brain tissue IHC : human liver cancer tissue, IF/ICC : HepG2 cells,
Cited Applications: WB	
Species Specificity: human	
Cited Species: human, zebrafish	
Note-IHC: suggested antigen retrieval with TE buffer pH 9.0; (*) Alternatively, antigen retrieval may be performed with citrate buffer pH 6.0	

Background Information

ATP5C1(ATP synthase subunit gamma, mitochondrial) is also named as ATP5C, ATP5CL1 and belongs to the ATPase gamma chain family. Some scientists reported the complete sequence of the gene for the human ATP synthase gamma subunit and described tissue-specific isoforms of the subunit generated by alternative splicing of exon 9. The liver (L) isoform differed from the heart (H) isoform by the addition of a single amino acid (asp273) at the C terminus. (PMID:8227057).

Notable Publications

Author	Pubmed ID	Journal	Application
Zhenhong Ni	29165041	Autophagy	WB
Danni Chen	30916346	Nucleic Acids Res	WB
Qinghai Zhang	33836087	Nucleic Acids Res	WB

Storage

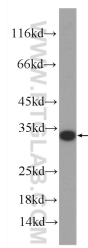
Storage:
Store at -20°C. Stable for one year after shipment.
Storage Buffer:
PBS with 0.02% sodium azide and 50% glycerol pH 7.3.
Aliquoting is unnecessary for -20°C storage

*** 20ul sizes contain 0.1% BSA

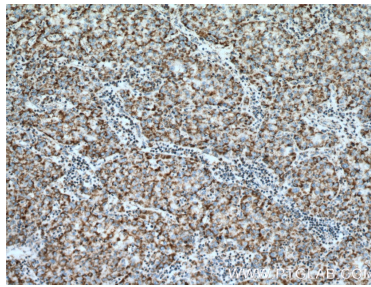
For technical support and original validation data for this product please contact:
T: 1 (888) 4PTGLAB (1-888-478-4522) (toll free in USA), or 1(312) 455-8498 (outside USA)
E: proteintech@ptglab.com
W: ptglab.com

This product is exclusively available under Proteintech Group brand and is not available to purchase from any other manufacturer.

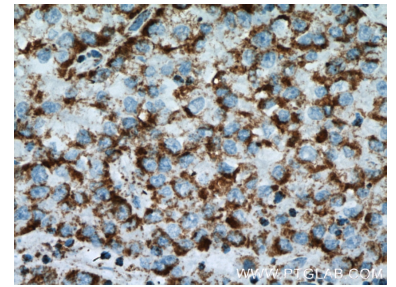
Selected Validation Data



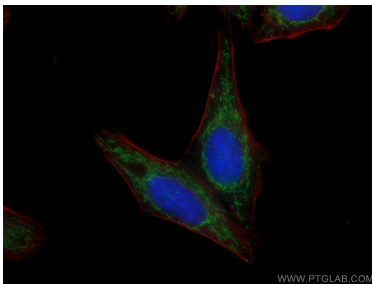
human heart tissue were subjected to SDS PAGE followed by western blot with 60284-1-Ig (ATP5C1 Antibody) at dilution of 1:1000 incubated at room temperature for 1.5 hours.



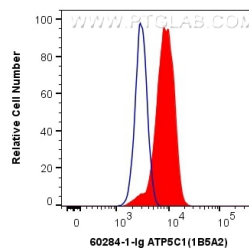
Immunohistochemical analysis of paraffin-embedded human liver cancer tissue slide using 60284-1-Ig (ATP5C1 Antibody) at dilution of 1:200 (under 10x lens). Heat mediated antigen retrieval with Tris-EDTA buffer (pH 9.0).



Immunohistochemical analysis of paraffin-embedded human liver cancer tissue slide using 60284-1-Ig (ATP5C1 Antibody) at dilution of 1:200 (under 40x lens). Heat mediated antigen retrieval with Tris-EDTA buffer (pH 9.0).



Immunofluorescent analysis of (4% PFA) fixed HepG2 cells using 60284-1-Ig (ATP5C1 antibody), at dilution of 1:100 and CoraLite®488-Conjugated Goat Anti-Mouse IgG(H+L).



1X10⁶ HeLa cells were intracellularly stained with 0.4 ug Anti-Human ATP5C1 (60284-1-Ig, Clone:1B5A2) and CoraLite®488-Conjugated Goat Anti-Mouse IgG(H+L) at dilution 1:1000 (red), or 0.4 ug Isotype Control. Cells were fixed with 4% PFA and permeabilized with Flow Cytometry Perm Buffer (PF00011-C).