

For Research Use Only

RBM4 Monoclonal antibody

Catalog Number: 60292-1-Ig **Featured Product**



Basic Information

Catalog Number: 60292-1-Ig	GenBank Accession Number: BC021120	Purification Method: Protein A purification
Size: 150ul , Concentration: 2300 µg/ml by Nanodrop and 1453 µg/ml by Bradford method using BSA as the standard;	GeneID (NCBI): 5936	CloneNo.: 3H3F12
Source: Mouse	Full Name: RNA binding motif protein 4	Recommended Dilutions: WB 1:5000-1:50000 IHC 1:20-1:200 IF 1:50-1:500
Isotype: IgG2a	Calculated MW: 40 kDa	
Immunogen Catalog Number: AG2190	Observed MW: 40 kDa	

Applications

Tested Applications:

IF, IHC, WB, ELISA

Species Specificity:

human

Note-IHC: suggested antigen retrieval with TE buffer pH 9.0; (*) Alternatively, antigen retrieval may be performed with citrate buffer pH 6.0

Positive Controls:

WB : MCF-7 cells, fetal human brain tissue, HeLa cells, HepG2 cells, Jurkat cells, K-562 cells

IHC : human cervical cancer tissue, human stomach tissue

IF : HeLa cells,

Background Information

RBM4, RNA-binding motif protein4, contains 2 RRM-type RNA-binding motif and a retroviral-type(RT) zinc finger. RNA-binding factor participates in number of aspects of cellular processes such as alternative splicing of pre-mRNA and translation regulation. RBM4 recruits eIF4A1 to stimulate IRES-dependent translation in responds to cellular stress. Once assembled at the rHRE, the HIF2A-RBM4-eIF4E2 complex captures the 5-prime cap and targets mRNAs to polysomes for active translation, thereby evading hypoxia-induced repression of protein synthesis.

Storage

Storage:

Store at -20°C. Stable for one year after shipment.

Storage Buffer:

PBS with 0.02% sodium azide and 50% glycerol pH 7.3.

Aliquoting is unnecessary for -20°C storage

***** 20ul sizes contain 0.1% BSA**

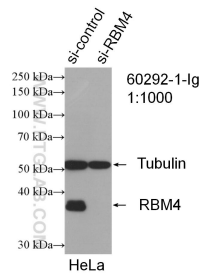
For technical support and original validation data for this product please contact:

T: 1 (888) 4PTGLAB (1-888-478-4522) (toll free in USA), or 1(312) 455-8498 (outside USA)

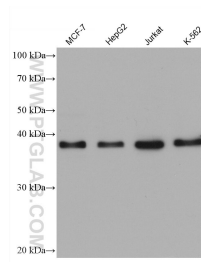
E: proteintech@ptglab.com
W: ptglab.com

This product is exclusively available under Proteintech Group brand and is not available to purchase from any other manufacturer.

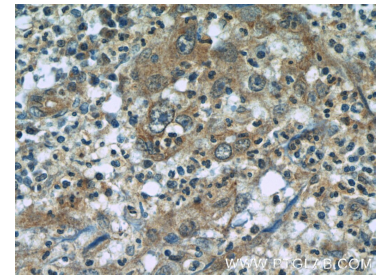
Selected Validation Data



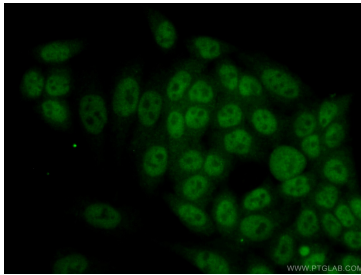
WB result of RBM4 antibody (60292-1-Ig; 1:1000; incubated at room temperature for 1.5 hours) with sh-Control and sh-RBM4 transfected HeLa cells.



Various lysates were subjected to SDS PAGE followed by western blot with 60292-1-Ig (RBM4 antibody) at dilution of 1:20000 incubated at room temperature for 1.5 hours.



Immunohistochemical analysis of paraffin-embedded human cervical cancer tissue slide using 60292-1-Ig (RBM4 Antibody) at dilution of 1:50 (under 40x lens).



Immunofluorescent analysis of (10% Formaldehyde) fixed HeLa cells using 60292-1-Ig (RBM4 antibody) at dilution of 1:100 and Alexa Fluor 488-conjugated AffiniPure Goat Anti-Mouse IgG(H+L).