

For Research Use Only

CYP2D6 Monoclonal antibody

Catalog Number: 60297-1-Ig



Basic Information

Catalog Number: 60297-1-Ig	GenBank Accession Number: BC075023	Purification Method: Protein A purification
Size: 150ul , Concentration: 2500 µg/ml by Nanodrop and 1847 µg/ml by Bradford method using BSA as the standard;	GeneID (NCBI): 1565	CloneNo.: 8B11D12
Source: Mouse	Full Name: cytochrome P450, family 2, subfamily D, polypeptide 6	Recommended Dilutions: WB 1:500-1:2000 IHC 1:50-1:500
Isotype: IgG2b	Calculated MW: 497 aa, 56 kDa	
Immunogen Catalog Number: AG12605	Observed MW: 56 kDa	

Applications

Tested Applications: IHC, WB, ELISA	Positive Controls: WB : HepG2 cells, fetal human brain tissue
Species Specificity: human	IHC : human liver cancer tissue,

Note-IHC: suggested antigen retrieval with TE buffer pH 9.0; (*) Alternatively, antigen retrieval may be performed with citrate buffer pH 6.0

Background Information

CYP2D6(Cytochrome P450 2D6) is also named as CYP2DL1 and belongs to the cytochrome P450 family. It is a monooxygenase that involved in the metabolism of drugs such as antiarrhythmics, adrenoceptor antagonists, and tricyclic antidepressants. CYP2D6 is responsible for the metabolism of many drugs and environmental chemicals that it oxidizes. It has 2 isoforms produced by alternative splicing with the molecular weight of 56 kDa and 50 kDa.

Storage

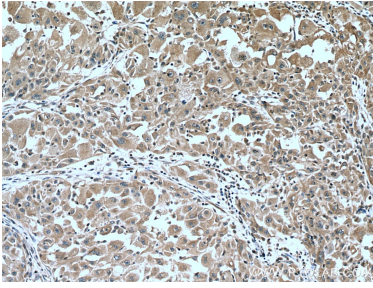
Storage:
Store at -20°C. Stable for one year after shipment.
Storage Buffer:
PBS with 0.02% sodium azide and 50% glycerol pH 7.3.
Aliquoting is unnecessary for -20°C storage

*** 20ul sizes contain 0.1% BSA

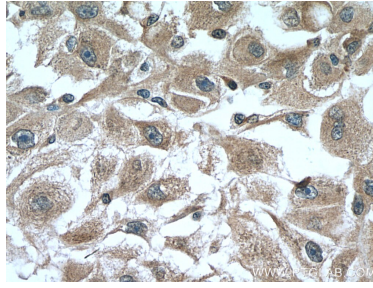
For technical support and original validation data for this product please contact:
T: 1 (888) 4PTGLAB (1-888-478-4522) (toll free in USA), or 1(312) 455-8498 (outside USA)
E: proteintech@ptglab.com
W: ptglab.com

This product is exclusively available under Proteintech Group brand and is not available to purchase from any other manufacturer.

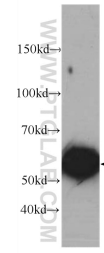
Selected Validation Data



Immunohistochemical analysis of paraffin-embedded human liver cancer tissue slide using 60297-1-Ig (CYP2D6 antibody) at dilution of 1:200 (under 10x lens). Heat mediated antigen retrieval with Tris-EDTA buffer (pH 9.0).



Immunohistochemical analysis of paraffin-embedded human liver cancer tissue slide using 60297-1-Ig (CYP2D6 antibody) at dilution of 1:200 (under 40x lens). Heat mediated antigen retrieval with Tris-EDTA buffer (pH 9.0).



HepG2 cells were subjected to SDS PAGE followed by western blot with 60297-1-Ig (CYP2D6 Antibody) at dilution of 1:1000 incubated at room temperature for 1.5 hours.