

For Research Use Only

# CREST Monoclonal antibody

Catalog Number: 60314-1-Ig



## Basic Information

<b>Catalog Number:</b> 60314-1-Ig	<b>GenBank Accession Number:</b> BC034494	<b>Purification Method:</b> Protein G purification
<b>Size:</b> 150ul , Concentration: 1500 µg/ml by Nanodrop and 1000 µg/ml by Bradford method using BSA as the standard;	<b>GeneID (NCBI):</b> 26039	<b>CloneNo.:</b> 3D5D10
<b>Source:</b> Mouse	<b>Full Name:</b> synovial sarcoma translocation gene on chromosome 18-like 1	
<b>Isotype:</b> IgG1	<b>Calculated MW:</b> 396 aa, 43 kDa	
<b>Immunogen Catalog Number:</b> AG3119	<b>Observed MW:</b> 50 kDa	

## Applications

**Tested Applications:**  
WB,ELISA

**Species Specificity:**  
human, rat, mouse

## Background Information

SS18-like 1(SS18L1) is a transcriptional activator that is required for calcium-dependent dendritic growth and branching in cortical neurons. It's also a nuclear protein interacts with CREB-binding protein and expressed in the developing brain. It helps regulate neuronal morphogenesis in calcium-dependent manner. The N-terminal domain of SS18L1 is required for suppressing transactivation in the basal state, while the C-terminal domain is required for calcium-induced transactivation. It's part of the CREST-BRG1 complex, a multiprotein complex that regulates promoter activation by orchestrating a calcium-dependent release of a repressor complex and a recruitment of an activator complex. This complex also binds to the NR2B promoter, and activity-dependent induction of NR2B expression involves a release of HDAC1 and recruitment of CREBBP. The calculated molecular weight of CREST is about 43 kDa, but the modified of CREST protein is 55 kDa (PMID: 25888396).

## Storage

**Storage:**  
Store at -20°C. Stable for one year after shipment.

**Storage Buffer:**  
PBS with 0.02% sodium azide and 50% glycerol pH 7.3.

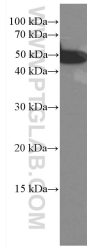
Aliquoting is unnecessary for -20°C storage

\*\*\* 20ul sizes contain 0.1% BSA

For technical support and original validation data for this product please contact:  
T: 1 (888) 4PTGLAB (1-888-478-4522) (toll free in USA), or 1(312) 455-8498 (outside USA) E: proteintech@ptglab.com W: ptglab.com

This product is exclusively available under Proteintech Group brand and is not available to purchase from any other manufacturer.

## Selected Validation Data



NIH/3T3 cells were subjected to SDS PAGE followed by western blot with 60314-1-Ig (CREST antibody) at dilution of 1:3000 incubated at room temperature for 1.5 hours.