

For Research Use Only

# GOT1 Monoclonal antibody

Catalog Number: 60317-1-Ig **2 Publications**



## Basic Information

<b>Catalog Number:</b> 60317-1-Ig	<b>GenBank Accession Number:</b> BC000498	<b>Purification Method:</b> Protein G purification
<b>Size:</b> 150ul, Concentration: 1100 µg/ml by Nanodrop and 500 µg/ml by Bradford method using BSA as the standard;	<b>GeneID (NCBI):</b> 2805	<b>CloneNo.:</b> 5A12E10
<b>Source:</b> Mouse	<b>Full Name:</b> glutamic-oxaloacetic transaminase 1, soluble (aspartate aminotransferase 1)	<b>Recommended Dilutions:</b> WB 1:2000-1:10000 IHC 1:20-1:200 IF 1:200-1:800
<b>Isotype:</b> IgG1	<b>Calculated MW:</b> 46 kDa	
<b>Immunogen Catalog Number:</b> AG7012	<b>Observed MW:</b> 40-46 kDa	

## Applications

**Tested Applications:**  
FC, IF, IHC, WB, ELISA

**Cited Applications:**  
IF, IP, WB

**Species Specificity:**  
human, mouse, rat, chicken

**Cited Species:**  
human

**Note-IHC: suggested antigen retrieval with TE buffer pH 9.0; (\*) Alternatively, antigen retrieval may be performed with citrate buffer pH 6.0**

**Positive Controls:**

**WB:** LNCaP cells, rat brain tissue, rat heart tissue, mouse brain tissue, K-562 cells, chicken brain, chicken heart

**IHC:** human liver cancer tissue,

**IF:** HepG2 cells,

## Background Information

Glutamate oxaloacetate transaminase 1 (GOT1) catalyzes the reversible reaction of L-aspartate and alpha-ketoglutarate into oxaloacetate and L-glutamate and plays a key role in carbon and nitrogen metabolism. GOT1 can potentially control the intracellular levels of reactive oxygen species (ROS) through NADPH synthesis and enhances tumor growth. GOT1 expression correlates with the growth of several tumors.

## Notable Publications

Author	Pubmed ID	Journal	Application
Wenzhu Li	28544376	J Cell Mol Med	WB
Chuanzhen Yang	37291265	Nat Cell Biol	WB,IF,IP

## Storage

**Storage:**

Store at -20°C. Stable for one year after shipment.

**Storage Buffer:**

PBS with 0.02% sodium azide and 50% glycerol pH 7.3.

Aliquoting is unnecessary for -20°C storage

\*\*\* 20ul sizes contain 0.1% BSA

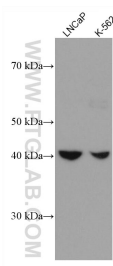
For technical support and original validation data for this product please contact:

T: 1 (888) 4PTGLAB (1-888-478-4522) (toll free in USA), or 1(312) 455-8498 (outside USA)

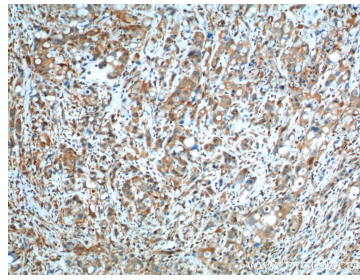
E: proteintech@ptglab.com  
W: ptglab.com

This product is exclusively available under Proteintech Group brand and is not available to purchase from any other manufacturer.

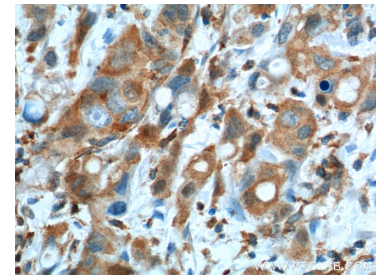
## Selected Validation Data



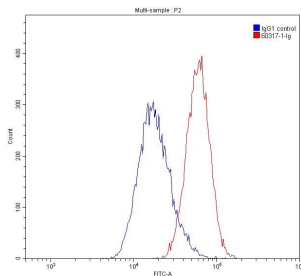
Various lysates were subjected to SDS PAGE followed by western blot with 60317-1-Ig (GOT1 antibody) at dilution of 1:5000 incubated at room temperature for 1.5 hours.



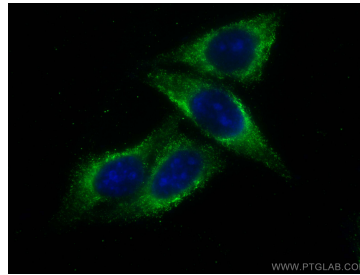
Immunohistochemical analysis of paraffin-embedded human liver cancer tissue slide using 60317-1-Ig (GOT1 Antibody) at dilution of 1:200 (under 10x lens). Heat mediated antigen retrieval with Tris-EDTA buffer (pH 9.0).



Immunohistochemical analysis of paraffin-embedded human liver cancer tissue slide using 60317-1-Ig (GOT1 Antibody) at dilution of 1:200 (under 40x lens). Heat mediated antigen retrieval with Tris-EDTA buffer (pH 9.0).



1X10<sup>6</sup> HepG2 cells were stained with 0.20ug GOT1 antibody (60317-1-Ig, red) and control antibody (blue). Fixed with 90% MeOH.



Immunofluorescent analysis of (-20°C Ethanol) fixed HepG2 cells using GOT1 antibody (60317-1-Ig, Clone: 5A12E10) at dilution of 1:400 and Coralite® 488-Conjugated AffiniPure Goat Anti-Mouse IgG(H+L).