

For Research Use Only

# IL-1F10 Monoclonal antibody

Catalog Number: 60319-1-Ig



## Basic Information

Catalog Number:

60319-1-Ig

GenBank Accession Number:

BC103966

Purification Method:

Protein G purification

Size:

150ul , Concentration: 4900 ug/ml by Nanodrop and 2000 ug/ml by Bradford method using BSA as the standard;

GeneID (NCBI):

84639

CloneNo.:

5B2F5

Source:

Mouse

UNIPROT ID:

Q8WWZ1

Recommended Dilutions:

WB: 1:500-1:2000

Isotype:

IgG1

Full Name:

interleukin 1 family, member 10 (theta)

FC (Intra): 0.40 ug per 10<sup>6</sup> cells in a 100 µl suspension

Immunogen Catalog Number:

AG17250

Calculated MW:

152 aa, 17 kDa

## Applications

Tested Applications:

WB, FC (Intra), ELISA

Positive Controls:

WB : Recombinant protein,

Species Specificity:

human

FC (Intra) : U-937 cells,

## Background Information

IL1F10 is a member of the interleukin 1 cytokine family. This cytokine is thought to participate in a network of interleukin 1 family members to regulate adapted and innate immune responses.

## Storage

Storage:

Store at -20°C. Stable for one year after shipment.

Storage Buffer:

PBS with 0.02% sodium azide and 50% glycerol, pH7.3

Aliquoting is unnecessary for -20°C storage

\*\*\* 20ul sizes contain 0.1% BSA

For technical support and original validation data for this product please contact:

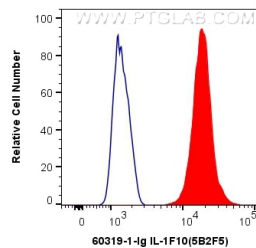
T: 1 (888) 4PTGLAB (1-888-478-4522) (toll free in USA), or 1(312) 455-8498 (outside USA)

E: [proteintech@ptglab.com](mailto:proteintech@ptglab.com)

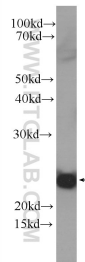
W: [ptglab.com](http://ptglab.com)

This product is exclusively available under Proteintech Group brand and is not available to purchase from any other manufacturer.

## Selected Validation Data



1X10<sup>6</sup> U-937 cells were intracellularly stained with 0.4 ug Anti-Human IL-1F10 (60319-1-Ig, Clone:5B2F5) and CoraLite®488-Conjugated AffiniPure Goat Anti-Mouse IgG(H+L) at dilution 1:1000 (red), or 0.4 ug Control Antibody. Cells were fixed with 4% PFA and permeabilized with Flow Cytometry Perm Buffer (PF00011-C).



Recombinant protein were subjected to SDS PAGE followed by western blot with 60319-1-Ig (IL1F10 Antibody) at dilution of 1:1000 incubated at room temperature for 1.5 hours.