

CD39/ENTPD1 Monoclonal antibody

Catalog Number: 60323-1-Ig

Basic Information

Catalog Number: 60323-1-Ig	GenBank Accession Number: BC047664	Purification Method: Protein A purification
Size: 150ul, Concentration: 1300 µg/ml by 953 Nanodrop and 1000 µg/ml by Bradford method using BSA as the standard;	GeneID (NCBI): 953	CloneNo.: 2D2H6
Source: Mouse	UNIPROT ID: P49961	Recommended Dilutions: IHC 1:50-1:500 IF 1:20-1:200
Isotype: IgG2a	Full Name: ectonucleoside triphosphate diphosphohydrolase 1	
Immunogen Catalog Number: AG6165	Calculated MW: 58 kDa	
	Observed MW: 54 kDa	

Applications

Tested Applications: IF, FC, IHC, ELISA	Positive Controls:
Species Specificity: human	IHC : human placenta tissue, IF : HeLa cells,
Note-IHC: suggested antigen retrieval with TE buffer pH 9.0; (*) Alternatively, antigen retrieval may be performed with citrate buffer pH 6.0	

Background Information

ENTPD1(Ectonucleoside triphosphate diphosphohydrolase 1) is also named CD39, NTPDase 1, and Ecto-ATPDase 1 and belongs to the GDA1/CD39 NTPase family. In the nervous system, it can hydrolyze ATP and other nucleotides to regulate purinergic neurotransmission. It is a noncovalent tetrameric protein and detergent inhibition of enzymatic activity is caused by dissociation of ectoapyrase tetramers into monomers(PMID: 9733785). And it is a 70- to 100-kDa protein that is heavily N-glycosylated(PMID:7930580). This protein has 6 glycosylation sites and 3 isoforms(58 kDa, 59 kDa, and 34 kDa) produced by alternative splicing. The soluble isoform of CD39(38-478 amino acid) is located in the extracellular part and 60323-1-Ig can recognize the soluble form of CD39 (38-478aa) molecule.

Storage

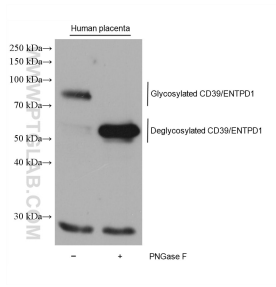
Storage:
Store at -20°C. Stable for one year after shipment.
Storage Buffer:
PBS with 0.02% sodium azide and 50% glycerol pH 7.3.
Aliquoting is unnecessary for -20°C storage

*** 20ul sizes contain 0.1% BSA

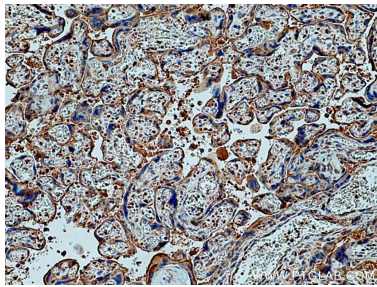
For technical support and original validation data for this product please contact:
 T: 1 (888) 4PTGLAB (1-888-478-4522) (toll free in USA), or 1(312) 455-8498 (outside USA)
 E: proteintech@ptglab.com
 W: ptglab.com

This product is exclusively available under Proteintech Group brand and is not available to purchase from any other manufacturer.

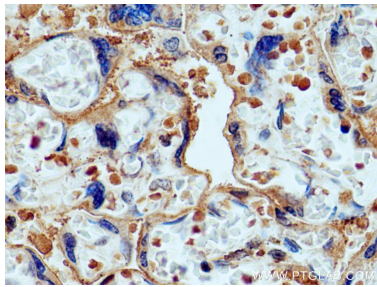
Selected Validation Data



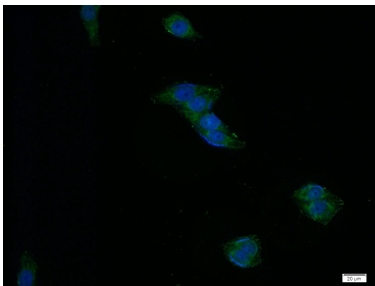
Various lysates were subjected to SDS PAGE followed by western blot with 60323-1-Ig (CD39/ENTPD1 antibody) at dilution of 1:10000 incubated at room temperature for 1.5 hours.



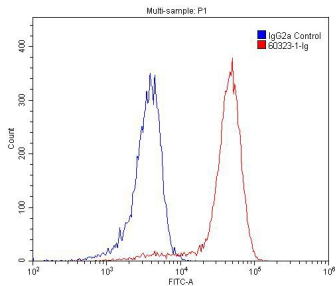
Immunohistochemical analysis of paraffin-embedded human placenta tissue slide using 60323-1-Ig (CD39/ENTPD1 antibody) at dilution of 1:100 (under 10x lens). Heat mediated antigen retrieval with Tris-EDTA buffer (pH 9.0).



Immunohistochemical analysis of paraffin-embedded human placenta tissue slide using 60323-1-Ig (CD39/ENTPD1 antibody) at dilution of 1:100 (under 40x lens). Heat mediated antigen retrieval with Tris-EDTA buffer (pH 9.0).



Immunofluorescent analysis of HeLa cells using 60323-1-Ig (ENTPD1 antibody) at dilution of 1:50 and Alexa Fluor 488-conjugated AffiniPure Goat Anti-Mouse IgG (H+L).



1X10⁶ Jurkat cells were stained with 0.2ug ENTPD1 antibody (60323-1-Ig, red) and control antibody (blue). Fixed with 4% PFA blocked with 3% BSA (30 min). Alexa Fluor 488-conjugated AffiniPure Goat Anti-Mouse IgG(H+L) with dilution 1:1500.