

For Research Use Only

# FGFR1 Monoclonal antibody

Catalog Number: 60325-1-Ig **26 Publications**



## Basic Information

<b>Catalog Number:</b> 60325-1-Ig	<b>GenBank Accession Number:</b> BC018128	<b>Purification Method:</b> Protein A purification
<b>Size:</b> 150ul , Concentration: 1000 µg/ml by Nanodrop;	<b>GeneID (NCBI):</b> 2260	<b>CloneNo.:</b> 10F12E7
<b>Source:</b> Mouse	<b>Full Name:</b> fibroblast growth factor receptor 1	<b>Recommended Dilutions:</b> WB 1:1000-1:3000 IHC 1:50-1:500
<b>Isotype:</b> IgG2c	<b>Calculated MW:</b> 820 aa, 91 kDa	
<b>Immunogen Catalog Number:</b> AG3646	<b>Observed MW:</b> 91 kDa	

## Applications

**Tested Applications:**  
FC, IHC, WB, ELISA

**Cited Applications:**  
IF, IHC, WB

**Species Specificity:**  
human

**Cited Species:**  
human

**Positive Controls:**

**WB :** MCF-7 cells, HT-1080 cells, HUVEC cells, U2OS cells, Y79 cells, K-562 cells

**IHC :** human breast cancer tissue,

**Note-IHC: suggested antigen retrieval with TE buffer pH 9.0; (\*) Alternatively, antigen retrieval may be performed with citrate buffer pH 6.0**

## Background Information

Fibroblast growth factor receptor 1 (FGFR1) is a tyrosine-protein kinase that acts as a cell-surface receptor for fibroblast growth factors. FGFR1 has been implicated in diverse biological processes including embryonic development, cell proliferation, differentiation, migration, and tumorigenesis. Mutations in the FGFR1 gene have been associated with Pfeiffer syndrome, Jackson-Weiss syndrome, Antley-Bixler syndrome, osteoglyphonic dysplasia, squamous cell lung cancer, and autosomal dominant Kallmann syndrome. Alternatively spliced variants that encode different protein isoforms have been described.

## Notable Publications

Author	Pubmed ID	Journal	Application
Lili Yang	28928430	Sci Rep	WB,IHC
Libo Hou	28889064	Mol Immunol	WB
T Wang	26535691	Genet Mol Res	WB

## Storage

**Storage:**

Store at -20°C. Stable for one year after shipment.

**Storage Buffer:**

PBS with 0.02% sodium azide and 50% glycerol pH 7.3.

Aliquoting is unnecessary for -20°C storage

\*\*\* 20ul sizes contain 0.1% BSA

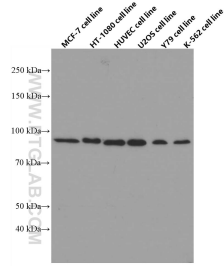
For technical support and original validation data for this product please contact:

T: 1 (888) 4PTGLAB (1-888-478-4522) (toll free in USA), or 1(312) 455-8498 (outside USA)

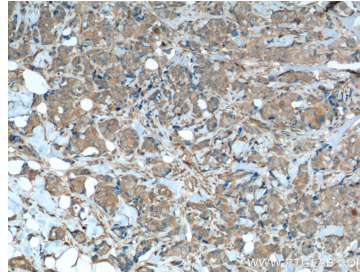
E: proteintech@ptglab.com  
W: ptglab.com

This product is exclusively available under Proteintech Group brand and is not available to purchase from any other manufacturer.

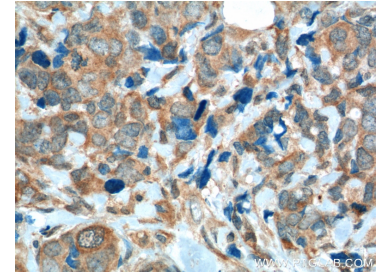
## Selected Validation Data



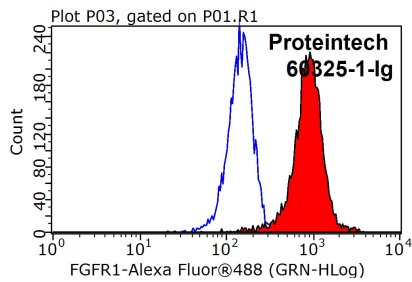
MCF-7, HT-1080, HUVEC, U2OS, Y79, and K-562 cells were subjected to SDS PAGE followed by western blot with 60325-1-Ig (FGFR1 antibody) at dilution of 1:3000 incubated at room temperature for 1.5 hours.



Immunohistochemical analysis of paraffin-embedded human breast cancer tissue slide using 60325-1-Ig (FGFR1 Antibody) at dilution of 1:200 (under 10x lens). Heat mediated antigen retrieval with Tris-EDTA buffer (pH 9.0).



Immunohistochemical analysis of paraffin-embedded human breast cancer tissue slide using 60325-1-Ig (FGFR1 Antibody) at dilution of 1:200 (under 40x lens). Heat mediated antigen retrieval with Tris-EDTA buffer (pH 9.0).



1X10<sup>6</sup> K-562 cells were stained with 0.2ug FGFR1 antibody (60325-1-Ig, red) and control antibody (blue). Fixed with 90% MeOH blocked with 3% BSA (30 min). Alexa Fluor 488-conjugated AffiniPure Goat Anti-Mouse IgG(H+L) with dilution 1:1000.