

For Research Use Only

MAD2L1 Monoclonal antibody

Catalog Number: 66014-1-Ig

Featured Product

1 Publications



Basic Information

Catalog Number:

66014-1-Ig

Size:

150ul, Concentration: 1073 ug/ml by Bradford method using BSA as the standard;

Source:

Mouse

Isotype:

IgG2b

Immunogen Catalog Number:

AG17512

GenBank Accession Number:

BC000356

GeneID (NCBI):

4085

UNIPROT ID:

Q13257

Full Name:

MAD2 mitotic arrest deficient-like 1 (yeast)

Calculated MW:

24 kDa

Observed MW:

24 kDa

Purification Method:

Protein A purification

CloneNo.:

2F5F12

Recommended Dilutions:

WB 1:1000-1:6000

IHC 1:20-1:200

Applications

Tested Applications:

WB, IHC, ELISA

Cited Applications:

WB

Species Specificity:

human

Cited Species:

human

Note-IHC: suggested antigen retrieval with TE buffer pH 9.0; (*) Alternatively, antigen retrieval may be performed with citrate buffer pH 6.0

Positive Controls:

WB : HEK-293 cells, HEK-293

IHC : human testis tissue,

Background Information

MAD2 mitotic arrest deficient-like 1 (yeast) (MAD2L1, synonyms: MAD2, HSMAD2) is a component of the mitotic spindle assembly checkpoint that prevents the onset of anaphase until all chromosomes are properly aligned at the metaphase plate. MAD2L1 is localized to human chromosome band 5q23.3 by in situ hybridization.

Notable Publications

Author	Pubmed ID	Journal	Application
Yanhong Tu	38151757	FEBS Open Bio	WB

Storage

Storage:

Store at -20°C. Stable for one year after shipment.

Storage Buffer:

PBS with 0.02% sodium azide and 50% glycerol pH 7.3.

Aliquoting is unnecessary for -20°C storage

*** 20ul sizes contain 0.1% BSA

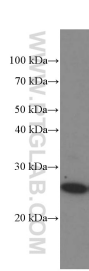
For technical support and original validation data for this product please contact:

T: 1 (888) 4PTGLAB (1-888-478-4522) (toll free in USA), or 1(312) 455-8498 (outside USA)

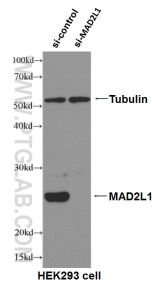
E: proteintech@ptglab.com
W: ptglab.com

This product is exclusively available under Proteintech Group brand and is not available to purchase from any other manufacturer.

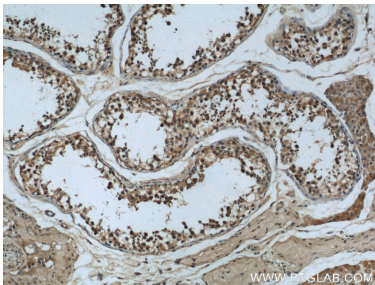
Selected Validation Data



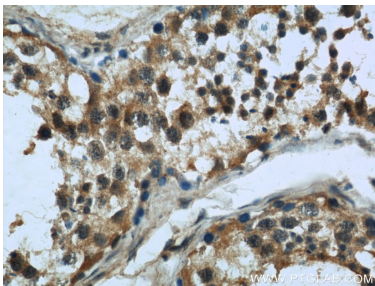
HEK-293 cells were subjected to SDS PAGE followed by western blot with 66014-1-Ig (MAD2L1 Antibody) at dilution of 1:3000 incubated at room temperature for 1.5 hours.



WB result of MAD2L1 antibody (66014-1-Ig, 1:2000) with si-control and si-MAD2L1 transfected HEK293 cells.



Immunohistochemical analysis of paraffin-embedded human testis slide using 66014-1-Ig (MAD2L1 Antibody) at dilution of 1:50.



Immunohistochemical analysis of paraffin-embedded human testis slide using 66014-1-Ig (MAD2L1 Antibody) at dilution of 1:50.