

For Research Use Only

TTF1 Monoclonal antibody

Catalog Number: 66034-1-Ig **3 Publications**



Basic Information

Catalog Number: 66034-1-Ig	GenBank Accession Number: NM_003317	Purification Method: Protein A purification
Size: 150ul , Concentration: 1000 µg/ml by Bradford method using BSA as the standard;	GeneID (NCBI): 7080	CloneNo.: 2C8F3
Source: Mouse	Full Name: NK2 homeobox 1	Recommended Dilutions: WB 1:1000-1:8000 IHC 1:50-1:500 IF 1:200-1:800
Isotype: IgG3	Calculated MW: 42 kDa	
	Observed MW: 41 kDa	

Applications

Tested Applications: IF, IHC, WB, ELISA	Positive Controls: WB : HepG2 cells, IHC : human thyroid cancer tissue, human lung cancer tissue IF : human lung cancer tissue,
Cited Applications: IHC, WB	
Species Specificity: human, pig	
Cited Species: human	
Note-IHC: suggested antigen retrieval with TE buffer pH 9.0; (*) Alternatively, antigen retrieval may be performed with citrate buffer pH 6.0	

Background Information

Homeobox protein Nkx-2.1 (NKX2-1), also named Thyroid nuclear factor 1, Thyroid transcription factor 1 (TTF1). It is a transcription factor that binds and activates the promoter of thyroid specific genes such as thyroglobulin, thyroperoxidase, and thyrotropin receptor. Crucial in the maintenance of the thyroid differentiation phenotype. May play a role in lung development and surfactant homeostasis. Defects in NKX2-1 are the cause of benign hereditary chorea (BHC), choreoathetosis, hypothyroidism, and neonatal respiratory distress (CHNRD).

Notable Publications

Author	Pubmed ID	Journal	Application
Kun Wang	35415320	ACS Omega	WB
Merve Özel	33689126	Cell Biochem Biophys	WB
Weizhu Zhao	37225691	Nat Commun	IHC

Storage

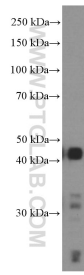
Storage:
Store at -20°C. Stable for one year after shipment.
Storage Buffer:
PBS with 0.02% sodium azide and 50% glycerol pH 7.3.
Aliquoting is unnecessary for -20°C storage

*** 20ul sizes contain 0.1% BSA

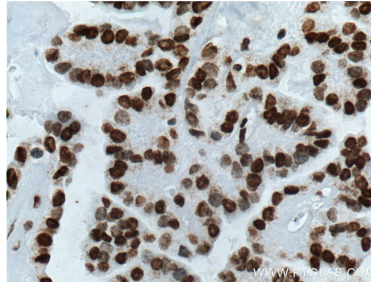
For technical support and original validation data for this product please contact:
T: 1 (888) 4PTGLAB (1-888-478-4522) (toll free in USA), or 1(312) 455-8498 (outside USA)
E: proteintech@ptglab.com
W: ptglab.com

This product is exclusively available under Proteintech Group brand and is not available to purchase from any other manufacturer.

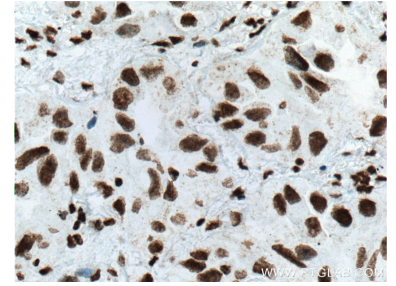
Selected Validation Data



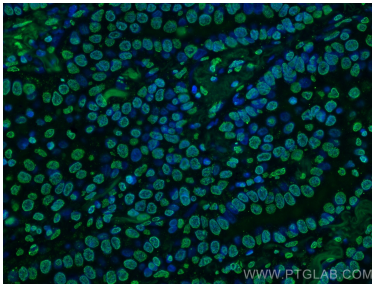
HepG2 cells were subjected to SDS PAGE followed by western blot with 66034-1-Ig (TTF1 antibody at dilution of 1:4000 incubated at room temperature for 1.5 hours.



Immunohistochemical analysis of paraffin-embedded human thyroid cancer tissue slide using 66034-1-Ig (TTF1 antibody at dilution of 1:800 (under 40x lens). Heat mediated antigen retrieval with Tris-EDTA buffer (pH 9.0).



Immunohistochemical analysis of paraffin-embedded human lung cancer tissue slide using 66034-1-Ig (TTF1 antibody at dilution of 1:800 (under 40x lens). Heat mediated antigen retrieval with Tris-EDTA buffer (pH 9.0).



Immunofluorescent analysis of (4% PFA) fixed human lung cancer tissue using TTF1 antibody (66034-1-Ig, Clone: 2C8F3) at dilution of 1:400 and CoraLite®488-Conjugated AffiniPure Goat Anti-Mouse IgG(H+L).