

# FKBP52 Monoclonal antibody

Catalog Number: 66040-1-Ig

## Basic Information

<b>Catalog Number:</b> 66040-1-Ig	<b>GenBank Accession Number:</b> BC007924	<b>Purification Method:</b> Protein G purification
<b>Size:</b> 150ul , Concentration: 433 µg/ml by Bradford method using BSA as the standard;	<b>GeneID (NCBI):</b> 2288	<b>CloneNo.:</b> 3F5F9
<b>Source:</b> Mouse	<b>UNIPROT ID:</b> Q02790	<b>Recommended Dilutions:</b> WB 1:500-1:1000 IHC 1:20-1:200 IF/ICC 1:10-1:100
<b>Isotype:</b> IgG1	<b>Full Name:</b> FK506 binding protein 4, 59kDa	
<b>Immunogen Catalog Number:</b> AG18704	<b>Calculated MW:</b> 52 kDa	
	<b>Observed MW:</b> 52 kDa	

## Applications

<b>Tested Applications:</b> WB, IF, IHC, ELISA	<b>Positive Controls:</b>
<b>Species Specificity:</b> human	<b>WB :</b> HeLa cells, Jurkat cells, MCF-7 cells, K-562 cells
<b>Note-IHC: suggested antigen retrieval with TE buffer pH 9.0; (*) Alternatively, antigen retrieval may be performed with citrate buffer pH 6.0</b>	<b>IHC :</b> human cervical cancer tissue, human colon cancer tissue
	<b>IF/ICC :</b> HeLa cells,

## Background Information

FKBP52 (FK506 binding protein 4) is a member of the immunophilin protein family that comprises intracellular protein effectors of immunosuppressive drugs, and it is known as a steroid receptor-associated protein. As a novel regulator of microtubule dynamics, FKBP52 is associated with the motor protein dynein and with the cytoskeleton during mitosis. FKBP52 is highly expressed in CNS regions susceptible to Alzheimer's, and plays a role in modulating toxicity of Abeta peptides. The protein can associate with the Tau function, and may help to decipher and modulate the events involved in Tau-induced neurodegeneration. In addition, FKBP52 is likely to play a role in growth and development of the male genitalia.

## Storage

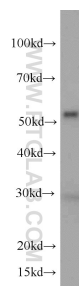
**Storage:**  
Store at -20°C. Stable for one year after shipment.  
**Storage Buffer:**  
PBS with 0.02% sodium azide and 50% glycerol pH 7.3.  
**Aliquoting is unnecessary for -20°C storage**

\*\*\* 20ul sizes contain 0.1% BSA

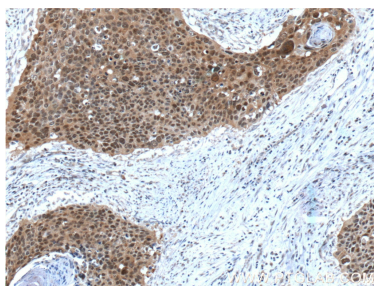
For technical support and original validation data for this product please contact:  
T: 1 (888) 4PTGLAB (1-888-478-4522) (toll free in USA), or 1(312) 455-8498 (outside USA)  
E: [proteintech@ptglab.com](mailto:proteintech@ptglab.com)  
W: [ptglab.com](http://ptglab.com)

This product is exclusively available under Proteintech Group brand and is not available to purchase from any other manufacturer.

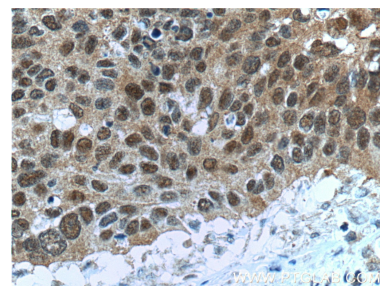
## Selected Validation Data



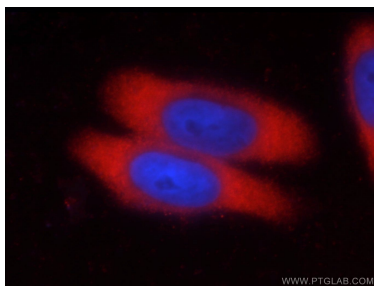
HeLa cells were subjected to SDS PAGE followed by western blot with 66040-1-Ig (FKBP52 antibody) at dilution of 1:500 incubated at room temperature for 1.5 hours.



Immunohistochemical analysis of paraffin-embedded human cervical cancer tissue slide using 66040-1-Ig (FKBP52 Antibody) at dilution of 1:200 (under 10x lens). Heat mediated antigen retrieved with Tris-EDTA buffer, pH9.0.



Immunohistochemical analysis of paraffin-embedded human cervical cancer tissue slide using 66040-1-Ig (FKBP52 Antibody) at dilution of 1:200 (under 40x lens). Heat mediated antigen retrieved with Tris-EDTA buffer, pH9.0.



Immunofluorescent analysis of HeLa cells using 66040-1-Ig (FKBP52 antibody) at dilution of 1:25 and Rhodamine-Goat anti-Mouse IgG.