

## IA-2/PTPRN Monoclonal antibody

Catalog Number: 66045-1-Ig

## Basic Information

<b>Catalog Number:</b> 66045-1-Ig	<b>GenBank Accession Number:</b> BC007713	<b>Purification Method:</b> Protein A purification
<b>Size:</b> 150ul , Concentration: 2500 µg/ml by Nanodrop and 1480 µg/ml by Bradford method using BSA as the standard;	<b>GeneID (NCBI):</b> 5798	<b>CloneNo.:</b> 1D3F5
<b>Source:</b> Mouse	<b>Full Name:</b> protein tyrosine phosphatase, receptor type, N	<b>Recommended Dilutions:</b> WB 1:500-1:1000 IHC 1:200-1:800 IF 1:10-1:100
<b>Isotype:</b> IgG3	<b>Calculated MW:</b> 105 kDa	
<b>Immunogen Catalog Number:</b> AG17909	<b>Observed MW:</b> 60-65 kDa, 106-115 kDa	

## Applications

<b>Tested Applications:</b> IF, IHC, WB, ELISA	<b>Positive Controls:</b>
<b>Species Specificity:</b> human	<b>WB :</b> Human brain, tissue
<b>Note-IHC:</b> suggested antigen retrieval with <b>TE buffer pH 9.0; (*) Alternatively, antigen retrieval may be performed with citrate buffer pH 6.0</b>	<b>IHC :</b> human pancreas cancer tissue, human brain tissue
	<b>IF :</b> HepG2 cells,

## Background Information

IA-2/PTPRN is a member of the protein tyrosine phosphatase (PTP) family, which contains a transmembrane region, an intracellular PTP-like domain and an extracellular N-terminus. Experiments found that IA-2/PTPRN localizes to secretory granules and is exclusively expressed in neuroendocrine cells (including pancreatic islets cell). IA-2/PTPRN was found to be a major autoantigen in insulin-dependent diabetes mellitus and the detection of autoantibodies against IA-2/PTPRN is commonly used as a diabetes diagnosis marker.

## Storage

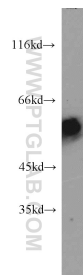
**Storage:**  
Store at -20°C. Stable for one year after shipment.  
**Storage Buffer:**  
PBS with 0.02% sodium azide and 50% glycerol pH 7.3.  
 Aliquoting is unnecessary for -20°C storage

\*\*\* 20ul sizes contain 0.1% BSA

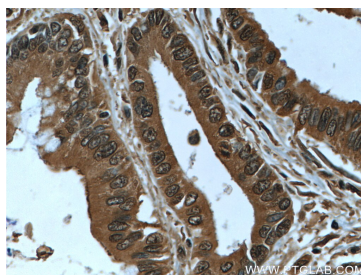
For technical support and original validation data for this product please contact:  
 T: 1 (888) 4PTGLAB (1-888-478-4522) (toll free in USA), or 1(312) 455-8498 (outside USA)  
 E: [proteintech@ptglab.com](mailto:proteintech@ptglab.com)  
 W: [ptglab.com](http://ptglab.com)

This product is exclusively available under Proteintech Group brand and is not available to purchase from any other manufacturer.

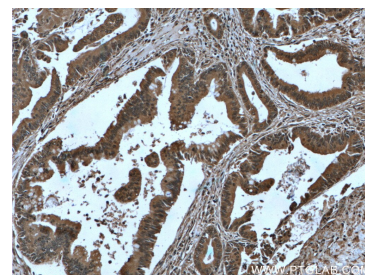
## Selected Validation Data



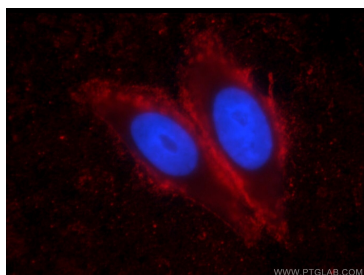
human brain tissue were subjected to SDS PAGE followed by western blot with 66045-1-Ig (IA-2/PTPRN antibody) at dilution of 1:500 incubated at room temperature for 1.5 hours.



Immunohistochemical analysis of paraffin-embedded human pancreas cancer tissue slide using 66045-1-Ig (IA-2/PTPRN antibody at dilution of 1:400 (under 40x lens). Heat mediated antigen retrieval with Tris-EDTA buffer (pH 9.0).



Immunohistochemical analysis of paraffin-embedded human pancreas cancer tissue slide using 66045-1-Ig (IA-2/PTPRN antibody at dilution of 1:400 (under 10x lens). Heat mediated antigen retrieval with Tris-EDTA buffer (pH 9.0).



Immunofluorescent analysis of HepG2 cells using 66045-1-Ig (IA-2/PTPRN antibody) at dilution of 1:25 and Rhodamine-Goat anti-Mouse IgG.