

For Research Use Only

# RAB27A Monoclonal antibody

Catalog Number: 66058-1-Ig

Featured Product

4 Publications



## Basic Information

### Catalog Number:

66058-1-Ig

### Size:

150ul, Concentration: 1600 ug/ml by Nanodrop and 1000 ug/ml by Bradford method using BSA as the standard;

### Source:

Mouse

### Isotype:

IgG1

### Immunogen Catalog Number:

AG12382

### GenBank Accession Number:

BC107680

### GeneID (NCBI):

5873

### UNIPROT ID:

P51159

### Full Name:

RAB27A, member RAS oncogene family

### Calculated MW:

221 aa, 25 kDa

### Observed MW:

27 kDa

### Purification Method:

Protein G purification

### CloneNo.:

1C4B8

### Recommended Dilutions:

WB: 1:5000-1:50000

IHC: 1:5000-1:20000

FC (Intra): 0.25 ug per 10<sup>6</sup> cells in a 100 µl suspension

## Applications

### Tested Applications:

WB, IHC, FC (Intra), ELISA

### Cited Applications:

WB, IF

### Species Specificity:

human, mouse

### Cited Species:

human, mouse

**Note-IHC: suggested antigen retrieval with TE buffer pH 9.0; (\*) Alternatively, antigen retrieval may be performed with citrate buffer pH 6.0**

### Positive Controls:

WB: HeLa cells, K562, K-562 cells, Jurkat cells, HEK-293 cells, HL-60 cells, HepG2 cells

IHC: human lymphoma tissue, human colon cancer tissue, human skeletal muscle tissue

FC (Intra): HeLa cells,

## Background Information

Rab27A is a member of a large family of Ras-related small GTPases. The protein is membrane-bound and may be involved in protein transport and small GTPase mediated signal transduction. Recent studies suggest that Rab27A is associated with melanosomes in pigmented cells and regulates melanosome transport via its interaction with actin-based cellular motors such as myosin Va and myosin VIIa. RAB27A is also required for regulated secretion in cytotoxic T lymphocytes. Rab27A is implicated in several diseases, including Griscelli syndrome, choroideremia, and the Hermansky-Pudlak syndrome mouse model, gunmetal.

## Notable Publications

Author	Pubmed ID	Journal	Application
Yuling Jing	41163081	Stem Cell Res Ther	WB
Xiaohui Zhang	40541182	Cell Metab	WB,IF
Ziming Chen	40419796	Nat Cell Biol	WB

## Storage

### Storage:

Store at -20°C. Stable for one year after shipment.

### Storage Buffer:

PBS with 0.02% sodium azide and 50% glycerol, pH7.3

Aliquoting is unnecessary for -20°C storage

\*\*\* 20ul sizes contain 0.1% BSA

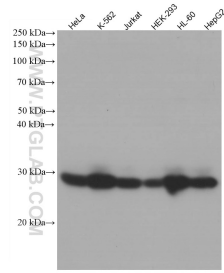
For technical support and original validation data for this product please contact:

T: 1 (888) 4PTGLAB (1-888-478-4522) (toll free in USA), or 1(312) 455-8498 (outside USA)

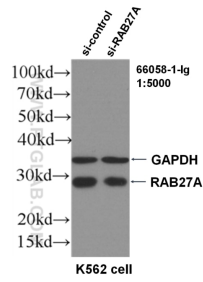
E: proteintech@ptglab.com  
W: ptglab.com

This product is exclusively available under Proteintech Group brand and is not available to purchase from any other manufacturer.

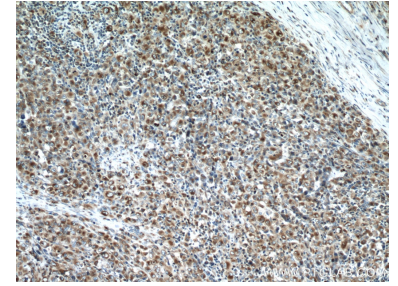
## Selected Validation Data



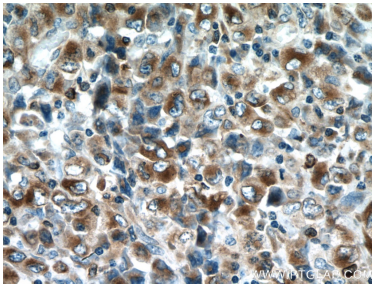
Various lysates were subjected to SDS PAGE followed by western blot with 66058-1-Ig (RAB27A antibody) at dilution of 1:20000 incubated at room temperature for 1.5 hours.



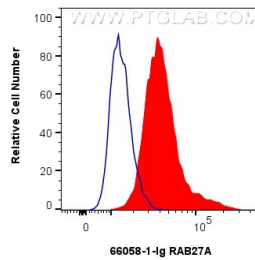
WB result of RAB27A antibody (66058-1-Ig, 1:5000) with si-Control and si-RAB27A transfected K562 cells.



Immunohistochemical analysis of paraffin-embedded human lymphoma tissue slide using 66058-1-Ig (RAB27A antibody) at dilution of 1:10000 (under 10x lens. Heat mediated antigen retrieval with Tris-EDTA buffer (pH 9.0).



Immunohistochemical analysis of paraffin-embedded human lymphoma tissue slide using 66058-1-Ig (RAB27A antibody) at dilution of 1:10000 (under 40x lens. Heat mediated antigen retrieval with Tris-EDTA buffer (pH 9.0).



$1 \times 10^6$  HeLa cells were intracellularly stained with 0.25  $\mu$ g RAB27A Monoclonal antibody (66058-1-Ig, Clone:1C4B8) and CoraLite@488-Conjugated Goat Anti-Mouse IgG(H+L) (SA00013-1)(red), or 0.25  $\mu$ g Isotype Control (blue). Cells were fixed and permeabilized with Intracellular Flow Cytometry Fixation & Permeabilization Buffer Kit (PF00019).