

For Research Use Only

# SRP9 Monoclonal antibody

Catalog Number: 66068-1-Ig



## Basic Information

<b>Catalog Number:</b> 66068-1-Ig	<b>GenBank Accession Number:</b> BC015094	<b>Purification Method:</b> Protein A purification
<b>Size:</b> 150ul , Concentration: 1600 µg/ml by Nanodrop and 933 µg/ml by Bradford method using BSA as the standard;	<b>GeneID (NCBI):</b> 6726	<b>CloneNo.:</b> 1H7G10
<b>Source:</b> Mouse	<b>Full Name:</b> signal recognition particle 9kDa	<b>Recommended Dilutions:</b> WB 1:1000-1:4000
<b>Isotype:</b> IgG2a	<b>Calculated MW:</b> 10 kDa	
<b>Immunogen Catalog Number:</b> AG17153	<b>Observed MW:</b> 10 kDa	

## Applications

<b>Tested Applications:</b> WB, ELISA	<b>Positive Controls:</b> WB : HSC-T6 cells, HeLa cells, HEK-293 cells, ROS1728 cells, NIH/3T3 cells, 4T1 cells
<b>Species Specificity:</b> human, rat, mouse	

## Background Information

Signal recognition particle 9(SRP9) is component of the signal recognition particle (SRP), which is a ribonucleoprotein complex that mediates the targeting of proteins to the rough endoplasmic reticulum (ER). SRP9 form a heterodimer with SRP14, which involves in arrest of the elongation of the nascent chains during targeting to ensure efficient translocation of the preprotein.

## Storage

**Storage:**  
Store at -20°C. Stable for one year after shipment.  
**Storage Buffer:**  
PBS with 0.02% sodium azide and 50% glycerol pH 7.3.  
Aliquoting is unnecessary for -20°C storage

\*\*\* 20ul sizes contain 0.1% BSA

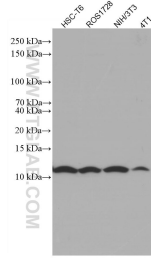
For technical support and original validation data for this product please contact:

T: 1 (888) 4PTGLAB (1-888-478-4522) (toll free in USA), or 1(312) 455-8498 (outside USA)

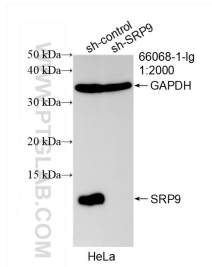
E: [proteintech@ptglab.com](mailto:proteintech@ptglab.com)  
W: [ptglab.com](http://ptglab.com)

This product is exclusively available under Proteintech Group brand and is not available to purchase from any other manufacturer.

## Selected Validation Data



Various lysates were subjected to SDS PAGE followed by western blot with 66068-1-Ig (SRP9 antibody) at dilution of 1:2000 incubated at room temperature for 1.5 hours.



WB result of SRP9 antibody (66068-1-Ig; 1:2000; incubated at room temperature for 1.5 hours) with sh-Control and sh-SRP9 transfected HeLa cells.