

For Research Use Only

Serum amyloid P component Monoclonal antibody

Catalog Number: 66084-1-Ig **1 Publications**



Basic Information

Catalog Number: 66084-1-Ig	GenBank Accession Number: BC007058	Purification Method: Protein A purification
Size: 150ul , Concentration: 800 ug/ml by Nanodrop and 420 ug/ml by Bradford method using BSA as the standard;	GeneID (NCBI): 325	CloneNo.: 1A1D10
Source: Mouse	UNIPROT ID: P02743	Recommended Dilutions: WB 1:500-1:2000 IHC 1:50-1:500 IF-P 1:200-1:800
Isotype: IgG2b	Full Name: amyloid P component, serum	
Immunogen Catalog Number: AG14957	Calculated MW: 223 aa, 25 kDa	
	Observed MW: 27 kDa	

Applications

Tested Applications: WB, IHC, IF-P, ELISA	Positive Controls: WB : human kidney tissue, human plasma IHC : human liver tissue, human kidney tissue IF-P : human liver cancer tissue, human liver tissue, mouse spleen tissue
Cited Applications: IHC	
Species Specificity: human, mouse	
Cited Species: human	
Note-IHC: suggested antigen retrieval with TE buffer pH 9.0; (*) Alternatively, antigen retrieval may be performed with citrate buffer pH 6.0	

Background Information

Serum amyloid P component (SAP), a member of pentraxin family, is a constitutive serum protein that is synthesized by hepatocytes. It is an acute phase protein, structurally related to C-reactive protein. SAP is a calcium-dependent ligand binding protein, which can interact with DNA and histones and may scavenge nuclear material released from damaged circulating cells.

Notable Publications

Author	Pubmed ID	Journal	Application
Weifeng Wang	33333044	Clin Chim Acta	IHC

Storage

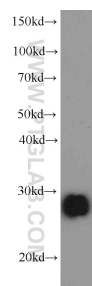
Storage:
Store at -20°C. Stable for one year after shipment.
Storage Buffer:
PBS with 0.02% sodium azide and 50% glycerol pH 7.3.
Aliquoting is unnecessary for -20°C storage

*** 20ul sizes contain 0.1% BSA

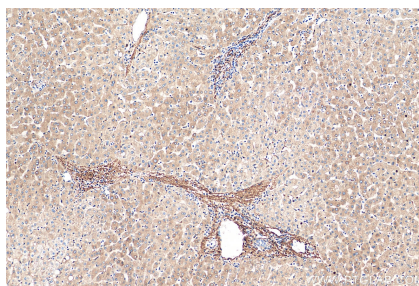
For technical support and original validation data for this product please contact:
T: 1 (888) 4PTGLAB (1-888-478-4522) (toll free in USA), or 1(312) 455-8498 (outside USA)
E: proteintech@ptglab.com
W: ptglab.com

This product is exclusively available under Proteintech Group brand and is not available to purchase from any other manufacturer.

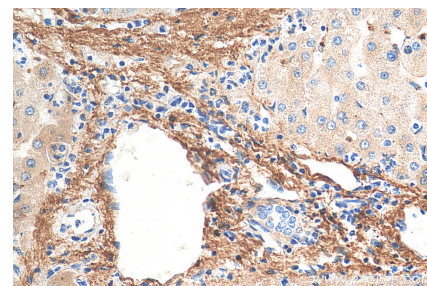
Selected Validation Data



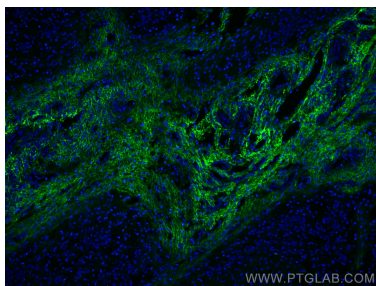
human kidney tissue were subjected to SDS PAGE followed by western blot with 66084-1-Ig (Serum amyloid P component antibody) at dilution of 1:1000 incubated at room temperature for 1.5 hours.



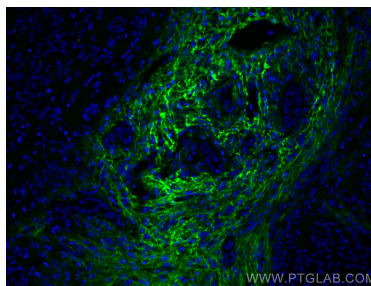
Immunohistochemical analysis of paraffin-embedded human liver tissue slide using 66084-1-Ig (Serum amyloid P component antibody) at dilution of 1:200 (under 10x lens). Heat mediated antigen retrieval with Tris-EDTA buffer (pH 9.0).



Immunohistochemical analysis of paraffin-embedded human liver tissue slide using 66084-1-Ig (Serum amyloid P component antibody) at dilution of 1:200 (under 40x lens). Heat mediated antigen retrieval with Tris-EDTA buffer (pH 9.0).



Immunofluorescent analysis of (4% PFA) fixed human liver cancer tissue using Serum amyloid P component antibody (66084-1-Ig, Clone: 1A1D10) at dilution of 1:400 and CoraLite® 488-Conjugated AffiniPure Goat Anti-Mouse IgG(H+L).



Immunofluorescent analysis of (4% PFA) fixed human liver cancer tissue using Serum amyloid P component antibody (66084-1-Ig, Clone: 1A1D10) at dilution of 1:400 and CoraLite® 488-Conjugated AffiniPure Goat Anti-Mouse IgG(H+L).