

For Research Use Only

NCALD Monoclonal antibody

Catalog Number: 66088-1-Ig



Basic Information

Catalog Number: 66088-1-Ig	GenBank Accession Number: BC036098	Purification Method: Protein A purification
Size: 150ul , Concentration: 1053 ug/ml by Bradford method using BSA as the standard;	GeneID (NCBI): 83988	CloneNo.: 6B4E10
Source: Mouse	UNIPROT ID: P61601	Recommended Dilutions: WB 1:500-1:3200 IHC 1:20-1:200 IF/ICC 1:50-1:500
Isotype: IgG2a	Full Name: neurocalcin delta	
Immunogen Catalog Number: AG18760	Calculated MW: 193 aa, 22 kDa	
	Observed MW: 22 kDa	

Applications

Tested Applications:
WB, IHC, IF/ICC, ELISA

Species Specificity:
human, mouse, pig, rat

Note-IHC: suggested antigen retrieval with TE buffer pH 9.0; (*) Alternatively, antigen retrieval may be performed with citrate buffer pH 6.0

Positive Controls:

WB : fetal human brain tissue, human brain tissue, pig cerebellum tissue, pig brain tissue, rat brain tissue, mouse brain tissue, rat cerebellum tissue, mouse cerebellum tissue

IHC : human cerebellum tissue, mouse cerebellum tissue, human testis tissue, mouse brain tissue

IF/ICC : HeLa cells,

Background Information

NCALD(Neurocalcin-delta) is a member of the EF-hand calcium-binding protein superfamily. It may be involved in the calcium-dependent regulation of rhodopsin phosphorylation. It is a high-affinity Ca^{2+} sensor (Kd of approx. 0.6 uM), which is most abundantly expressed in the Purkinje cells of the cerebellum (PMID:11964161). This antibody is specific to NCALD.

Storage

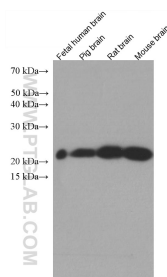
Storage:
Store at -20°C. Stable for one year after shipment.
Storage Buffer:
PBS with 0.02% sodium azide and 50% glycerol pH 7.3.
Aliquoting is unnecessary for -20°C storage

*** 20ul sizes contain 0.1% BSA

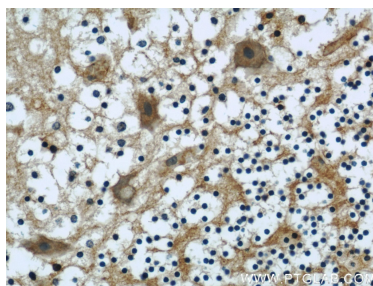
For technical support and original validation data for this product please contact:
T: 1 (888) 4PTGLAB (1-888-478-4522) (toll free in USA), or 1(312) 455-8498 (outside USA)
E: proteintech@ptglab.com
W: ptglab.com

This product is exclusively available under Proteintech Group brand and is not available to purchase from any other manufacturer.

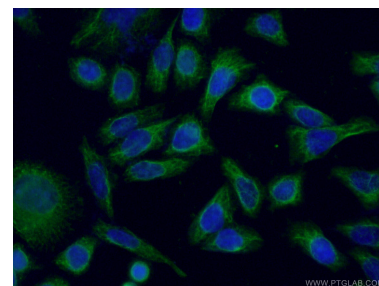
Selected Validation Data



Various lysates were subjected to SDS PAGE followed by western blot with 66088-1-Ig (NCALD antibody) at dilution of 1:1600 incubated at room temperature for 1.5 hours.



Immunohistochemical analysis of paraffin-embedded human cerebellum using 66088-1-Ig (NCALD antibody) at dilution of 1:50 (under 40x lens).



Immunofluorescent analysis of (-20°C Ethanol) fixed HeLa cells using 66088-1-Ig (NCALD antibody) at dilution of 1:50 and Alexa Fluor 488-Conjugated AffiniPure Goat Anti-Mouse IgG(H+L).