

For Research Use Only

Caspase 8/p43/p18 Monoclonal antibody



Catalog Number: 66093-1-Ig

Featured Product

71 Publications

Basic Information

Catalog Number:

66093-1-Ig

Size:

150ul, Concentration: 1000 µg/ml by Nanodrop and 973 µg/ml by Bradford method using BSA as the standard;

Source:

Mouse

Isotype:

IgG2b

Immunogen Catalog Number:

AG20524

GenBank Accession Number:

BC028223

GeneID (NCBI):

841

UNIPROT ID:

Q14790

Full Name:

caspase 8, apoptosis-related cysteine peptidase

Calculated MW:

538 aa, 62 kDa

Observed MW:

53-57 kDa, 32-45 kDa, 18 kDa

Purification Method:

Protein A purification

CloneNo.:

2B9H8

Recommended Dilutions:

WB 1:2000-1:10000

IP 0.5-4.0 µg for 1.0-3.0 mg of total protein lysate

IHC 1:100-1:400

IF 1:50-1:500

Applications

Tested Applications:

IF, IHC, IP, WB, ELISA

Cited Applications:

WB, IP, IHC, IF, ELISA, CoIP

Species Specificity:

human

Cited Species:

human, chicken, rat, sheep, mouse, monkey, pig

Note-IHC: suggested antigen retrieval with TE buffer pH 9.0; (*) Alternatively, antigen retrieval may be performed with citrate buffer pH 6.0

Positive Controls:

WB: Jurkat cells, HeLa cells, HepG2 cells, HEK-293 cells

IP: HepG2 cells,

IHC: human liver cancer tissue, human liver tissue

IF: HeLa cells,

Background Information

Caspase 8, also named as MCH5, MACH, FLICE, and CAP4, belongs to the peptidase C14A family. It may participate in the GZMB apoptotic pathways and functions as an upstream regulator in a-bisabolol-induced apoptosis. Caspase 8 catalyzes an essential intermediate step in the ubiquitination and proteasome-mediated degradation of IRF3 (PMID:21816816). It may control diabetic embryopathy-associated apoptosis via regulation of the Bid-stimulated mitochondrion/caspase-9 pathway (PMID:19194987). Caspase 8 is expressed as nine isoforms by alternative splicing with the molecular mass from 26 kDa to 62 kDa. This antibody can recognize pro- and cleaved-caspase 8.

Notable Publications

Author	Pubmed ID	Journal	Application
Guiying He	36129672	Hum Cell	IHC
Ni Zeng	31520740	Toxicol In Vitro	
Huan Liu	34491469	Med Oncol	WB

Storage

Storage:

Store at -20°C. Stable for one year after shipment.

Storage Buffer:

PBS with 0.02% sodium azide and 50% glycerol pH 7.3.

Aliquoting is unnecessary for -20°C storage

*** 20ul sizes contain 0.1% BSA

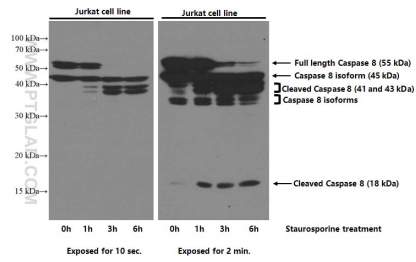
For technical support and original validation data for this product please contact:

T: 1 (888) 4PTGLAB (1-888-478-4522) (toll free in USA), or 1(312) 455-8498 (outside USA)

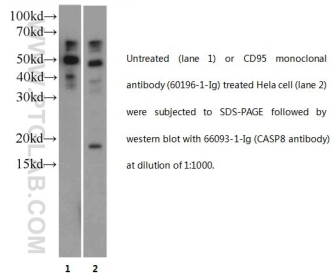
E: proteintech@ptglab.com
W: ptglab.com

This product is exclusively available under Proteintech Group brand and is not available to purchase from any other manufacturer.

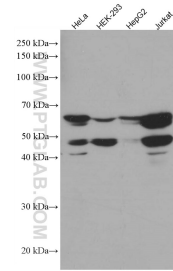
Selected Validation Data



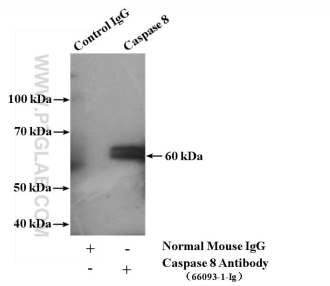
Untreated and Staurosporine treated Jurkat cells were subjected to SDS PAGE followed by western blot with 66093-1-Ig (Caspase 8 antibody) at dilution of 1:5000 incubated at room temperature for 1.5 hours.



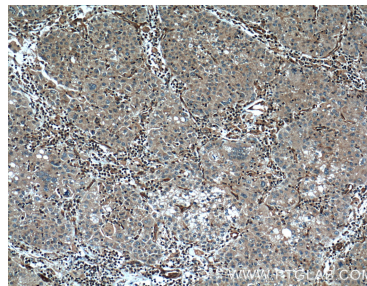
WB result of CASP8 with normal and apoptosis HeLa cell. P18 can be get in the apoptosis cell. 60kd,50kd and 45kd bands are some isoforms of precursor CASP8.



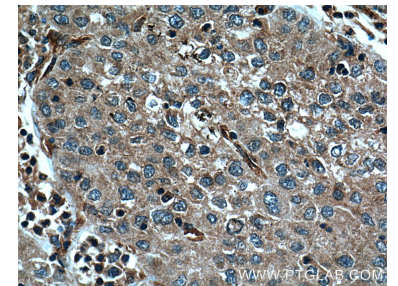
Various lysates were subjected to SDS PAGE followed by western blot with 66093-1-Ig (Caspase 8 antibody) at dilution of 1:10000 incubated at room temperature for 1.5 hours.



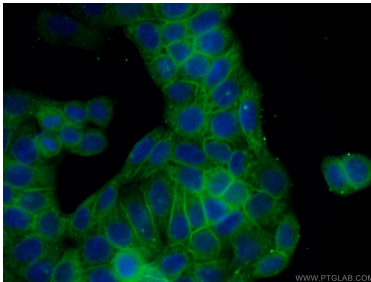
IP result of anti-Caspase 8/p43/p18 (IP:66093-1-Ig, 5ug; Detection:66093-1-Ig 1:500) with HepG2 cells lysate 2400ug.



Immunohistochemical analysis of paraffin-embedded human liver cancer tissue slide using 66093-1-Ig (Caspase 8 Antibody) at dilution of 1:200 (under 10x lens). Heat mediated antigen retrieval with Tris-EDTA buffer (pH 9.0).



Immunohistochemical analysis of paraffin-embedded human liver cancer tissue slide using 66093-1-Ig (Caspase 8 Antibody) at dilution of 1:200 (under 40x lens). Heat mediated antigen retrieval with Tris-EDTA buffer (pH 9.0).



Immunofluorescent analysis of (-20°C Ethanol) fixed HeLa cells using 66093-1-Ig(Caspase 8 antibody) at dilution of 1:100 and Alexa Fluor 488-conjugated AffiniPure Goat Anti-Mouse IgG(H+L).