

For Research Use Only

# Lamin B1 Monoclonal antibody

Catalog Number: 66095-1-Ig

Featured Product

404 Publications



## Basic Information

### Catalog Number:

66095-1-Ig

### Size:

150ul, Concentration: 1000 ug/ml by Nanodrop;

### Source:

Mouse

### Isotype:

IgG1

### Immunogen Catalog Number:

AG20522

### GenBank Accession Number:

BC012295

### GeneID (NCBI):

4001

### ENSEMBL Gene ID:

ENSG00000113368

### UNIPROT ID:

P20700

### Full Name:

lamin B1

### Calculated MW:

66 kDa

### Observed MW:

66-70 kDa

### Purification Method:

Protein A purification

### CloneNo.:

3C10G12

### Recommended Dilutions:

WB 1:20000-1:100000

IP 0.5-4.0 ug for 1.0-3.0 mg of total protein lysate

IHC 1:500-1:2000

IF-P 1:200-1:800

IF/ICC 1:250-1:1000

## Applications

### Tested Applications:

WB, IHC, IF/ICC, IF-P, FC (Intra), IP, ELISA

### Cited Applications:

WB, IHC, IF, IP, CoIP

### Species Specificity:

human, mouse, rat

### Cited Species:

human, mouse, rat, rabbit, chicken, zebrafish, bovine, hamster

**Note-IHC: suggested antigen retrieval with TE buffer pH 9.0; (\*) Alternatively, antigen retrieval may be performed with citrate buffer pH 6.0**

### Positive Controls:

**WB:** NCI-H1299 cells, multi-cells/tissue, HeLa cells, HepG2 cells, HEK-293 cells, Jurkat cells, K-562 cells, PC-12 cells, NIH/3T3 cells, 4T1 cells

**IP:** HeLa cells,

**IHC:** human pancreas cancer tissue, human breast cancer tissue

**IF-P:** mouse eye tissue,

**IF/ICC:** HepG2 cells, HeLa cells

## Background Information

Lamins are components of the nuclear lamina, a fibrous layer on the nucleoplasmic side of the inner nuclear membrane, which is thought to provide a framework for the nuclear envelope and may also interact with chromatin. The nuclear lamina consists of a two-dimensional matrix of proteins located next to the inner nuclear membrane. The lamin family of proteins make up the matrix and are highly conserved in evolution. During mitosis, the lamina matrix is reversibly disassembled as the lamin proteins are phosphorylated. Vertebrate lamins consist of two types, A and B. This gene encodes one of the two B type proteins, B1. This protein is not suitable for samples where the nuclear envelope has been removed.

## Notable Publications

Author	Pubmed ID	Journal	Application
Juan M Barajas	34599880	Am J Pathol	WB
Xiangmin Zhang	36069548	J Virol	WB
Chie Nakashima	32998265	Int J Mol Sci	WB

## Storage

### Storage:

Store at -20°C. Stable for one year after shipment.

### Storage Buffer:

PBS with 0.02% sodium azide and 50% glycerol, pH7.3

Aliquoting is unnecessary for -20°C storage

\*\*\* 20ul sizes contain 0.1% BSA

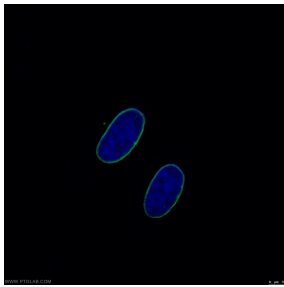
For technical support and original validation data for this product please contact:

T: 1 (888) 4PTGLAB (1-888-478-4522) (toll free in USA), or 1(312) 455-8498 (outside USA)

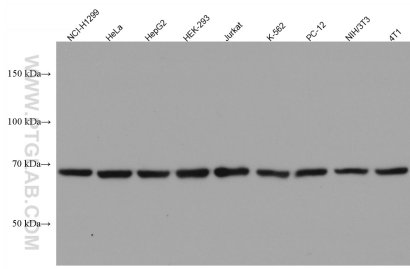
E: [proteintech@ptglab.com](mailto:proteintech@ptglab.com)  
W: [ptglab.com](http://ptglab.com)

**This product is exclusively available under Proteintech Group brand and is not available to purchase from any other manufacturer.**

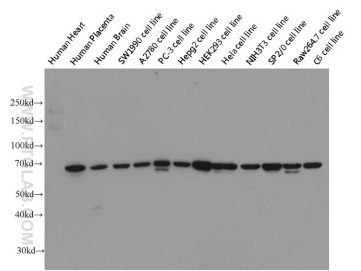
Selected Validation Data



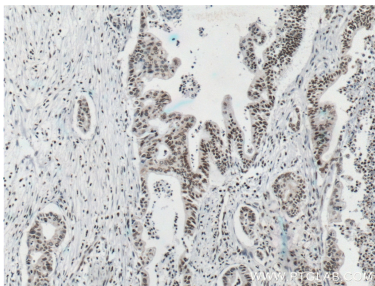
Immunofluorescent analysis of (-20°C Ethanol) fixed HepG2 cells using 66095-1-Ig (Lamin B1 antibody) at dilution of 1:500 and CoraLite488-Conjugated Goat Anti-Mouse IgG(H+L).



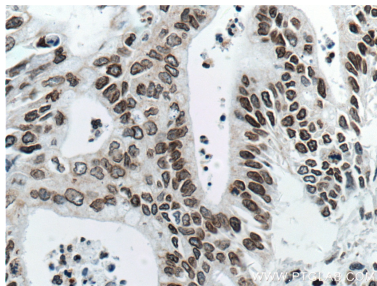
Various lysates were subjected to SDS PAGE followed by western blot with 66095-1-Ig (Lamin B1 antibody) at dilution of 1:100000 incubated at room temperature for 1.5 hours.



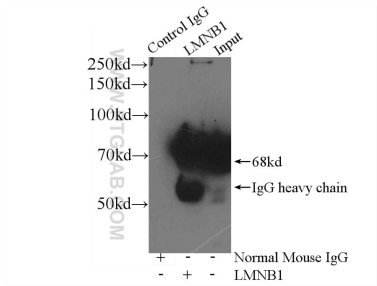
Western blot on multiple cells/tissues with anti-LMNB1 (66095-1-Ig) at dilution 1:20000.



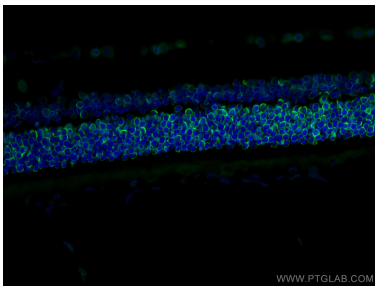
Immunohistochemical analysis of paraffin-embedded human pancreas cancer tissue slide using 66095-1-Ig (Lamin B1 antibody) at dilution of 1:1000 (under 10x lens. Heat mediated antigen retrieval with Tris-EDTA buffer (pH 9.0).



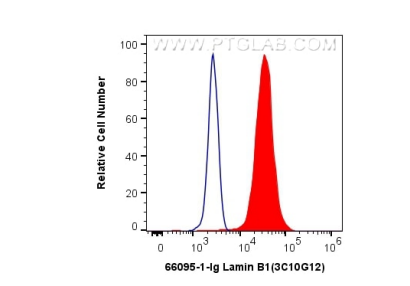
Immunohistochemical analysis of paraffin-embedded human pancreas cancer tissue slide using 66095-1-Ig (Lamin B1 antibody) at dilution of 1:1000 (under 40x lens. Heat mediated antigen retrieval with Tris-EDTA buffer (pH 9.0).



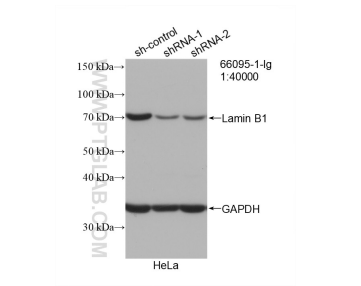
IP result of anti-Lamin B1 (IP:66095-1-Ig, 4ug; Detection:66095-1-Ig 1:20000) with HeLa cells lysate 3560ug.



Immunofluorescent analysis of (4% PFA) fixed mouse eye tissue using Lamin B1 antibody (66095-1-Ig, Clone: 3C10G12) at dilution of 1:400 and CoraLite®488-Conjugated Goat Anti-Mouse IgG(H+L).



1X10<sup>6</sup> HeLa cells were intracellularly stained with 0.4 ug Anti-Human Lamin B1 (66095-1-Ig, Clone:3C10G12) and CoraLite®488-Conjugated Goat Anti-Mouse IgG(H+L) at dilution 1:1000 (red), or 0.4 ug Mouse IgG1 Isotype Control (MOPC-21) (65124-1-Ig, Clone: MOPC-21) (blue). Cells were fixed and permeabilized with Transcription Factor Staining Buffer Kit (PF00011).



WB result of Lamin B1 antibody (66095-1-Ig; 1:40000; incubated at room temperature for 1.5 hours) with sh-Control and sh-Lamin B1 transfected HeLa cells.